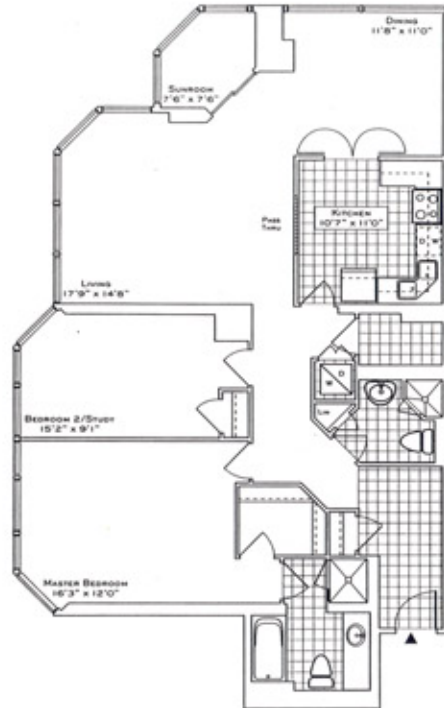
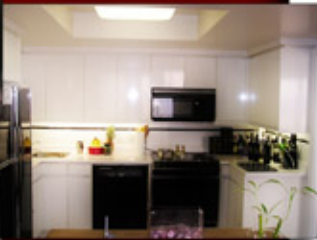




TORONTOSBESTCONDOS.COM

# PALACE PLACE

Floor Plan - 1,395 sq. ft.



## The Park Point

**SUITE 09**  
1,388/1,387 sq. ft.  
If Looking @ Suite 09/09 Only, Ask  
1,388/1,395 sq. ft.  
If Looking @ Suite 09/09 Only, Ask

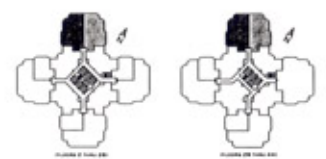
See our home at Palace Place is about a million miles from the ordinary, offering a selection of choices in a landmark building. From your parking to the convenient location of the building, this like the manager of it's own kind will take you on every mile.

The special price, with our on-site to a world-class designed "The building" "Palace Place" offers an excellent living space with fitness and party facilities with 300' view of the city and lake that are truly breathtaking.

Additionally, there is a great on-site service to and from downtown, a fully equipped business center, and stay off the busy and for average urban, great value.

Living at Palace Place, in your prime grounds overlooking Lake Ontario is an experience that you never will want to be forgotten. Stop.

**PALACE PLACE**



The information that has been written herein has been obtained from sources that have been deemed reliable. There has been no reason to doubt its accuracy but regrettably it cannot be guaranteed. Royal LePage Real Estate Services Ltd., Broker. © Luke Dalinda.



TORONTOSBESTCONDOS.COM

# PALACE PLACE

1 Palace Pier Court, Suite 3710

## WELCOME TO PALACE PLACE!

Breathtaking is the word that best describes Palace Place, which is the most prestigious and luxurious waterfront condominium residence in Canada. Suite 3710 is a magnificent condominium residence, with approximately 1,395 square feet of living space and a brilliant view of High Park, Grenadier Pond, the northern city skyline and the Humber Bay. From the moment you step in, you will appreciate the uncompromising attention to detail in every room. Natural light floods the whole unit, which has floor to ceiling windows throughout. This is an ideal home for professional couples, who want the convenient and carefree lifestyle that a luxury condominium offers.

**PALACE PLACE** features every conceivable amenity, including valet parking, security system, shuttle bus service and a world-class health club with squash, racquetball, sauna, indoor pool, recreation room, and a rooftop lounge. It is conveniently located, with easy access to major arteries, particularly Lakeshore Boulevard, the Gardiner Expressway, and the Queen Elizabeth Way. It is approximately 5 minutes drive to downtown Toronto and 15 minutes to the airport.

### **For Sale**

Price: \$349,900

Maintenance: \$843.04

Taxes: \$3,445.62 (2005)

2 Parking spots: B155, C56

1 Locker: C56

### Contact:

**DAIVA DALINDA**

Associate Broker

**ROYAL LEPAGE**

Residential Real Estate Services

416.236.1871

[ddalinda@TorontosBestCondos.com](mailto:ddalinda@TorontosBestCondos.com)



The information that has been written herein has been obtained from sources that have been deemed reliable. There has been no reason to doubt its accuracy but regretfully it cannot be guaranteed. Royal LePage Real Estate Services Ltd., Broker. © Luke Dalinda.