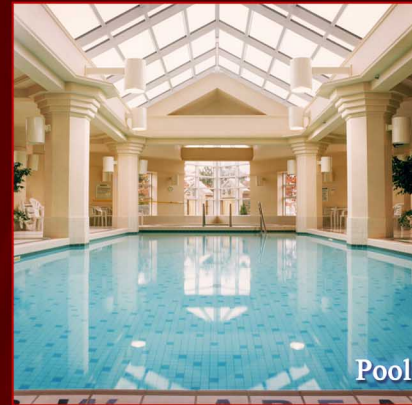


WELCOME TO PALACE PLACE
1 PALACE PIER COURT
 SUITE # 1205



Palace Place features a modern mix of Oriental and Louis XV inspired furnishings and accessories.



Taking as its inspiration the legendary waterfront estates of the Gatsby era, Palace Place represents a chic and sophisticated view of condominium living, one without precedent in Toronto.

PALACE PLACE features every conceivable amenity, including valet parking, a security system, with a 24-hour concierge, guards, and video surveillance, signature services, guest suites, shuttle bus service, and a world-class health club, with a squash court, a racquetball court, a sauna room, an indoor saltwater pool, a recreation room, and a rooftop lounge. It is conveniently located, with easy access to major arteries, particularly Lakeshore Boulevard, the Gardiner Expressway, and the Queen Elizabeth Way. It is approximately a 5-minute drive to downtown Toronto and 15-minutes to the airport.



FOR SALE AT: \$558,000

MAINTENANCE: \$1,010.02

Learn more about Palace Place by ordering, **PALACE PLACE: THE BOOK**
dalinda.net/PalacePlaceBook

SPECIAL FEATURES

Watch Palace Place on
YouTube
www.YouTube.com/PalacePlaceToronto

- Suite 1205 features beautiful hardwood floors (except master bedroom), crown mouldings, and a spacious kitchen, with upgraded cabinetry.
- Appliances include a GE Profile fridge, a Miele dishwasher, a stove, a microwave, and a full-size stacked washer and dryer.
- One parking spot and one locker are included.

WELCOME TO PALACE PLACE
1 PALACE PIER COURT
 SUITE # 1205



ON A CLEAR DAY, YOU CAN SEE FOREVER!

Breathtaking is the word that best describes Palace Place, which is the most prestigious, luxurious, and best managed waterfront condominium residence in Canada. Suite 1205 is a highly sought-after, immaculate condominium residence, with approximately 1,228 square feet of living space and enchanting views of the lake.

EXCEEDING EXPECTATIONS

Luke Dalinda, Sales Representative
 Royal LePage Real Estate Services Ltd., Brokerage
 W: 416 236 1871 C: 416 725 7170
ldalinda@Dalinda.net

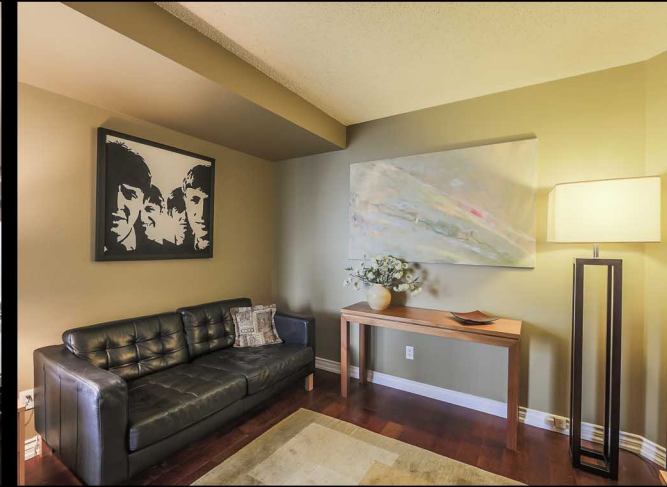
EXCEEDING EXPECTATIONS

Luke Dalinda, Sales Representative
 Royal LePage Real Estate Services Ltd., Brokerage
 W: 416 236 1871 C: 416 725 7170
ldalinda@Dalinda.net

The information that has been written herein has been obtained from sources that have been deemed reliable. There has been no reason to doubt its accuracy, but, regretfully, it cannot be guaranteed. Royal LePage Real Estate Services Ltd., Brokerage. © DalindaTeam.com.



From the moment you step in, you will appreciate the uncompromising attention to detail in every room. Natural light floods the whole unit, which has floor to ceiling windows throughout. This is an ideal home for professional couples, who want the convenient and carefree lifestyle that a luxury condominium offers.



FLOOR PLAN

1 PALACE PIER COURT

SUITE 1205

The Harbour Point

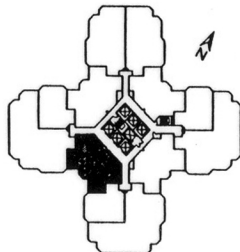
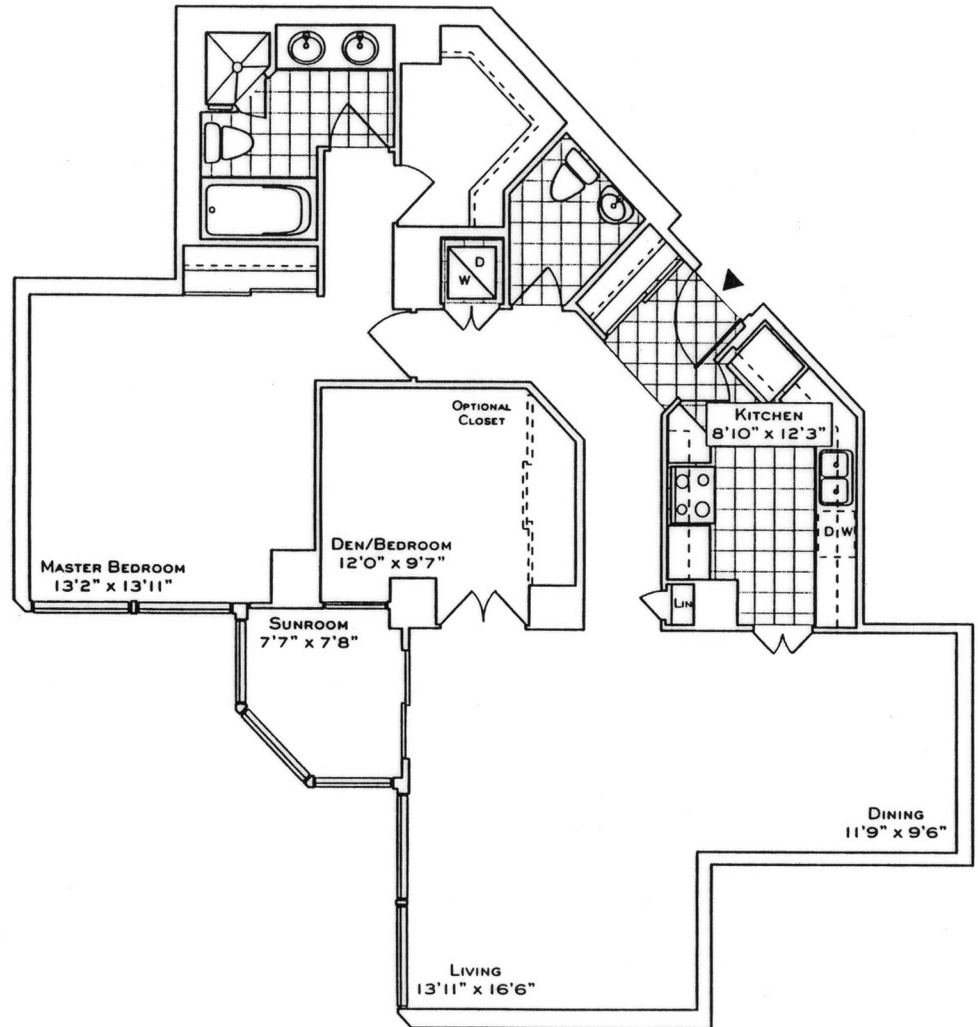
SUITE 05
1228 SQ. FT.
 (FLOORS 2 THRU 28)

Your new home at Palace Place is about a million miles from the ordinary, offering a sybaritic lifestyle in a landmark building. From valet parking to the unsurpassed service of the concierge who, like the manager of a 5-star hotel, will cater to your every whim.

Play squash, swim, work-out or relax in a soothing whirlpool. The rooftop 'Lakeshore Club' offers an exclusive dining room, video theatre, and party facilities with 360° views of the city and lake that are truly breathtaking.

Additionally, there is a private shuttle service to and from downtown, a fully-equipped business centre, tuck shop off the lobby and, for overnight visitors, guest suites.

Living at Palace Place, on your private peninsula overlooking Lake Ontario, is an experience that can never, will never, be duplicated. Enjoy.



(FLOORS 2 THRU 28)
Plan, specifications and dimensions shown are approximate and are for illustrative purposes only and may not comply with the zoning code or other applicable laws. Measurements may be verified by inspecting the site as well as the construction plans prepared on site. Actual results may vary from the stated floor area in accordance with OSHTY guidelines. Floor slabs are not to scale.



Luke Dalinda, Sales Representative
 Royal LePage Real Estate Services Ltd., Brokerage
 416 236 1871 | ldalinda@Dalinda.net

