

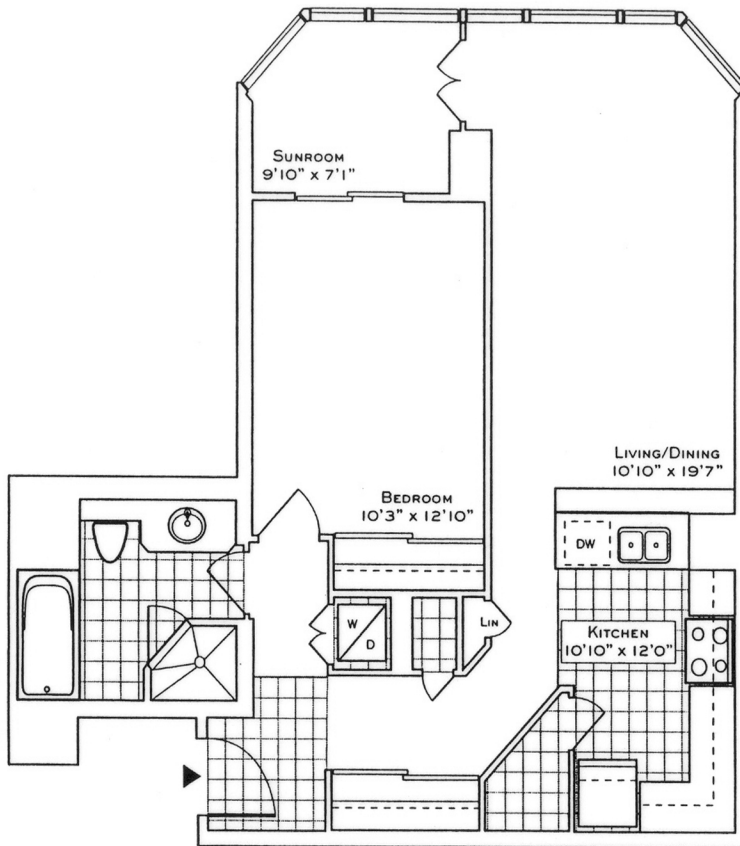
# FLOOR PLAN

# 1 PALACE PIER COURT

## SUITE 1912

The  
River  
Point

SUITE 12  
813 SQ. FT.  
(FLOORS 2 THRU 28)



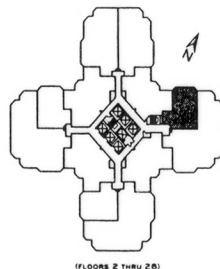
Your new home at Palace Place is about a million miles from the ordinary, offering a sybaritic lifestyle in a landmark building. From valet parking to the unsurpassed service of the concierge who, like the manager of a 5-star hotel, will cater to your every whim.

Play squash, swim, work-out or relax in a soothing whirlpool. The rooftop "Lakeshore Club" offers an exclusive dining room, video theatre, and party facilities with 360° views of the city and lake that are truly breathtaking.

Additionally, there is a private shuttle service to and from downtown, a fully equipped business centre, tuck shop off the lobby and, for overnight visitors, guest suites.

Living at Palace Place, on your private peninsula overlooking Lake Ontario, is an experience that can never, will never, be duplicated. Enjoy.

 PALACE PLACE



Plans, specifications and dimensions shown are approximate and are for illustrative purposes only and may not coincide with the existing state, a measurement. Suite area may be verified by measuring the suite in real time. The construction phase required on this actual model floor plan may vary from the stated floor area in accordance with OCEAN's policies. Plans shown are not to scale.

**ROYAL LEPAGE**  
Royal LePage Real Estate Services Limited, Brokerage

Luke Dalinda, Sales Representative  
Royal LePage Real Estate Services Ltd., Brokerage  
416 236 1871 [ldalinda@Dalinda.net](mailto:ldalinda@Dalinda.net)



The information that has been written herein has been obtained from sources that have been deemed reliable. There has been no reason to doubt its accuracy, but, regretfully, it cannot be guaranteed. Royal LePage Real Estate Services Ltd., Brokerage. © DalindaTeam.com.