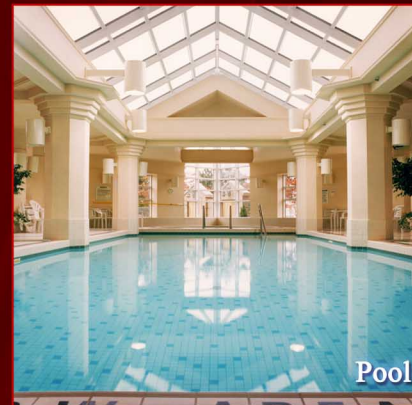


WELCOME TO PALACE PLACE
1 PALACE PIER COURT
SUITE # 2802



Palace Place features a modern mix of Oriental and Louis XV inspired furnishings and accessories.



Pool

Taking as its inspiration the legendary waterfront estates of the Gatsby era, Palace Place represents a chic and sophisticated view of condominium living, one without precedent in Toronto.

PALACE PLACE features every conceivable amenity, including valet parking, a security system, with a 24-hour concierge, guards, and video surveillance, signature services, guest suites, shuttle bus service, and a world-class health club, with a squash court, a racquetball court, a sauna room, an indoor pool, a recreation room, and a rooftop lounge. It is conveniently located, with easy access to major arteries, particularly Lakeshore Boulevard, the Gardiner Expressway, and the Queen Elizabeth Way. It is approximately a 5-minute drive to downtown Toronto and 15-minutes to the airport.



View

FOR SALE AT: \$579,000

MAINTENANCE: \$1,007.55



Learn more about Palace Place by ordering,
PALACE PLACE: THE BOOK
dalinda.net/PalacePlaceBook

Watch Palace Place on
You Tube
[www.YouTube.com/
PalacePlaceToronto](http://www.YouTube.com/PalacePlaceToronto)

SPECIAL FEATURES

- Suite 2802 features Mirage oak hardwood floors, granite counters, a California closet in the master, and Hunter Douglas blinds throughout.
- Appliances include Kitchen Aid stove, LG fridge, LG microwave, Bosch dishwasher, and a Bosch washer/dryer.
- Two side-by-side parking spots and one locker are included.



EXCEEDING EXPECTATIONS

Luke Dalinda, Sales Representative
Royal LePage Real Estate Services Ltd., Brokerage
W: 416 236 1871 C: 416 725 7170
ldalinda@Dalinda.net



The information that has been written herein has been obtained from sources that have been deemed reliable. There has been no reason to doubt its accuracy, but, regretfully, it cannot be guaranteed. Royal LePage Real Estate Services Ltd., Brokerage. © DalindaTeam.com.

WELCOME TO PALACE PLACE
1 PALACE PIER COURT
SUITE # 2802



ON A CLEAR DAY, YOU CAN SEE FOREVER!

Breathtaking is the word that best describes Palace Place, which is the most prestigious, luxurious, and best managed waterfront condominium residence in Canada. Suite 2802 is a stunning, immaculate condominium residence, with approximately 1,204 square feet of living space and the most sought after views of the Toronto skyline and Lake Ontario.



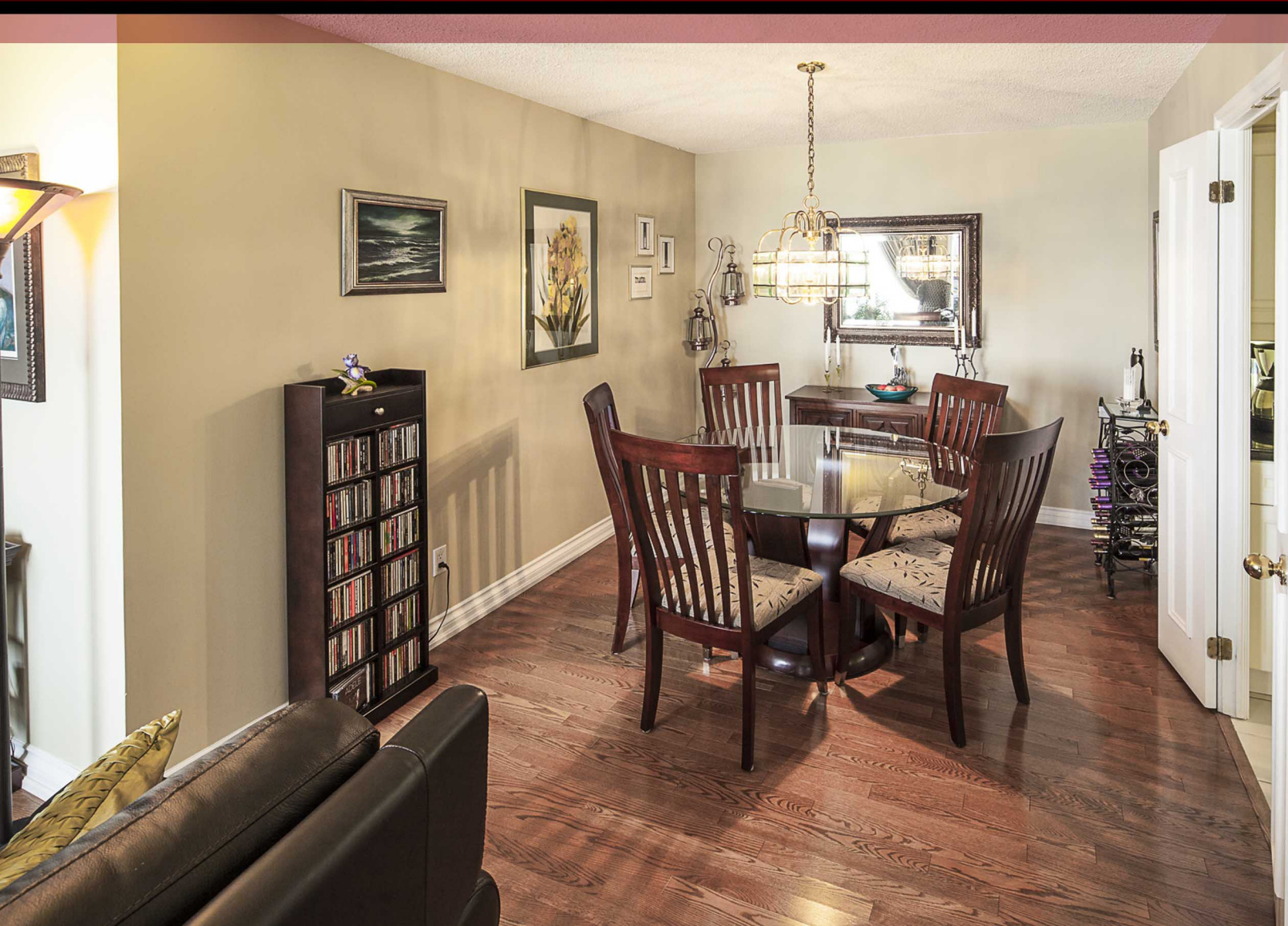
EXCEEDING EXPECTATIONS

Luke Dalinda, Sales Representative
Royal LePage Real Estate Services Ltd., Brokerage
W: 416 236 1871 C: 416 725 7170
ldalinda@Dalinda.net





From the moment you step in, you will appreciate the uncompromising attention to detail in every room. Natural light floods the whole unit, which has floor to ceiling windows throughout. This is an ideal home for professional couples, who want the convenient and carefree lifestyle that a luxury condominium offers.



FLOOR PLAN

1 PALACE PIER COURT SUITE 2802

The Bridge Point

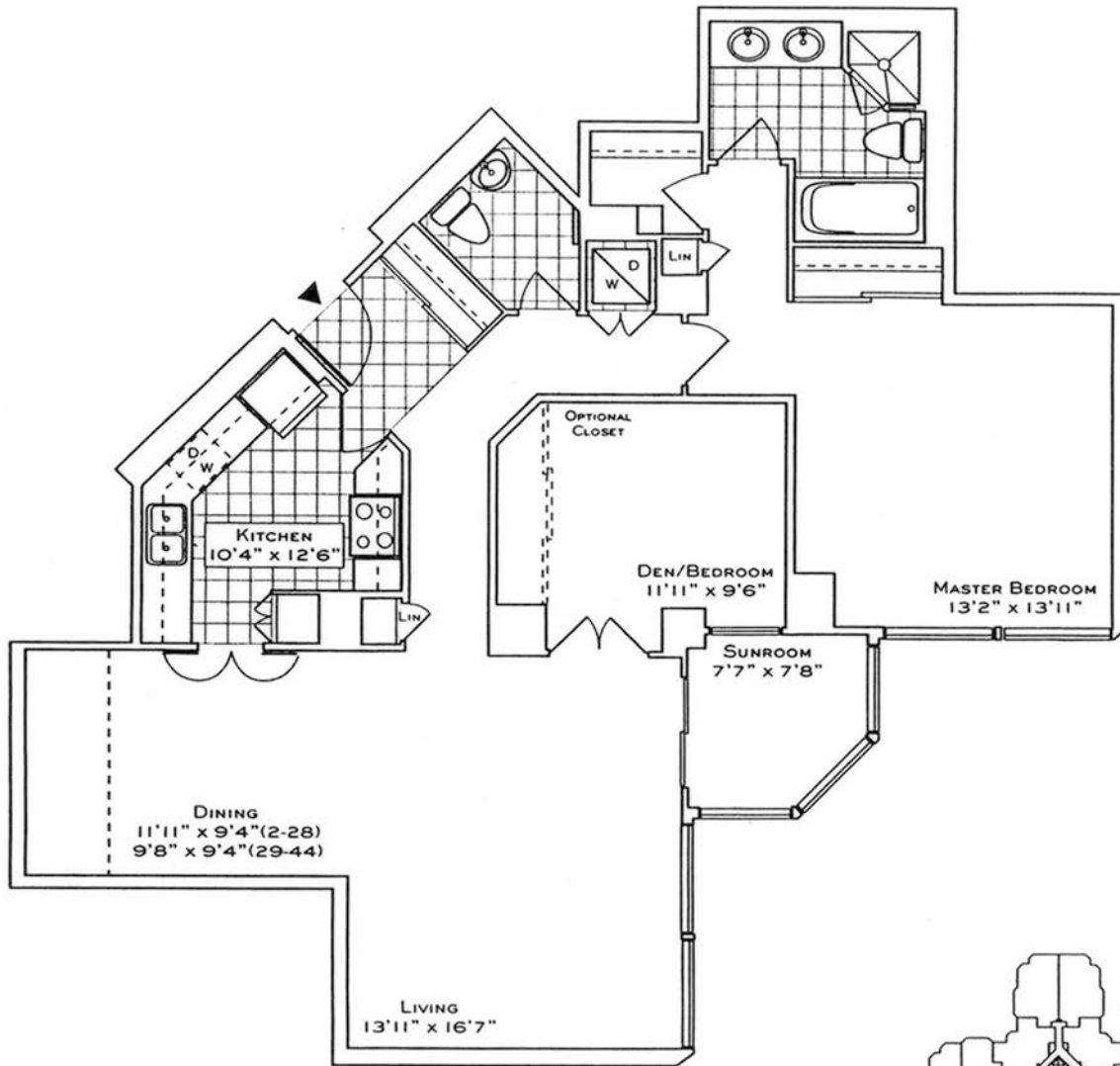
SUITE 02
1204 SQ. FT.
(FLOORS 2 THRU 28)
1186 SQ. FT.
(FLOORS 29 THRU 44)

Your new home at Palace Place is about a million miles from the ordinary, offering a sybaritic lifestyle in a landmark building. From valet parking to the unsurpassed service of the concierge who, like the manager of a 5-star hotel, will cater to your every whim.

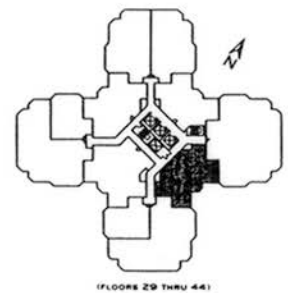
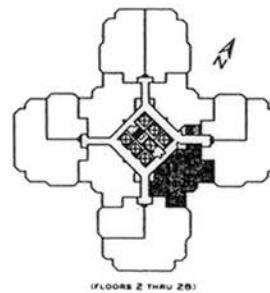
Play squash, swim, work-out or relax in a soothing whirlpool. The rooftop "Lakeshore Club" offers an exclusive dining room, video theatre, and party facilities with 360° views of the city and lake that are truly breathtaking.

Additionally, there is a private shuttle service to and from downtown, a fully equipped business centre, tuck shop off the lobby and, for overnight visitors, guest suites.

Living at Palace Place, on your private peninsula overlooking Lake Ontario, is an experience that can never, will never, be duplicated. Enjoy.



 PALACE PLACE



Please, specifications and dimensions shown are approximations and are for illustrative purposes only and may not coincide with the actual floor plan. Actual floor plan may be subject to change without notice. Actual floor plan may vary from the stated floor area in accordance with OSHA 7 guidelines. Please, do not rely on this.

ROYAL LePAGE
Royal LePage Real Estate Services Limited, Brokerage

Daiva Dalinda, Broker, and Luke Dalinda, Sales Representative
Royal LePage Real Estate Services Ltd., Brokerage
416 236 1871 ldalinda@Dalinda.net



The information that has been written herein has been obtained from sources that have been deemed reliable. There has been no reason to doubt its accuracy, but, regretfully, it cannot be guaranteed. Royal LePage Real Estate Services Ltd., Brokerage. © DalindaTeam.com.