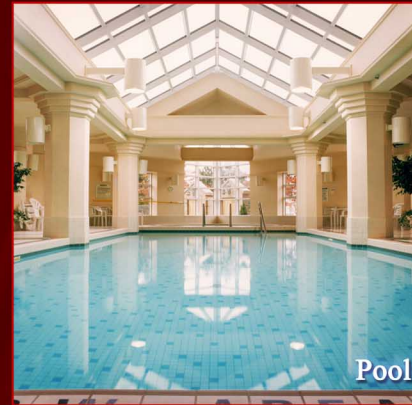


WELCOME TO PALACE PLACE
1 PALACE PIER COURT
 SUITE # 406



Palace Place features a modern mix of Oriental and Louis XV inspired furnishings and accessories.



Taking as its inspiration the legendary waterfront estates of the Gatsby era, Palace Place represents a chic and sophisticated view of condominium living, one without precedent in Toronto.

PALACE PLACE features every conceivable amenity, including valet parking, a security system, with a 24-hour concierge, guards, and video surveillance, signature services, guest suites, shuttle bus service, and a world-class health club, with a squash court, a racquetball court, a sauna room, an indoor pool, a recreation room, and a rooftop lounge. It is conveniently located, with easy access to major arteries, particularly Lakeshore Boulevard, the Gardiner Expressway, and the Queen Elizabeth Way. It is approximately a 5-minute drive to downtown Toronto and 15-minutes to the airport.



FOR SALE AT: \$815,000

MAINTENANCE: \$1,583.14



Learn more about Palace Place by ordering, **PALACE PLACE: THE BOOK**
dalinda.net/PalacePlaceBook

Watch Palace Place on



www.YouTube.com/PalacePlaceToronto

SPECIAL FEATURES

- Suite 406 features a state-of-the-art kitchen, with stunning granite counters, faux finish walls, Hunter Douglas shades in the master, UV filter lights in all 3 CAC units, and custom metal shelving in all the closets and laundry room.
- Stainless steel appliances include a Sub Zero fridge, Miele stove, Miele cooktop, Miele exhaust hood, Miele dishwasher, and a full size washer and dryer.
- One parking spot is included. An additional parking spot and a locker can be purchased for \$32,000.



EXCEEDING EXPECTATIONS

Luke Dalinda, Sales Representative
 Royal LePage Real Estate Services Ltd., Brokerage
 W: 416 236 1871 C: 416 725 7170
ldalinda@Dalinda.net



The information that has been written herein has been obtained from sources that have been deemed reliable. There has been no reason to doubt its accuracy, but, regretfully, it cannot be guaranteed. Royal LePage Real Estate Services Ltd., Brokerage. © DalindaTeam.com.

WELCOME TO PALACE PLACE
1 PALACE PIER COURT
 SUITE # 406



Breathtaking is the word that best describes Palace Place, which is the most prestigious, luxurious, and best managed waterfront condominium residence in Canada. Suite 406 is a magnificent condominium residence, with approximately 1,985 square feet of living space and enchanting views of Lake Ontario and the lush surroundings. Suite 406 has been completely renovated for the discerning buyer, who appreciates quality workmanship and sophisticated styling.



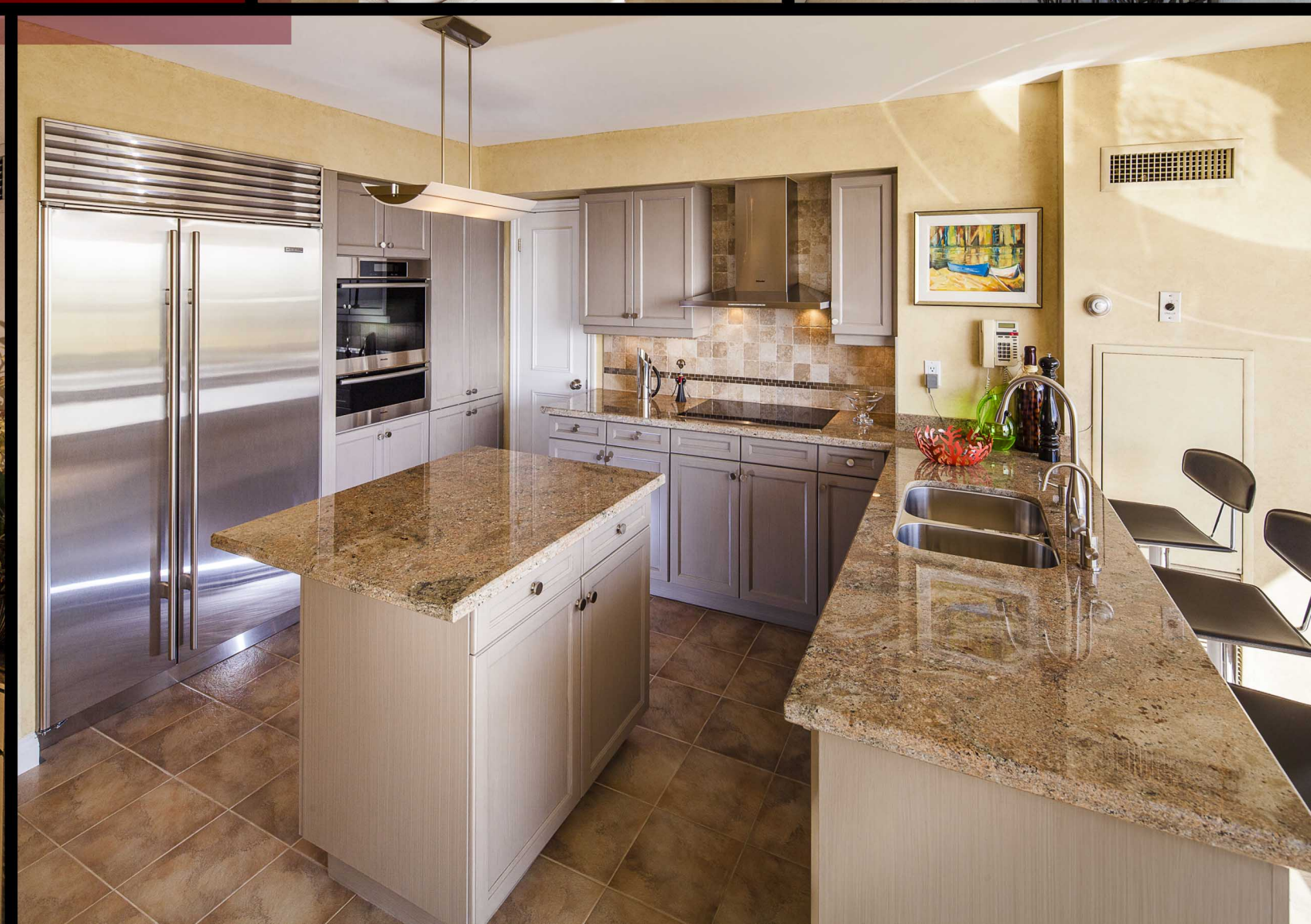
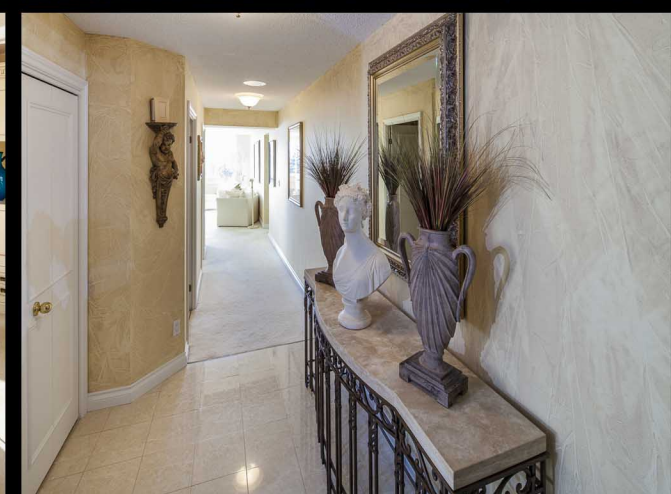
EXCEEDING EXPECTATIONS

Luke Dalinda, Sales Representative
 Royal LePage Real Estate Services Ltd., Brokerage
 W: 416 236 1871 C: 416 725 7170
ldalinda@Dalinda.net





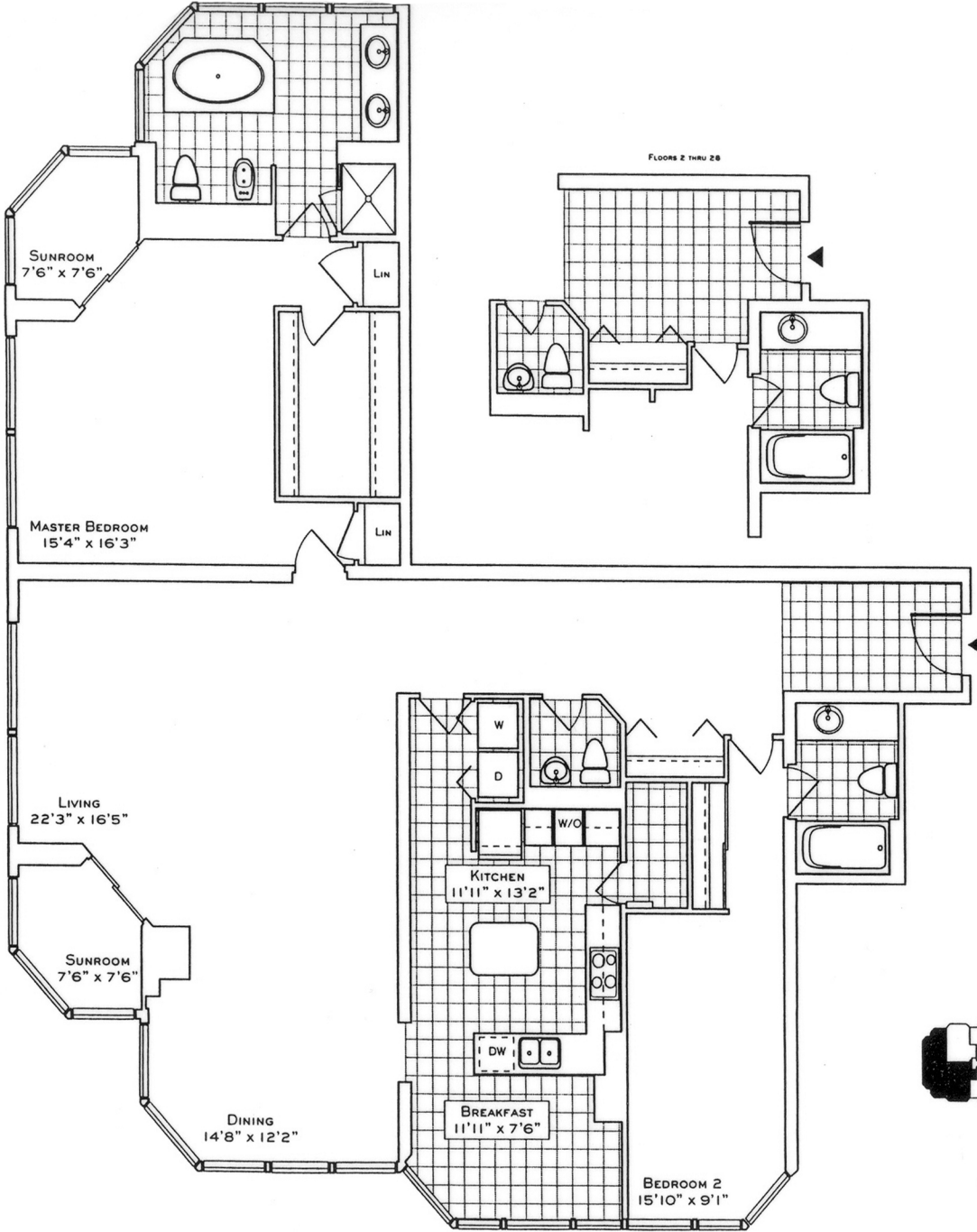
From the moment you step in, you will appreciate the uncompromising attention to detail in every room. Natural light floods the whole unit, which has floor to ceiling windows throughout. This is an ideal home for professional couples, who want the convenient and carefree lifestyle that a luxury condominium offers.



FLOOR PLAN

1 PALACE PIER COURT

SUITE 406



The Water Point

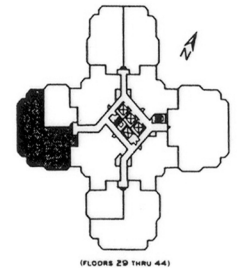
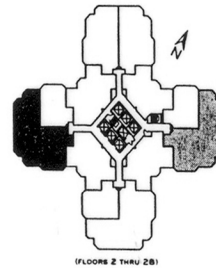
SUITE 06
 1985/2028 SQ. FT.
 (FLOORS 2 THRU 28/29 THRU 44)
SUITE 01
 (REVERSE PLAN)
 1985 SQ. FT.
 (FLOORS 2 THRU 28)

Your new home at Palace Place is about a million miles from the ordinary, offering a sybaritic lifestyle in a landmark building. From valet parking to the unsurpassed service of the concierge who, like the manager of a 5-star hotel, will cater to your every whim.

Play squash, swim, work-out or relax in a soothing whirlpool. The rooftop 'Lakeshore Club' offers an exclusive dining room, video theatre, and party facilities with 360° views of the city and lake that are truly breathtaking.

Additionally, there is a private shuttle service to and from downtown, a fully equipped business centre, tuck shop off the lobby and, for overnight visitors, guest suites.

Living at Palace Place, on your private peninsula overlooking Lake Ontario, is an experience that can never, will never, be duplicated. Enjoy.



Plan specifications and dimensions shown are approximations and are for illustrative purposes only and may not coincide with the existing site, or conditions. Final dimensions may be modified by improving the site as well as the construction plan registered on file. Actual usable floor space may vary from the stated floor area in accordance with OHSNY practices. These drawings are not to scale.



Luke Dalinda, Sales Representative
 Royal LePage Real Estate Services Ltd., Brokerage
 416 236 1871 | ldalinda@Dalinda.net

