

FLOOR PLAN

1 PALACE PIER COURT SUITE 4003

The
Lake
Point

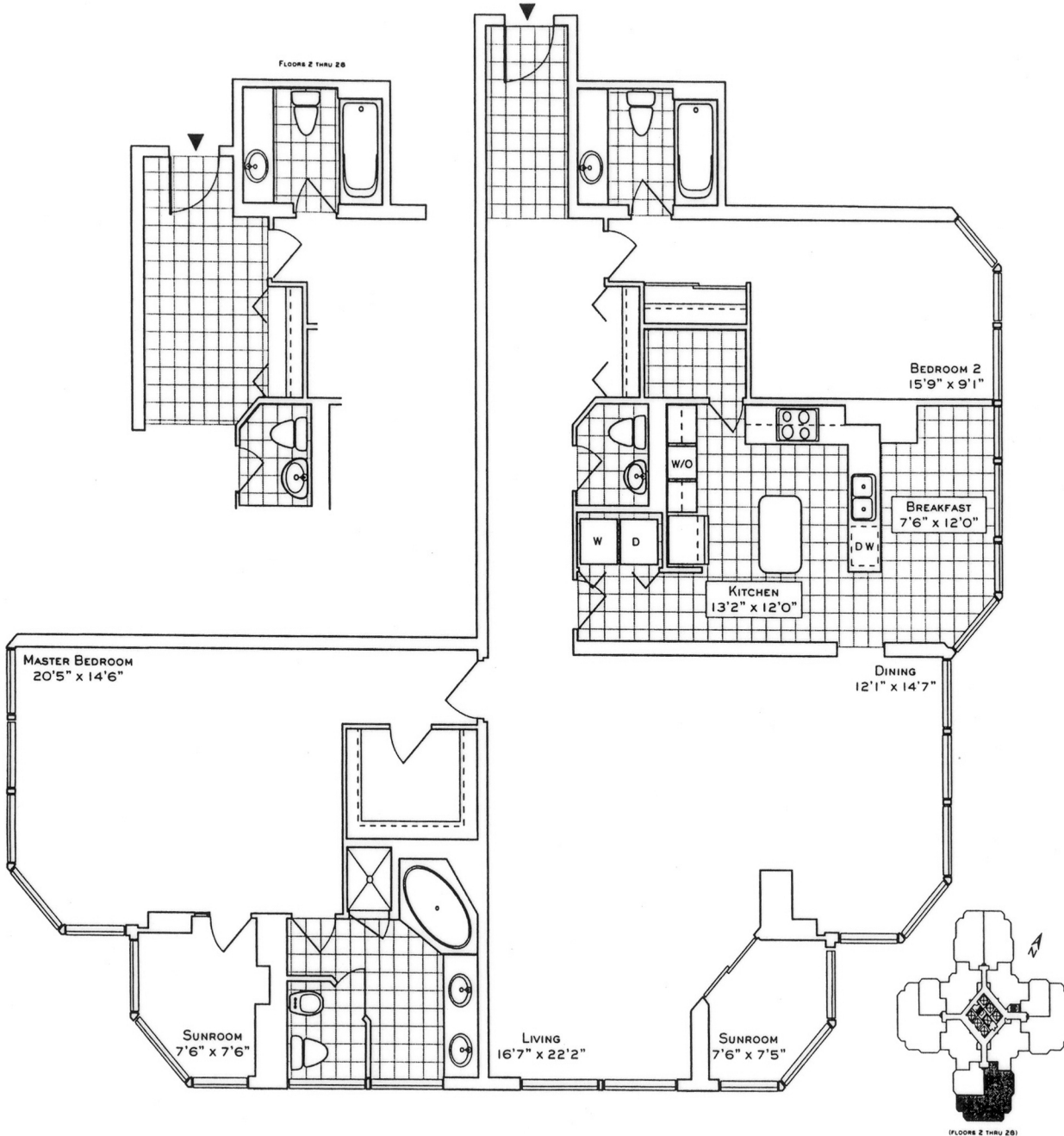
SUITE 03
1985 SQ. FT.
(FLOORS 2 THRU 28)
2028 SQ. FT.
(FLOORS 29 THRU 44)

Your new home at Palace Place is about a million miles from the ordinary, offering a symbiotic lifestyle in a landmark building. From valet parking to the unsurpassed service of the concierge who like the manager of a 5-star hotel, will cater to your every whim.

Play squash, swim, work out or relax in a soothing whirlpool. The rooftop "Lakeshore Club" offers an exclusive dining room, video theatre, and party facilities with 360° views of the city and lake that are truly breathtaking.

Additionally, there is a private shuttle service to and from downtown, a fully equipped business centre, tuck shop off the lobby and, for overnight visitors, guest suites.

Living at Palace Place, on your private peninsula overlooking Lake Ontario, is an experience that can never, will never, be duplicated. Enjoy.



 PALACE PLACE


ROYAL LEPAGE
Royal LePage Real Estate Services Limited, Brokerage

Luke Dalinda, Sales Representative
Royal LePage Real Estate Services Ltd., Brokerage
416 236 1871 lldalinda@Dalinda.net



The information that has been written herein has been obtained from sources that have been deemed reliable. There has been no reason to doubt its accuracy, but, regrettably, it cannot be guaranteed. Royal LePage Real Estate Services Ltd., Brokerage. © DalindaTeam.com.

Prepared by LUKE DALINDA, Salesperson
ROYAL LEPAGE REAL ESTATE SERVICES LTD., BROKERAGE
 3031 Bloor St. W., Toronto W07, ON M8X1C5
 416-236-1871
 12/19/2012 10:33:15 PM

	1 Palace Pier Crt 4003		\$4,500
	Toronto, Ontario M8V3W9 Toronto W06 Mimico		
	SPIS: N 119-11-S		
	Condo Apt Apartment Dir/Cross St: Lake Shore/ Palace Pier Corp#: MTCC/1053 Prop Mgmt: Brookfield, 416-503-1200		
		Locker#:	Rooms: 5+2
		Level: 39	Bedrooms: 2+1
		Unit#: 03	Washrooms: 3
			1x2, 1x4, 1x6
MLS#: W2526984			
DOM: 1			
Possession: Immediate			
PIN#:			
Contract Date: 12/18/2012			
Kitchens: 1	Pets Perm: Restrict	Balcony: None	
Fam Rm: N	Locker: None		
Basement: None	Maint:	Exterior: Alum Siding	
Fireplace/Stv: N	A/C: Central Air		
Heat: Electric	UFFI:	Gar/Park Sp: Undergrnd/1	
Forced Air	Central Vac:	Park/Drive: Undergrnd	
Apx Age:	Elevator:	Park Type: Owned/	
Apx Sqft: 2000-2249	Retirement:	Park Spcs: 1	
Exposure: S	All Incl: Y Water Incl: Y	Park \$/Mo:	
Spec Desig: Unknown	Heat Incl: Y Hydro Incl: Y	Prk Lgl Dsc:	
Phys Hdcap-Equip:	Cable TV Incl: Y CAC Incl: Y		
	Bldg Insur Incl: Y Prkg Incl: Y	Bldg Amen: Concierge	
	Comm Elem Inc: Y	Exercise Room	
	Priv. Entrance: N	Guest Suites	
	Furnished: N	Indoor Pool	
	Laundry Acc: Ensuite	Party/Meeting Room	
	Laundry Lev:	Security Guard	
# Room	Level	Dimensions (m)	
1 Living	Main	6.70 x 5.00	Overlook Water Hardwood Floor
2 Dining	Main	4.31 x 3.50	Overlook Water Hardwood Floor
3 Kitchen	Main	3.90 x 3.65	Overlook Water
4 Breakfast	Main	2.20 x 3.65	Overlook Water
5 Master	Main	6.10 x 4.10	Overlook Water Hardwood Floor
6 Br	Main	4.70 x 2.75	Overlook Water Hardwood Floor
7 Solarium	Main	2.20 x 2.20	Overlook Water Hardwood Floor
8 Solarium	Main	2.20 x 2.20	Overlook Water Hardwood Floor
Palace Place Is One Of The Most Prestigious, Luxurious, And Best Managed Waterfront Condominium Residences In Toronto! Most Sought After 03 Suite! The Best Views Of The Water And City Skyline! 2,028 Sf. Brand New Hardwood Floors. Absolutely Stunning! Minutes To Airport, Downtown, Dining, & Shopping! *Guest Suites *Shuttle Bus To Downtown + Shopping *Signature Services *World Class Health Club* Fridge, Stove, Dishwasher, Cooktop, Microwave, Washer, & Dryer.			
Listing Contracted With: ROYAL LEPAGE REAL ESTATE SERVICES LTD., BROKERAGE 416-236-1871			

Toronto Real Estate Board (TREB) assumes no responsibility for the accuracy of any information shown. Copyright TREB 2012