

WELCOME TO SOUTHAMPTON 1 RIPLEY AVENUE SUITE # 715



SOUTHAMPTON features numerous amenities, including a security system, with a 24-hour concierge, an indoor salt water pool and hot tub, a sensational lobby, a party room, a library, a games room, two guest suites, and rare in-suite maintenance service!



This residence is located in the village of Swansea, one of Toronto's finest neighborhoods. Swansea had been founded and built in 1926. However, Swansea had been first discovered in 1615 by Etienne Brule, whose name can still be found today in the historic Brule Gardens. Swansea had been named by John Worthington, who had named it after the village of Swansea in Wales, United Kingdom, for its' similar topography of rolling landscapes, twisting roads, and many lush trees that highlight the fairy-tale homes that form this enchanting neighborhood. Swansea is the only Toronto neighborhood to have a river, lake, and pond as its' natural boundaries. Swansea boasts some of Toronto's best shopping and dining destinations, the best schools in Toronto West, and quick travel times to the downtown core and the airport, via car or public transit.

FOR SALE AT: \$499,900

TAXES: \$3,717.17 (2012)

SPECIAL FEATURES

- Suite 715 features 9 foot ceilings, hardwood floors (in LR, DR, 2nd Bed, and den), broadloom in master, window coverings, including blinds and shutters, new white kitchen, with pot lighting and under counter lighting, brand new stainless steel appliances, fridge, stove, built-in dishwasher, built-in microwave, front load washer and dryer, gas fireplace, built-in cabinets in second bedroom, mirror accents in foyer and den, crown mouldings, and architectural pillars.
- Two parking spots and one locker are included.

**EXCEEDING EXPECTATIONS**
DAIVA DALINDA
Broker

**ROYAL LEPAGE**
Royal LePage Real Estate Services Limited, Brokerage

**LUKE DALINDA**
Sales Representative

Royal LePage Real Estate Services Ltd., Brokerage Tel. (416) 236-1871 Email: ddalinda@dalinda.net

The information that has been written herein has been obtained from sources that have been deemed reliable. There has been no reason to doubt its accuracy, but, regretfully, it cannot be guaranteed. Royal LePage Real Estate Services Ltd., Brokerage. © DalindaTeam.com.

WELCOME TO SOUTHAMPTON 1 RIPLEY AVENUE SUITE # 715



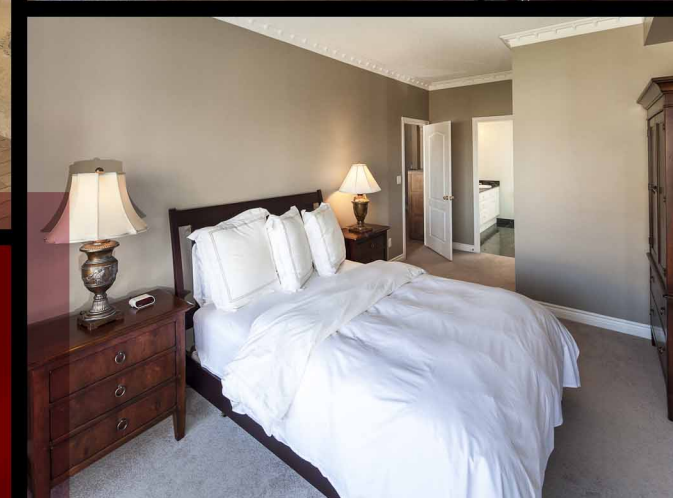
Southampton is a luxury condominium building that had been built by Tridel in sought after Swansea village. Suite 715 is a stunning residence, with 2-bedrooms, plus a den, approximately 1,416 square feet of living space, and a sunny south exposure, with lake view.

**EXCEEDING EXPECTATIONS**
DAIVA DALINDA
Broker

**ROYAL LEPAGE**
Royal LePage Real Estate Services Limited, Brokerage

**LUKE DALINDA**
Sales Representative

Royal LePage Real Estate Services Ltd., Brokerage Tel. (416) 236-1871 Email: ddalinda@dalinda.net



From the moment you step in, you will appreciate the uncompromising attention to detail in every room. Natural light floods the whole unit. This is an ideal home for professional couples, who want the convenient and carefree lifestyle that a luxury condominium offers.

