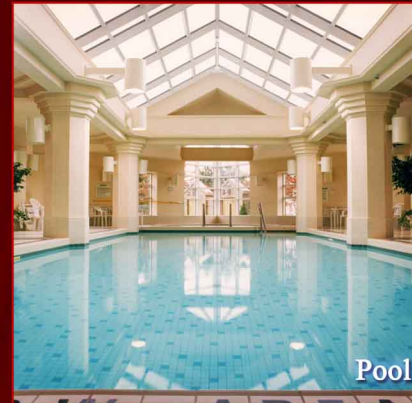


WELCOME TO PALACE PLACE
1 PALACE PIER COURT
SUITE # 3 5 0 4



Palace Place features a modern mix of Oriental and Louis XV inspired furnishings and accessories.



Pool

Taking as its inspiration the legendary waterfront estates of the Gatsby era, Palace Place represents a chic and sophisticated view of condominium living, one without precedent in Toronto.

PALACE PLACE features every conceivable amenity, including valet parking, a security system, with a 24-hour concierge, guards, and video surveillance, signature services, guest suites, shuttle bus service, and a world-class health club, with a squash court, a racquetball court, a sauna room, an indoor pool, a recreation room, and a rooftop lounge. It is conveniently located, with easy access to major arteries, particularly Lakeshore Boulevard, the Gardiner Expressway, and the Queen Elizabeth Way. It is approximately a 5-minute drive to downtown Toronto and 15-minutes to the airport.



View from 47th floor

FOR SALE AT: \$353,000

MAINTENANCE: \$650.68



Learn more about Palace Place by ordering,
PALACE PLACE: THE BOOK
dalinda.net/PalacePlaceBook

SPECIAL FEATURES

- Suite 3504 features an extended marble entrance and new wood flooring.
- Brand new appliances include fridge, stove, microwave, and dishwasher. Washer and dryer are also included.
- One parking spot and one large locker are included.

Watch Palace Place on
You Tube
[www.YouTube.com/
PalacePlaceToronto](http://www.YouTube.com/PalacePlaceToronto)

EXCEEDING EXPECTATIONS



DAIVA DALINDA
Broker



ROYAL LEPAGE
Royal LePage Real Estate Services Limited, Brokerage



LUKE DALINDA
Sales Representative

Royal LePage Real Estate Services Ltd., Brokerage Tel. (416) 236-1871 Email: ldalinda@dalinda.net

The information that has been written herein has been obtained from sources that have been deemed reliable. There has been no reason to doubt its accuracy, but, regretfully, it cannot be guaranteed. Royal LePage Real Estate Services Ltd., Brokerage. © DalindaTeam.com.

WELCOME TO PALACE PLACE
1 PALACE PIER COURT
SUITE # 3 5 0 4



ON A CLEAR DAY, YOU CAN SEE FOREVER!

Breathtaking is the word that best describes Palace Place, which is the most prestigious, luxurious, and best managed waterfront condominium residence in Canada. Suite 3504 is a stunning condominium residence, with approximately 833 square feet of living space and enchanting lake views.

EXCEEDING EXPECTATIONS



DAIVA DALINDA
Broker

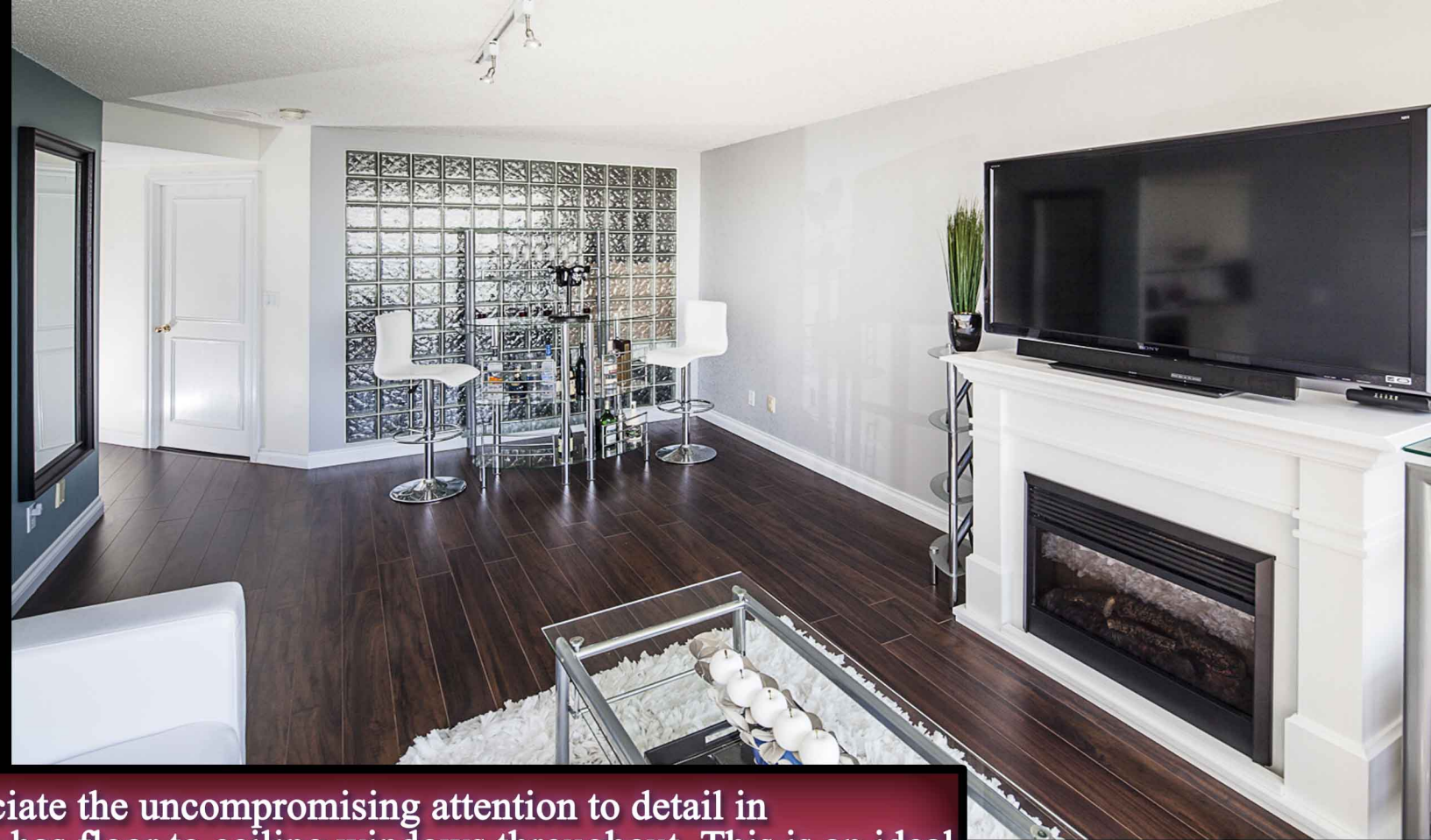


ROYAL LEPAGE
Royal LePage Real Estate Services Limited, Brokerage

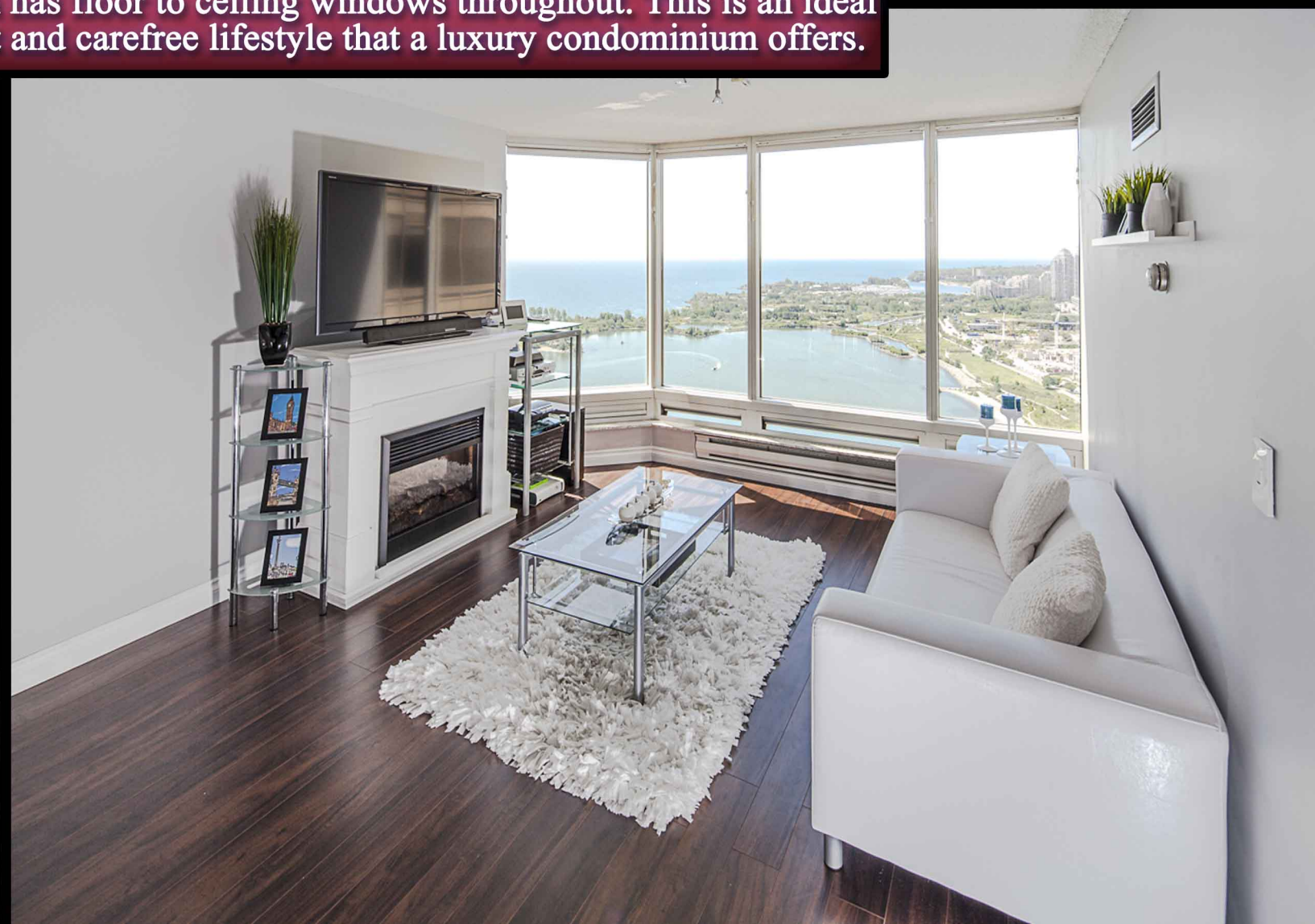


LUKE DALINDA
Sales Representative

Royal LePage Real Estate Services Ltd., Brokerage Tel. (416) 236-1871 Email: ldalinda@dalinda.net



From the moment you step in, you will appreciate the uncompromising attention to detail in every room. Natural light floods the whole unit, which has floor to ceiling windows throughout. This is an ideal home for professional couples, who want the convenient and carefree lifestyle that a luxury condominium offers.



FLOOR PLAN

1 PALACE PIER COURT SUITE 3504

The Shore Point

SUITE O4
790/833 SQ. FT.
(FLOORS 2 THRU 28/29 THRU 44)

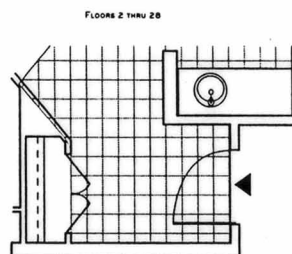
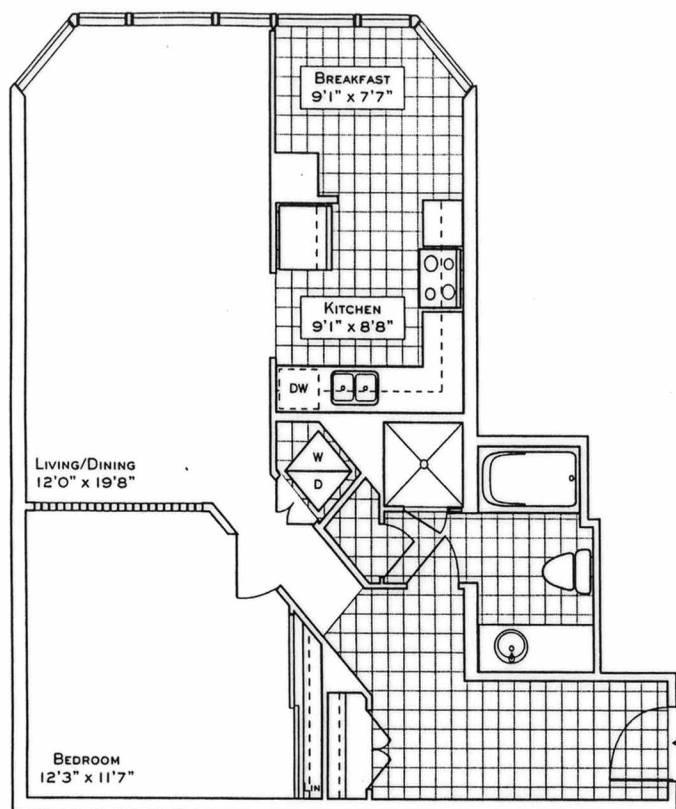
SUITE O7
788/833 SQ. FT.
(FLOORS 2 THRU 28/29 THRU 44)

Your new home at Palace Place is about a million miles from the ordinary, offering a symbiotic lifestyle in a landmark building. From valet parking to the unsurpassed service of the concierge who, like the manager of a 5-star hotel, will cater to your every whim.

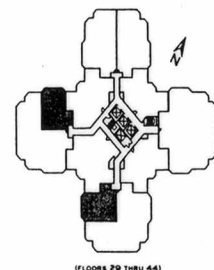
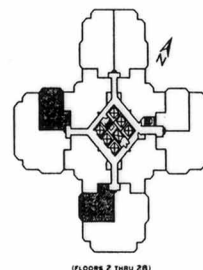
Play squash, swim, work-out or relax in a soothing whirlpool. The rooftop "Lakeshore Club" offers an exclusive dining room, video theatre, and party facilities with 360° views of the city and lake that are truly breathtaking.

Additionally, there is a private shuttle service to and from downtown, a fully equipped business centre, tuck shop off the lobby and, for overnight visitors, guest suites.

Living at Palace Place, on your private peninsula overlooking Lake Ontario, is an experience that can never, will never, be duplicated. Enjoy.



PALACE PLACE



These specifications and floor plans are approximations and are for illustrative purposes only and may not coincide with the actual units or construction. These plans may be verified by inspecting the unit as well as the condominium plan registered as title. Actual results may vary and may not be the same as shown in accordance with CONTO guidelines. Floor plans are not to scale.

ROYAL LEPAGE
Royal LePage Real Estate Services Limited, Brokerage

Daiva Dalinda, Broker, and Luke Dalinda, Sales Representative
Royal LePage Real Estate Services Ltd., Brokerage
416 236 1871 ldalinda@Dalinda.net



The information that has been written herein has been obtained from sources that have been deemed reliable. There has been no reason to doubt its accuracy, but, regretfully, it cannot be guaranteed. Royal LePage Real Estate Services Ltd., Brokerage. © DalindaTeam.com.