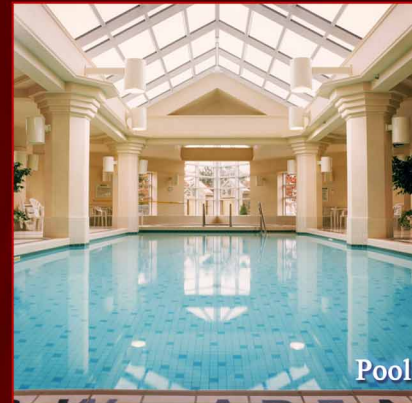


# WELCOME TO PALACE PLACE 1 PALACE PIER COURT SUITE # 2208



*Palace Place features a modern mix of Oriental and Louis XV inspired furnishings and accessories.*



Pool

*Taking as its inspiration the legendary waterfront estates of the Gatsby era, Palace Place represents a chic and sophisticated view of condominium living, one without precedent in Toronto.*

PALACE PLACE features every conceivable amenity, including valet parking, a security system, with a 24-hour concierge, guards, and video surveillance, signature services, guest suites, shuttle bus service, and a world-class health club, with a squash court, a racquetball court, a sauna room, an indoor pool, a recreation room, and a rooftop lounge. It is conveniently located, with easy access to major arteries, particularly Lakeshore Boulevard, the Gardiner Expressway, and the Queen Elizabeth Way. It is approximately a 5-minute drive to downtown Toronto and 15-minutes to the airport.



View from 47th floor

FOR SALE AT: \$560,000

MAINTENANCE: \$934.13



Learn more about Palace Place by ordering,  
**PALACE PLACE: THE BOOK**  
[dalinda.net/PalacePlaceBook](http://dalinda.net/PalacePlaceBook)

## SPECIAL FEATURES

- Suite 2208 features 5-inch dark oak hardwood floors (glued down, not floating), a Bain ultra bathtub/spa, with self-cleaning feature and mood lighting, all new taps, limestone/marble ensuite bath, a marble seat, with river rock floor in the master shower, heated floors and floating vanities in ensuite and powder room, smooth ceilings, an antique brown granite counter in the kitchen, and fine porcelain floors in the kitchen and hallway.
- Appliances include a stainless steel French door fridge, a stainless steel glass cooktop, a stainless steel range hood, an oven, a stainless steel dishwasher, a wine fridge, and a top of the line washer and dryer.
- One parking spot is included.

Watch Palace Place on



[www.YouTube.com/  
PalacePlaceToronto](http://www.YouTube.com/PalacePlaceToronto)



DAIVA DALINDA  
Broker



LUKE DALINDA  
Sales Representative



Royal LePage Real Estate Services Ltd., Brokerage Tel. (416) 236-1871 Email: [ldalinda@dalinda.net](mailto:ldalinda@dalinda.net)

*The information that has been written herein has been obtained from sources that have been deemed reliable. There has been no reason to doubt its accuracy, but, regretfully, it cannot be guaranteed. Royal LePage Real Estate Services Ltd., Brokerage. © DalindaTeam.com.*

# WELCOME TO PALACE PLACE 1 PALACE PIER COURT SUITE # 2208



## ARCHITECTURAL DIGEST QUALITY. RENOVATED BEYOND COMPARE.

Breathtaking is the word that best describes Palace Place, which is the most prestigious, luxurious, and best managed waterfront condominium residence in Canada. Suite 2208 is a dramatic condominium residence, with approximately 1,223 square feet of living space and stunning views of Humber Bay Shores. Suite 2208 has been completely renovated for the discerning buyer, who appreciates quality workmanship and sophisticated styling.



DAIVA DALINDA  
Broker

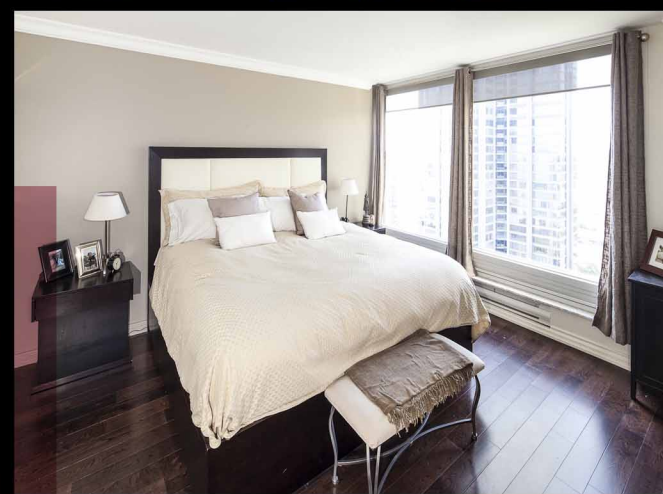
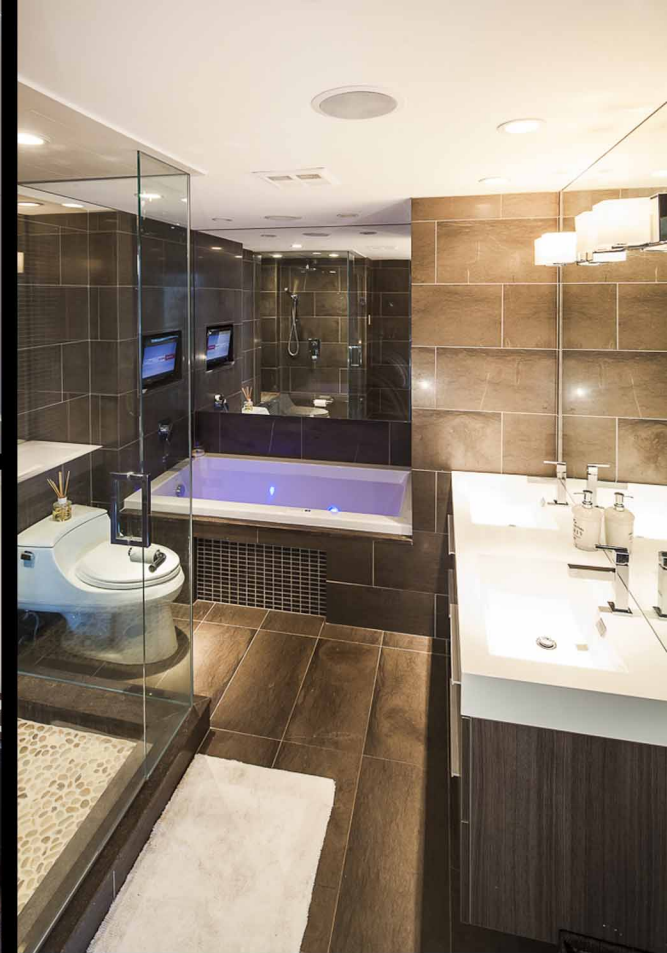


LUKE DALINDA  
Sales Representative

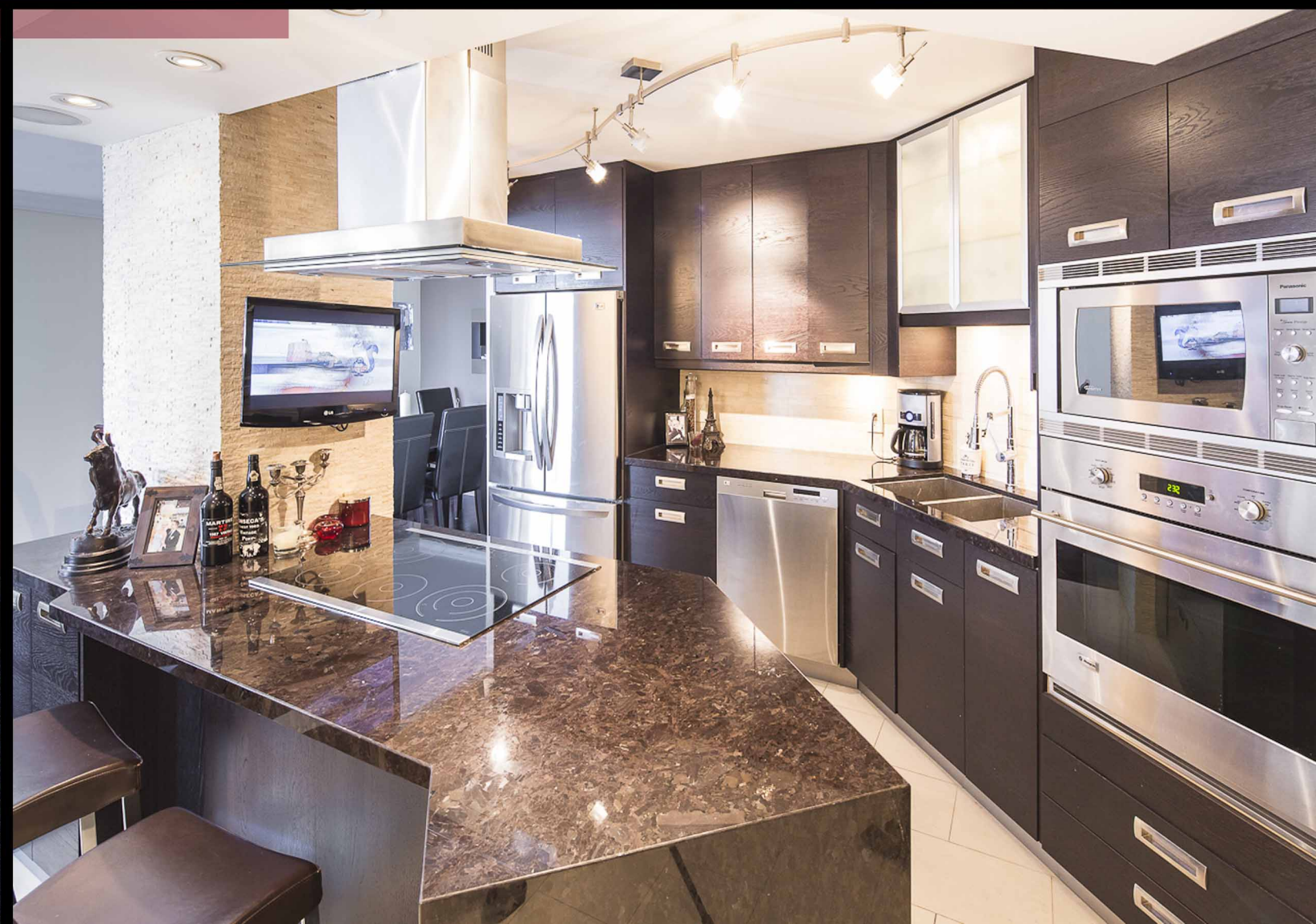
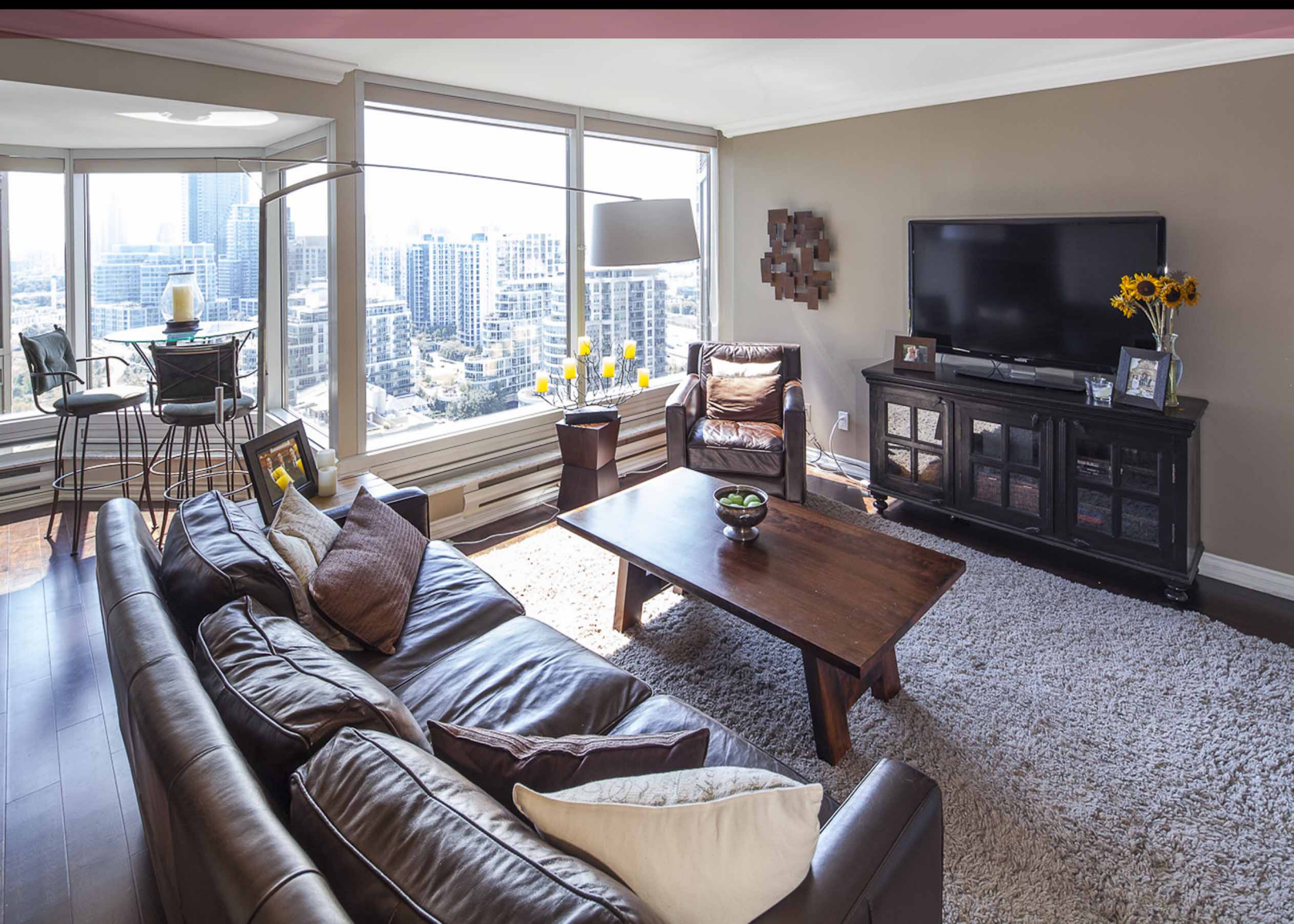


Royal LePage Real Estate Services Ltd., Brokerage Tel. (416) 236-1871 Email: [ldalinda@dalinda.net](mailto:ldalinda@dalinda.net)





From the moment you step in, you will appreciate the uncompromising attention to detail in every room. Natural light floods the whole unit, which has floor to ceiling windows throughout. This is an ideal home for professional couples, who want the convenient and carefree lifestyle that a luxury condominium offers.





# FLOOR PLAN

# 1 PALACE PIER COURT SUITE 2208

The  
Bay  
Point

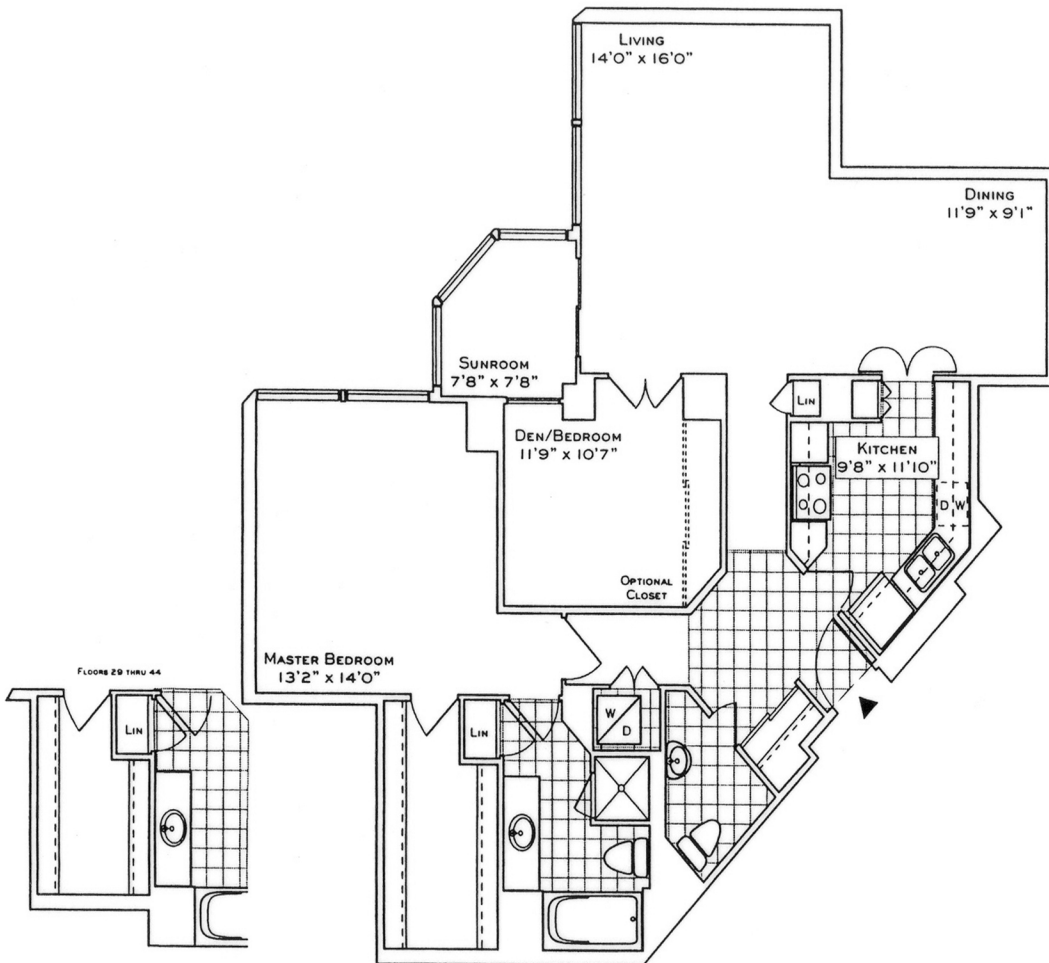
SUITE 08  
1223 SQ. FT.  
(FLOORS 2 THRU 28)  
1201 SQ. FT.  
(FLOORS 29 THRU 44)

Your new home at Palace Place is about a million miles from the ordinary, offering a vibrant lifestyle in a landmark building. From valet parking to the unsurpassed service of the concierge who, like the manager of a 5-star hotel, will cater to your every whim.

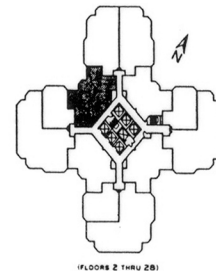
Play squash, swim, work-out or relax in a soothing whirlpool. The rooftop "Lakeshore Club" offers an exclusive dining room, video theatre, and party facilities with 360° views of the city and lake that are truly breathtaking.

Additionally, there is a private shuttle service to and from downtown, a fully equipped business centre, rack shop off the lobby and for overnight visitors, guest suites.

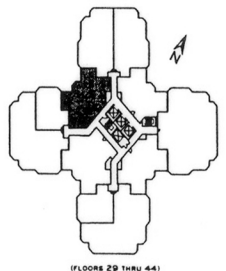
Living at Palace Place, on your private peninsula overlooking Lake Ontario, is an experience that can never, will never, be duplicated. Enjoy.



**PALACE PLACE**



(FLOORS 2 THRU 28)



(FLOORS 29 THRU 44)

Plans, specifications and dimensions shown are approximate and are for illustrative purposes only and may not coincide with the existing plans as constructed. Buyer should verify by inspecting the site as well as the condominium plan registered on file. Actual usable floor area may vary from the stated floor area in accordance with OSCEW practices. Plans shown are not to scale.

**ROYAL LePAGE**  
Royal LePage Real Estate Services Limited, Brokerage

Daiva Dalinda, Broker, and Luke Dalinda, Sales Representative  
Royal LePage Real Estate Services Ltd., Brokerage  
416 236 1871 ldalinda@Dalinda.net



The information that has been written herein has been obtained from sources that have been deemed reliable. There has been no reason to doubt its accuracy, but, regretfully, it cannot be guaranteed. Royal LePage Real Estate Services Ltd., Brokerage. © DalindaTeam.com.