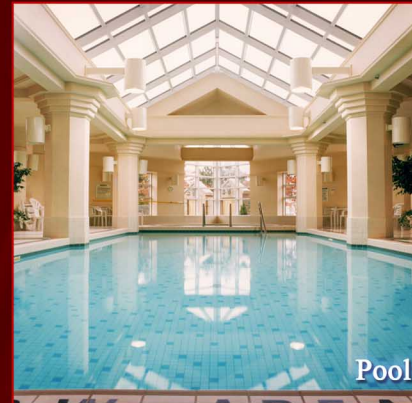


# WELCOME TO PALACE PLACE 1 PALACE PIER COURT SUITE # 1707



*Palace Place features a modern mix of Oriental and Louis XV inspired furnishings and accessories.*



*Taking as its inspiration the legendary waterfront estates of the Gatsby era, Palace Place represents a chic and sophisticated view of condominium living, one without precedent in Toronto.*

PALACE PLACE features every conceivable amenity, including valet parking, a security system, with a 24-hour concierge, guards, and video surveillance, signature services, guest suites, shuttle bus service, and a world-class health club, with a squash court, a racquetball court, a sauna room, an indoor pool, a recreation room, and a rooftop lounge. It is conveniently located, with easy access to major arteries, particularly Lakeshore Boulevard, the Gardiner Expressway, and the Queen Elizabeth Way. It is approximately a 5-minute drive to downtown Toronto and 15-minutes to the airport.



**FOR SALE AT: \$317,000**

**MAINTENANCE: \$650.58**



Learn more about Palace Place by ordering,  
**PALACE PLACE: THE BOOK**  
[dalinda.net/PalacePlaceBook](http://dalinda.net/PalacePlaceBook)

Watch Palace Place on  
**You Tube**  
[www.YouTube.com/  
PalacePlaceToronto](http://www.YouTube.com/PalacePlaceToronto)

## SPECIAL FEATURES

- Suite 1707 features an extended marble entrance and brand new wood flooring. It has been professionally painted, and it has not been lived in since the March 2012 renovation.
- Barely used appliances include fridge, stove, microwave, dishwasher, and washer and dryer.
- One parking spot and one oversized locker are included.



DAIVA DALINDA  
Broker



LUKE DALINDA  
Sales Representative



Royal LePage Real Estate Services Ltd., Brokerage Tel. (416) 236-1871 Email: [ldalinda@dalinda.net](mailto:ldalinda@dalinda.net)

*The information that has been written herein has been obtained from sources that have been deemed reliable. There has been no reason to doubt its accuracy, but, regretfully, it cannot be guaranteed. Royal LePage Real Estate Services Ltd., Brokerage. © DalindaTeam.com.*

# WELCOME TO PALACE PLACE 1 PALACE PIER COURT SUITE # 1707



**ON A CLEAR DAY, YOU CAN SEE FOREVER!**

Breathtaking is the word that best describes Palace Place, which is the most prestigious, luxurious, and best managed waterfront condominium residence in Canada. Suite 1707 is a stunning, newly renovated condominium residence, with approximately 788 square feet of living space and beautiful Humber River views.



DAIVA DALINDA  
Broker



LUKE DALINDA  
Sales Representative



Royal LePage Real Estate Services Ltd., Brokerage Tel. (416) 236-1871 Email: [ldalinda@dalinda.net](mailto:ldalinda@dalinda.net)





From the moment you step in, you will appreciate the uncompromising attention to detail in every room. Natural light floods the whole unit, which has floor to ceiling windows throughout. This is an ideal home for professional couples, who want the convenient and carefree lifestyle that a luxury condominium offers.





# FLOOR PLAN

# 1 PALACE PIER COURT

## SUITE 1707

The  
Shore  
Point

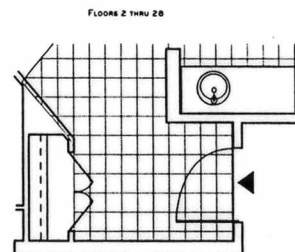
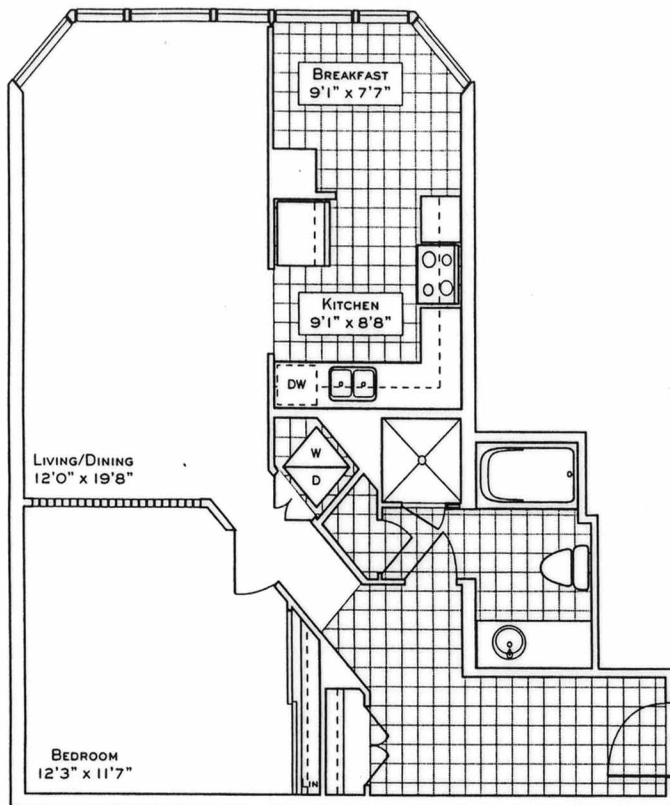
SUITE 04  
790/833 SQ. FT.  
(FLOORS 2 THRU 28/29 THRU 44)  
SUITE 07  
788/833 SQ. FT.  
(FLOORS 2 THRU 28/29 THRU 44)

Your new home at Palace Place is about a million miles from the ordinary, offering a cybernetic lifestyle in a landmark building. From valet parking to the unsurpassed service of the concierge who, like the manager of a 5-star hotel, will cater to your every whim.

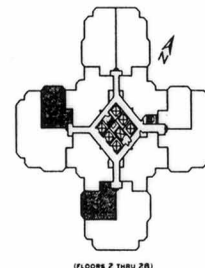
Play squash, swim, work-out or relax in a soothing whirlpool. The rooftop "Lakeshore Club" offers an exclusive dining room, video theatre, and party facilities with 360° views of the city and lake that are truly breathtaking.

Additionally, there is a private shuttle service to and from downtown, a fully equipped business centre, tuck shop off the lobby and, for overnight visitors, guest suites.

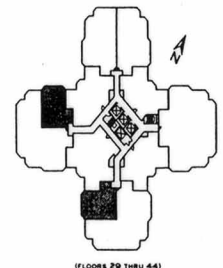
Living at Palace Place, on your private peninsula overlooking Lake Ontario, is an experience that can never, will never, be duplicated. Enjoy.



**PALACE PLACE**



(FLOORS 2 THRU 28)



(FLOORS 29 THRU 44)

These specifications and illustrations are for illustrative purposes only and may not comply with the zoning code or other applicable laws. These plans may be modified by the City of Toronto. The actual floor plan may vary from the actual floor plan in accordance with the City of Toronto's planning policies. These plans are not to scale.

**ROYAL LePAGE**  
Royal LePage Real Estate Services Limited, Brokerage

Daiva Dalinda, Broker, and Luke Dalinda, Sales Representative  
Royal LePage Real Estate Services Ltd., Brokerage  
416 236 1871 [ldalinda@Dalinda.net](mailto:ldalinda@Dalinda.net)



The information that has been written herein has been obtained from sources that have been deemed reliable. There has been no reason to doubt its accuracy, but, regretfully, it cannot be guaranteed. Royal LePage Real Estate Services Ltd., Brokerage. © DalindaTeam.com.