



1 Palace Pier Crt4009 \$2,700
 Toronto, Ontario M8V3W9119-11-S For: Lease
 Toronto W06MimicoToronto SPIS: N

Condo Apt Locker#: Rms: 6
 Apartment Level: 39 Bedrooms: 2 + 1
 Dir/Cross St: Lake Unit#: 09 Washrooms: 2
 Shore/Palace Pier 1x4, 1x3
 Corp#: MTCC /
 1053
 Prop Mgmt: Brookfield
 416-503-1200

MLS#: W2389159 DOM: 2 Contract Date: 6/11/2012 Possession: Immediate PIN#:

Kitchens: 1	Pets Perm: Restrict	Balcony: None
Fam Rm: N	Locker: None	Exterior: Alum Siding
Basement: None	Maintanance:	Gar/Pk Sp: Undergrnd
Fireplace/Stv: N	A/C: Central Air Central Vac:	Park/Drive: Undergrnd
Heat: Forced Air / Electric	UFFI:	Park Type: Owned
Apx Age:	Elevator: Retirement:	Park Spcs: 134B
Apx Sqft: 1400-1599	All Incl: Y Water Incl: Y	Park \$/Mo:
Exposure: W	Heat Incl: Y Hydro Incl: Y	Prk Lgl Dsc:
Spec Desig: Unknown	Cable TV Incl: Y CAC Incl: Y	Bldg Amen: Concierge, Guest Suites, Gym,
Phsy Hdcap-Equip:	Bldg Ins Incl: Y Prkg Incl: Y	Indoor Pool, Party/Meeting Room, Security Guard
	ComElem Inc: Y	
	Pvt Ent: Y Furnished: N	
	Lndry Acc: Ensuite	
	Lndry Lev:	

Room	Level	Length	Width	Description	
Living	Flat	5.45	4.51	Overlook Water	Wood Floor
Dining	Flat	3.59	3.35	Wood Floor	
Kitchen	Flat	3.26	3.35	Granite Counter	
Master	Flat	4.96	3.65	Overlook Water	
2nd Br	Flat	4.63	2.77	Overlook Water	
Solarium	Flat	2.31	2.31	Wood Floor	French Doors

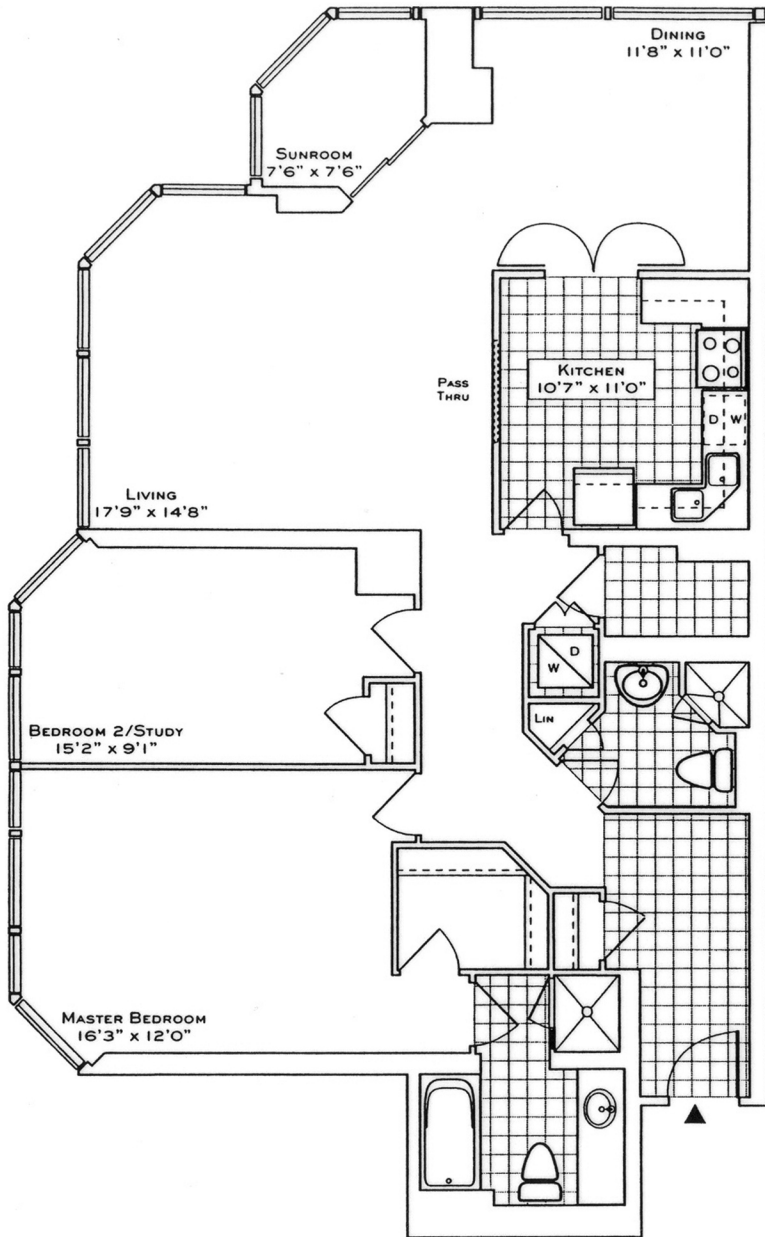
Palace Place Is One Of The Most Prestigious, Luxurious, And Best Managed Waterfront Condominium Residences In Canada! Enchanting Views Of Lake, Humber Bay Shores, Humber River, And Swansea Village! 1,388 Sf Of Immaculate Living Space. Stunning Wood Floors! Magnificent Kitchen, With Granite Counters And Center Island. Minutes To Airport, Downtown, Dining, & Shopping! **Guest Suites* *Shuttle Bus To Downtown* *Signature Services* *World Class Health Club**
 Stainless Steel Fridge, Stove, And Dishwasher. Microwave, Washer, And Dryer.

Listing Contracted With: [ROYAL LEPAGE REAL ESTATE SERVICES LTD., BROKERAGE](#) 416-236-1871

FLOOR PLAN

1 PALACE PIER COURT

SUITES 09 & 10



The Park Point

SUITE 09
1388/1387 SQ. FT.
(FLOORS 2 THRU 28/29 THRU 44)

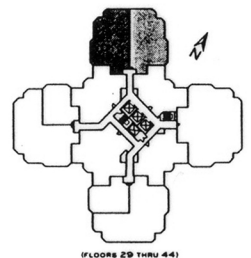
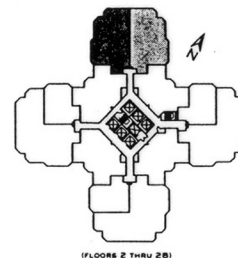
SUITE 10
(REVERSE PLAN)
1388/1395 SQ. FT.
(FLOORS 2 THRU 28/29 THRU 44)

Your new home at Palace Place is about a million miles from the ordinary, offering a symbiotic lifestyle in a landmark building. From valet parking to the unsurpassed service of the concierge who, like the manager of a 5-star hotel, will cater to your every whim.

Play squash, swim, work-out or relax in a soothing whirlpool. The rooftop "Lakeshore Club" offers an exclusive dining room, video theatre, and party facilities with 360° views of the city and lake that are truly breathtaking.

Additionally, there is a private shuttle service to and from downtown, a fully equipped business centre, tuck shop off the lobby and, for overnight visitors, guest suites.

Living at Palace Place, on your private peninsula overlooking Lake Ontario, is an experience that can never, will never, be duplicated. Enjoy.



Plans, specifications and dimensions shown are approximate and are for illustrative purposes only and may not coincide with the existing units or construction. Buyer must verify by inspecting the units as well as the construction plans registered on file before making any purchase. Plans shown are not to scale.



Daiva Dalinda, Broker, and Luke Dalinda, Sales Representative
Royal LePage Real Estate Services Ltd., Brokerage
416 236 1871 ldalinda@Dalinda.net



The information that has been written herein has been obtained from sources that have been deemed reliable. There has been no reason to doubt its accuracy, but, regretfully, it cannot be guaranteed. Royal LePage Real Estate Services Ltd., Brokerage. © DalindaTeam.com.