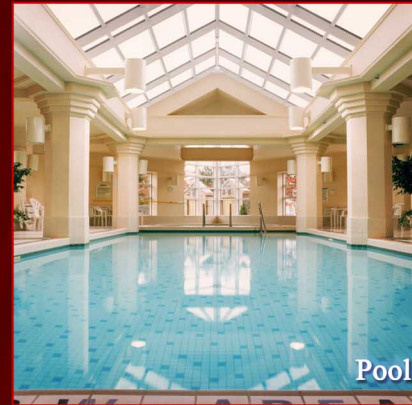


WELCOME TO PALACE PLACE  
**1 PALACE PIER COURT**  
 SUITE # 4305



*Palace Place features a modern mix of Oriental and Louis XV inspired furnishings and accessories.*



*Taking as its inspiration the legendary waterfront estates of the Gatsby era, Palace Place represents a chic and sophisticated view of condominium living, one without precedent in Toronto.*

*PALACE PLACE features every conceivable amenity, including valet parking, a security system, with a 24-hour concierge, guards, and video surveillance, signature services, guest suites, shuttle bus service, and a world-class health club, with a squash court, a racquetball court, a sauna room, an indoor pool, a recreation room, and a rooftop lounge. It is conveniently located, with easy access to major arteries, particularly Lakeshore Boulevard, the Gardiner Expressway, and the Queen Elizabeth Way. It is approximately a 5-minute drive to downtown Toronto and 15-minutes to the airport.*



**FOR SALE AT: \$628,000**

**MAINTENANCE: \$1,174.70**



Learn more about Palace Place by ordering,  
**PALACE PLACE: THE BOOK**  
[dalinda.net/PalacePlaceBook](http://dalinda.net/PalacePlaceBook)

**SPECIAL FEATURES**

Watch Palace Place on  
**YouTube**  
[www.YouTube.com/PalacePlaceToronto](http://www.YouTube.com/PalacePlaceToronto)

- Suite 4305 features beautiful wood flooring, marble counters, an extended marble entrance, hallogen pot lighting, and all new faucets.
- Brand new (2012) appliances include fridge, stove, microwave, dishwasher, and washer and dryer.
- One parking spot and one locker are included.



**EXCEEDING EXPECTATIONS**

Luke Dalinda, Sales Representative  
 Royal LePage Real Estate Services Ltd., Brokerage  
 W: 416 236 1871 C: 416 725 7170  
[ldalinda@Dalinda.net](mailto:ldalinda@Dalinda.net)



*The information that has been written herein has been obtained from sources that have been deemed reliable. There has been no reason to doubt its accuracy, but, regretfully, it cannot be guaranteed. Royal LePage Real Estate Services Ltd., Brokerage. © DalindaTeam.com.*

WELCOME TO PALACE PLACE  
**1 PALACE PIER COURT**  
 SUITE # 4305



**ON A CLEAR DAY, YOU CAN SEE FOREVER!**

Breathtaking is the word that best describes Palace Place, which is the most prestigious, luxurious, and best managed waterfront condominium residence in Canada. Suite 4305 is a highly sought-after, immaculate condominium residence, with approximately 1,491 square feet of living space and enchanting views of the lake.

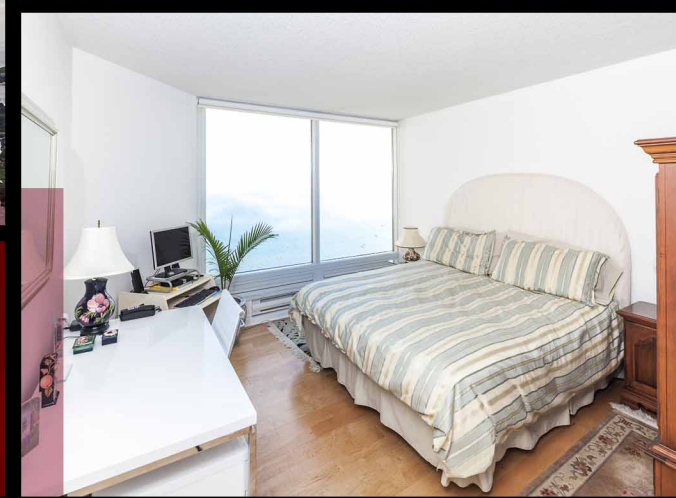
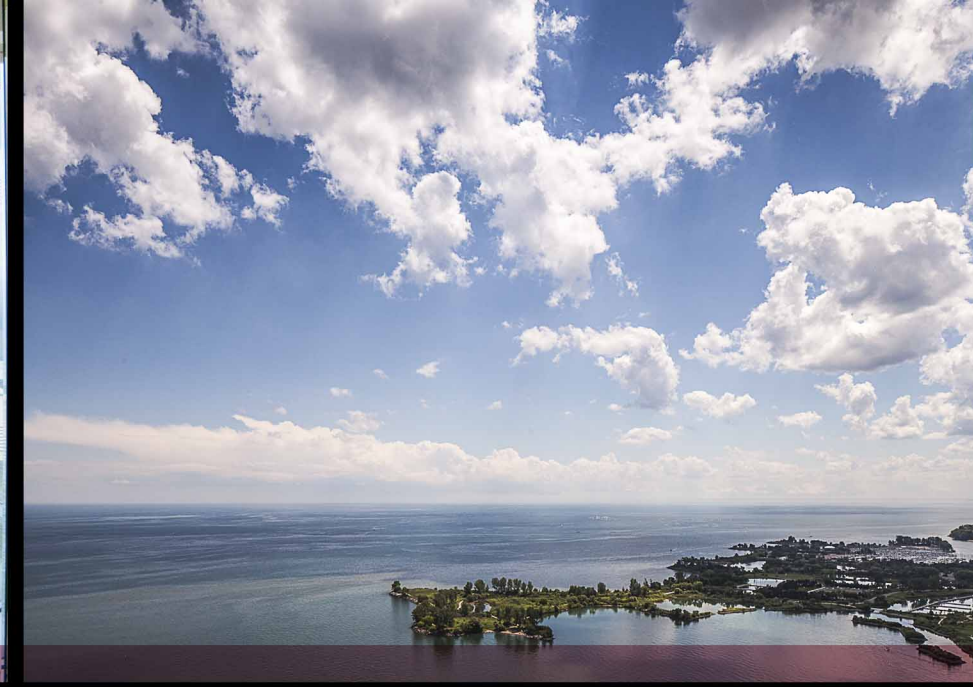


**EXCEEDING EXPECTATIONS**

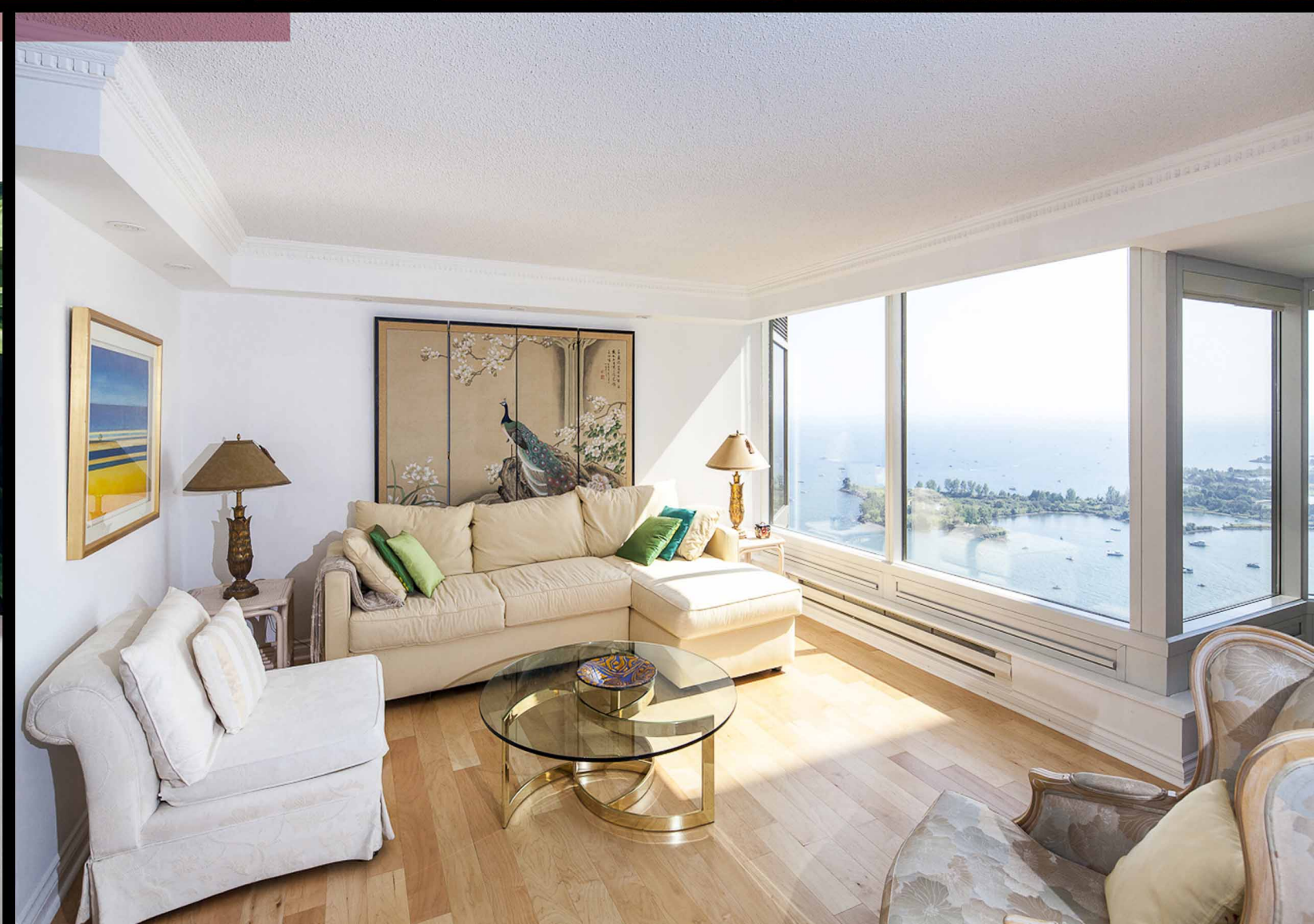
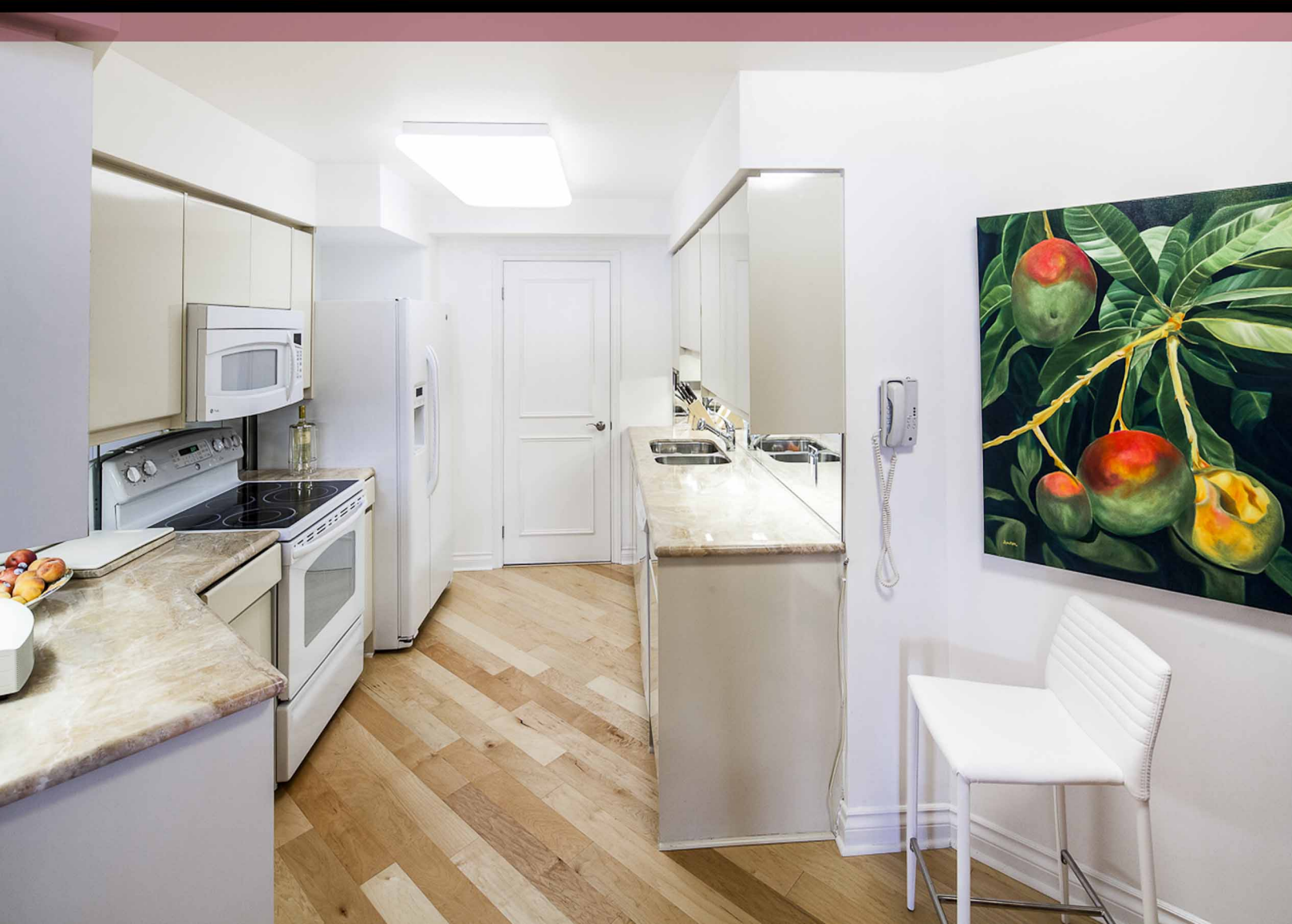
Luke Dalinda, Sales Representative  
 Royal LePage Real Estate Services Ltd., Brokerage  
 W: 416 236 1871 C: 416 725 7170  
[ldalinda@Dalinda.net](mailto:ldalinda@Dalinda.net)







**F**rom the moment you step in, you will appreciate the uncompromising attention to detail in every room. Natural light floods the whole unit, which has floor to ceiling windows throughout. This is an ideal home for professional couples, who want the convenient and carefree lifestyle that a luxury condominium offers.





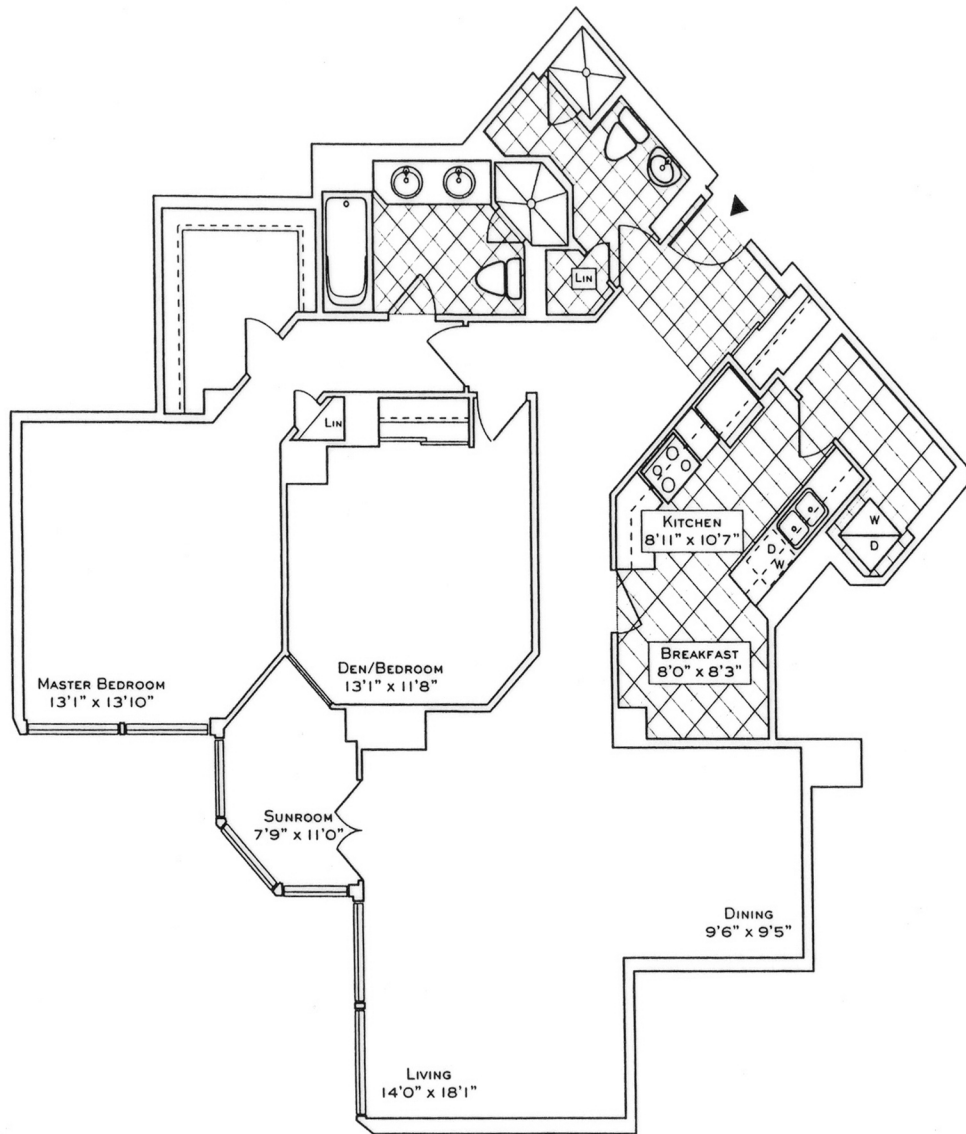
# FLOOR PLAN

# 1 PALACE PIER COURT

## SUITE 4305

## The Vista Point

SUITE 05  
1491 SQ. FT.  
(FLOORS 29 THRU 44)

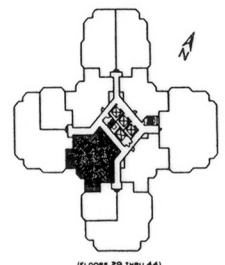


Your new home at Palace Place is about a million miles from the ordinary, offering a sybaritic lifestyle in a landmark building. From valet parking to the unsurpassed service of the concierge who, like the manager of a 5-star hotel, will cater to your every whim.

Play squash, swim, work-out or relax in a soothing whirlpool. The rooftop "Lakeshore Club" offers an exclusive dining room, video theatre, and party facilities with 360° views of the city and lake that are truly breathtaking.

Additionally, there is a private shuttle service to and from downtown, a fully equipped business centre, tuck shop off the lobby and, for overnight visitors, guest suites.

Living at Palace Place, on your private peninsula overlooking Lake Ontario, is an experience that can never will never be duplicated. Enjoy.



(FLOORS 29 THRU 44)

Plans, specifications and dimensions shown are approximate and are for illustrative purposes only and may not coincide with the existing plans or construction. Errors may be made by measuring the site or with the construction plans prepared on site. Actual usable floor space may vary from the stated floor area in accordance with OCEA's guidelines. Plans shown are not to scale.



Daiva Dalinda, Broker, and Luke Dalinda, Sales Representative  
Royal LePage Real Estate Services Ltd., Brokerage  
416 236 1871 [ldalinda@Dalinda.net](mailto:ldalinda@Dalinda.net)



*The information that has been written herein has been obtained from sources that have been deemed reliable. There has been no reason to doubt its accuracy, but, regretfully, it cannot be guaranteed. Royal LePage Real Estate Services Ltd., Brokerage. © DalindaTeam.com.*