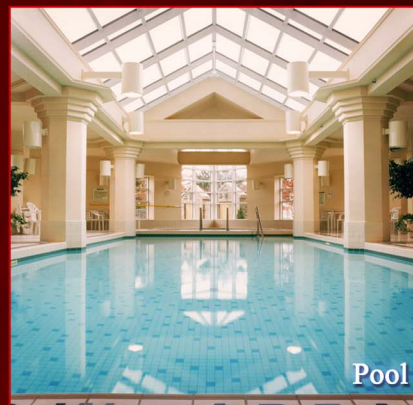


WELCOME TO PALACE PLACE  
**1 PALACE PIER COURT**  
SUITE # 3006



*Palace Place features a modern mix of Oriental and Louis XV inspired furnishings and accessories.*



*Taking as its inspiration the legendary waterfront estates of the Gatsby era, Palace Place represents a chic and sophisticated view of condominium living, one without precedent in Toronto.*

PALACE PLACE features every conceivable amenity, including valet parking, a security system, with a 24-hour concierge, guards, and video surveillance, signature services, guest suites, shuttle bus service, and a world-class health club, with a squash court, a racquetball court, a sauna room, an indoor pool, a recreation room, and a rooftop lounge. It is conveniently located, with easy access to major arteries, particularly Lakeshore Boulevard, the Gardiner Expressway, and the Queen Elizabeth Way. It is approximately a 5-minute drive to downtown Toronto and 15-minutes to the airport.



**FOR SALE AT: \$759,000**

**MAINTENANCE: \$1,406.46**

**SPECIAL FEATURES**

- Suite 3006 features immaculate hardwood floors, crown mouldings, a stunning renovated kitchen, with granite counters, granite floors, and upgraded cabinetry, sun shades, upgraded faucets throughout, and much more.
- All new appliances include fridge, stove, microwave, Miele dishwasher, and silent LG washer and dryer.
- One parking spot and one large locker are included.

Watch Palace Place on  
**You Tube**  
www.YouTube.com/  
PalacePlaceToronto

**EXCEEDING EXPECTATIONS**

DAIVA DALINDA  
Broker

ROYAL LePAGE  
Royal LePage Real Estate Services Limited, Brokerage

LUKE DALINDA  
Sales Representative

Royal LePage Real Estate Services Ltd., Brokerage Tel. (416) 236-1871 Email: ldalinda@dalinda.net

*The information that has been written herein has been obtained from sources that have been deemed reliable. There has been no reason to doubt its accuracy, but, regretfully, it cannot be guaranteed. Royal LePage Real Estate Services Ltd., Brokerage. © DalindaTeam.com.*

WELCOME TO PALACE PLACE  
**1 PALACE PIER COURT**  
SUITE # 3006



Breathtaking is the word that best describes Palace Place, which is the most prestigious, luxurious, and best managed waterfront condominium residence in Canada. Suite 3006 is a magnificent condominium residence, with approximately 2,028 square feet of living space and enchanting views of Lake Ontario, the city, and the Humber Bay Shores parkland.

**EXCEEDING EXPECTATIONS**

DAIVA DALINDA  
Broker

ROYAL LePAGE  
Royal LePage Real Estate Services Limited, Brokerage

LUKE DALINDA  
Sales Representative

Royal LePage Real Estate Services Ltd., Brokerage Tel. (416) 236-1871 Email: ldalinda@dalinda.net





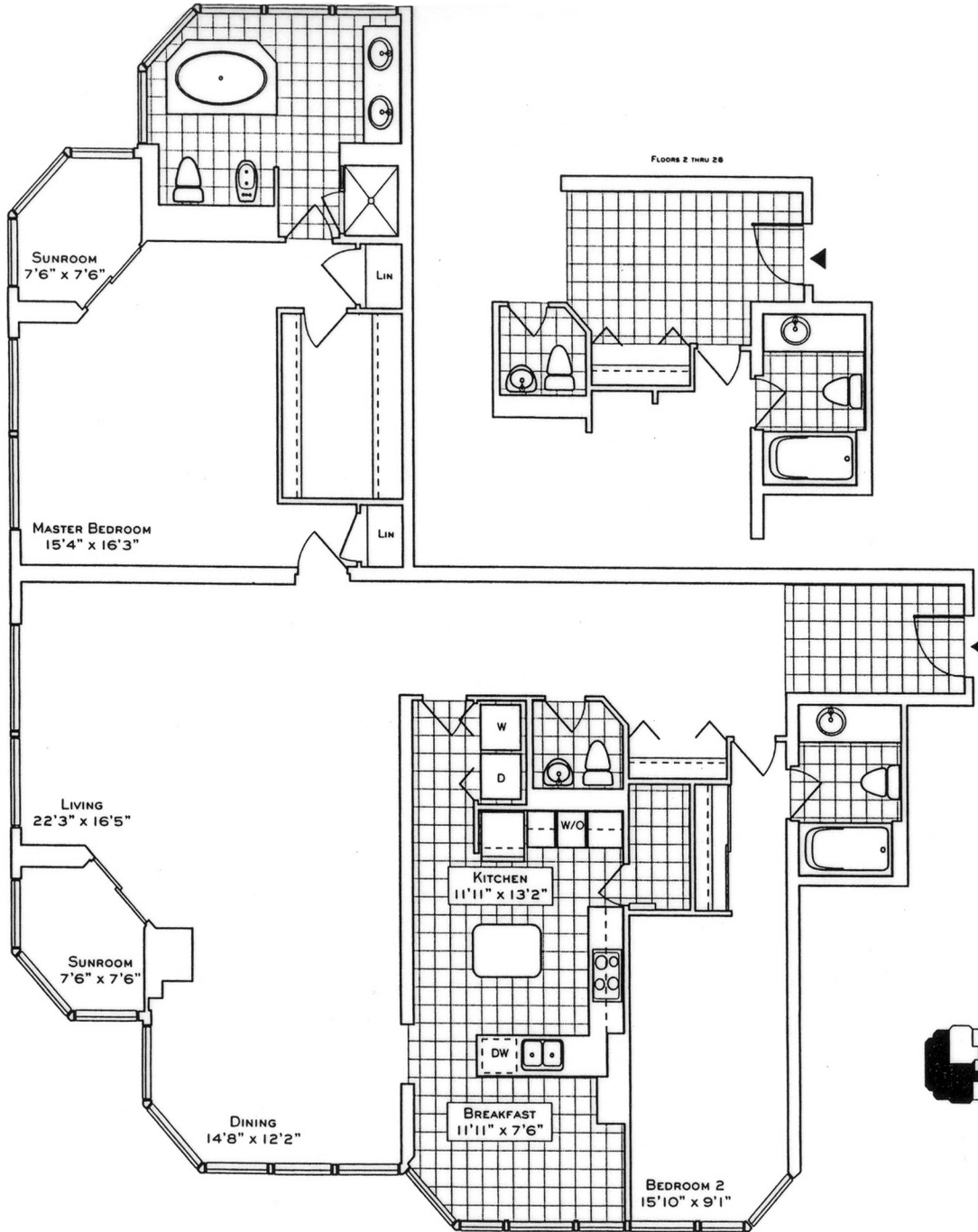
From the moment you step in, you will appreciate the uncompromising attention to detail in every room. Natural light floods the whole unit, which has floor to ceiling windows throughout. This is an ideal home for professional couples, who want the convenient and carefree lifestyle that a luxury condominium offers.





# FLOOR PLAN

# 1 PALACE PIER COURT SUITE 3006



## The Water Point

**SUITE 06**  
1985/2028 SQ. FT.  
(FLOORS 2 THRU 28/29 THRU 44)  
**SUITE 01**  
(REVERSE PLAN)  
1985 SQ. FT.  
(FLOORS 2 THRU 28)

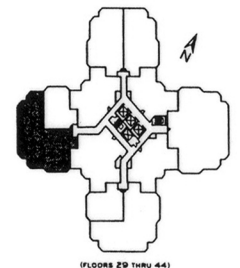
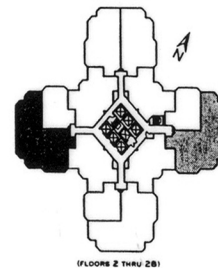
Your new home at Palace Place is about a million miles from the ordinary, offering a symbiotic lifestyle in a landmark building. From valet parking to the unsurpassed service of the concierge who, like the manager of a 5-star hotel, will cater to your every whim.

Play squash, swim, work-out or relax in a soothing whirlpool. The rooftop 'Lakeshore Club' offers an exclusive dining room, video theatre, and party facilities with 360° views of the city and lake that are truly breathtaking.

Additionally, there is a private shuttle service to and from downtown, a fully equipped business centre, tuck shop off the lobby and, for overnight visitors, guest suites.

Living at Palace Place, on your private peninsula overlooking Lake Ontario is an experience that can never, will never, be duplicated. Enjoy.

 **PALACE PLACE**



Plans, specifications and dimensions shown are approximations and are for illustrative purposes only and may not coincide with the existing site, or conditions. Plans may be modified by reviewing the site as well as the condominium plan registered on file. Actual usable floor space may vary from the stated floor area in accordance with OHSNY provisions. Plans shown are not to scale.

**ROYAL LePAGE**  
Royal LePage Real Estate Services Limited, Brokerage

Daiva Dalinda, Broker, and Luke Dalinda, Sales Representative  
Royal LePage Real Estate Services Ltd., Brokerage  
416 236 1871 [ldalinda@Dalinda.net](mailto:ldalinda@Dalinda.net)



*The information that has been written herein has been obtained from sources that have been deemed reliable. There has been no reason to doubt its accuracy, but, regretfully, it cannot be guaranteed. Royal LePage Real Estate Services Ltd., Brokerage. © DalindaTeam.com.*