

WELCOME TO PALACE PLACE  
**1 PALACE PIER COURT**  
 SUITE # 2302



*Palace Place features a modern mix of Oriental and Louis XV inspired furnishings and accessories.*



*Taking as its inspiration the legendary waterfront estates of the Gatsby era, Palace Place represents a chic and sophisticated view of condominium living, one without precedent in Toronto.*

*PALACE PLACE features every conceivable amenity, including valet parking, a security system, with a 24-hour concierge, guards, and video surveillance, signature services, guest suites, shuttle bus service, and a world-class health club, with a squash court, a racquetball court, a sauna room, an indoor pool, a recreation room, and a rooftop lounge. It is conveniently located, with easy access to major arteries, particularly Lakeshore Boulevard, the Gardiner Expressway, and the Queen Elizabeth Way. It is approximately a 5-minute drive to downtown Toronto and 15-minutes to the airport.*



**FOR SALE AT: \$515,000      MAINTENANCE:\$836.78**

**SPECIAL FEATURES**



- Suite 2302 features striking granite floors throughout, smooth ceilings, designer window coverings, pot lighting, a state-of-the-art kitchen, with granite counters, designer Aya cabinetry, top-of-the-line stainless steel appliances, including a Miele platinum dishwasher and a Kitchen Aid fridge, stove, cook top, and microwave, and a GE wine fridge.
- Suite 2302 also includes a full-size Whirlpool washer & dryer, a wood panel light feature in the living room, a wall light feature in the dining room, surround sound wiring in the living room, Kohler faucets in bathrooms, mosaic Italian tile in master ensuite, Space Age closet organizers, and an energy efficient Honeywell digital thermostat. One parking spot is included.

**EXCEEDING EXPECTATIONS**

DAIVA DALINDA  
Broker

Royal LePage Real Estate Services Limited, Brokerage

LUKE DALINDA  
Sales Representative

Royal LePage Real Estate Services Ltd., Brokerage    Tel. (416) 236-1871    Email: ldalinda@dalinda.net

*The information that has been written herein has been obtained from sources that have been deemed reliable. There has been no reason to doubt its accuracy, but, regretfully, it cannot be guaranteed. Royal LePage Real Estate Services Ltd., Brokerage. © DalindaTeam.com.*

WELCOME TO PALACE PLACE  
**1 PALACE PIER COURT**  
 SUITE # 2302



Breathtaking is the word that best describes Palace Place, which is the most prestigious, luxurious, and best managed waterfront condominium residence in Canada. Suite 2302 is a stunning condominium residence, with approximately 1,204 square feet of living space and an unobstructed view of the city and Lake Ontario.

**EXCEEDING EXPECTATIONS**

DAIVA DALINDA  
Broker

Royal LePage Real Estate Services Limited, Brokerage

LUKE DALINDA  
Sales Representative

Royal LePage Real Estate Services Ltd., Brokerage    Tel. (416) 236-1871    Email: ldalinda@dalinda.net



**F**rom the moment you step in, you will appreciate the uncompromising attention to detail in every room. Suite 2302 has been completely renovated for the discerning buyer, who appreciates quality workmanship and sophisticated styling. Natural light floods the whole unit, which has floor to ceiling windows throughout. This is an ideal home for professional couples, who want the convenient and carefree lifestyle that a luxury condominium offers.



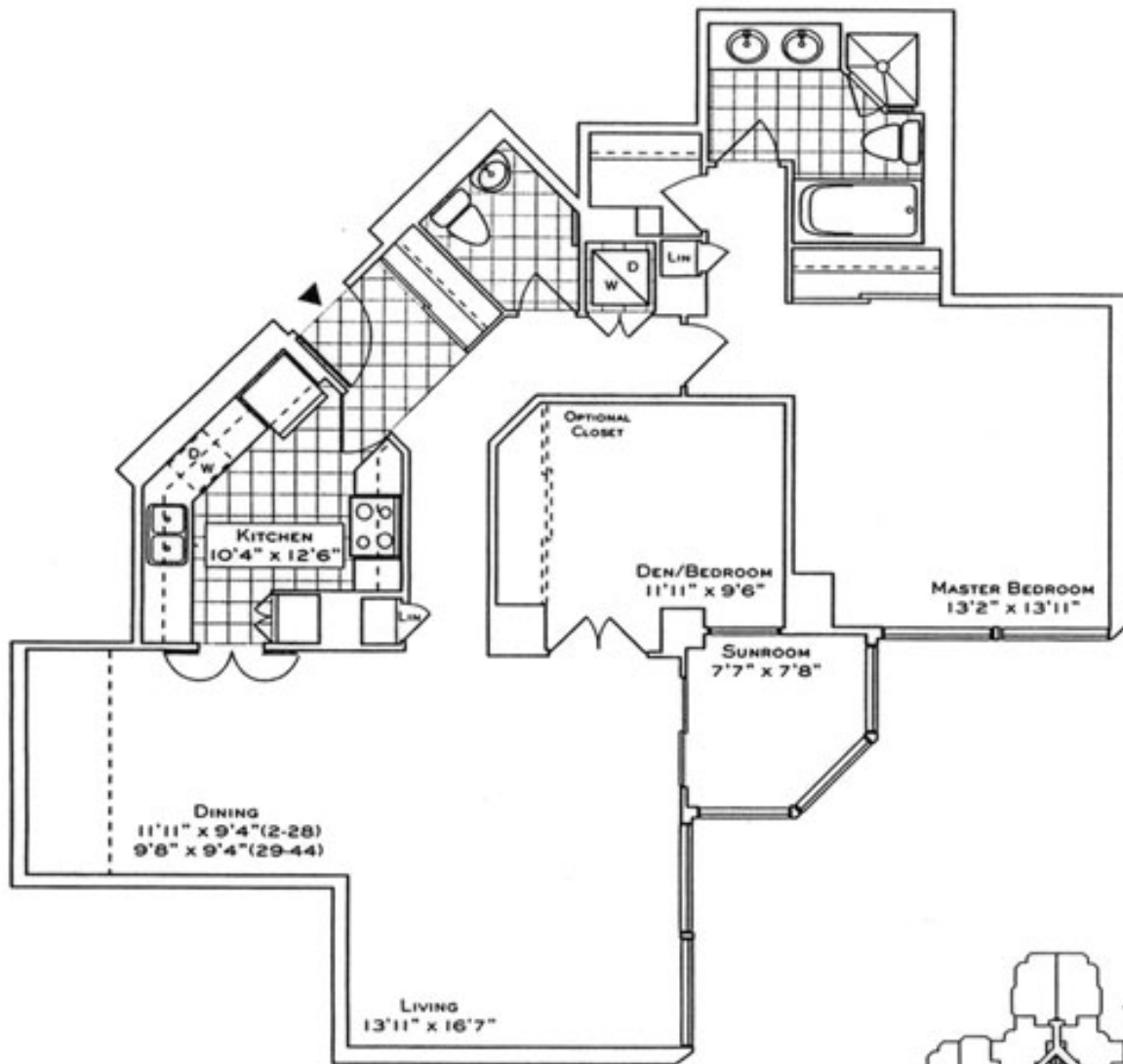
FLOOR PLAN

# 1 PALACE PIER COURT

SUITE 2302

## The Bridge Point

SUITE 02  
1204 SQ. FT.  
(FLOORS 2 THRU 28)  
1186 SQ. FT.  
(FLOORS 29 THRU 44)

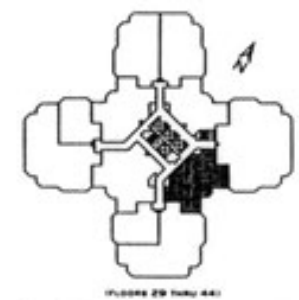
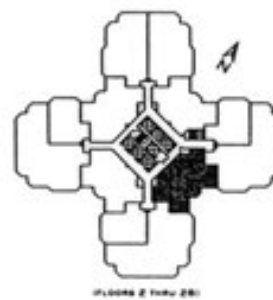


Your new home at Palace Place is about a million miles from the ordinary, offering a cybernetic lifestyle in a landmark building. From valet parking to the unsurpassed service of the concierge who, like the manager of a 5-star hotel, will cater to your every whim.

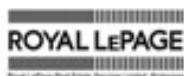
Play squash, swim, work-out or relax in a soothing whirlpool. The rooftop "Lakeshore Club" offers an exclusive dining room, video theater, and party facilities with 360° views of the city and lake that are truly breathtaking.

Additionally, there is a private shuttle service to and from downtown, a fully equipped business center, tack shop off the lobby and, for overnight visitors, guest suites.

Living at Palace Place, on your private peninsula overlooking Lake Ontario, is an experience that can never be duplicated. Enjoy.



These specifications and floorplans show an approximation and are for illustrative purposes only and may not conform with the zoning code or construction code and may be modified by requiring the seller to sell at the construction phase required in 40% actual results that occur over time from the start of the sale to completion with 100% completion. Please check on all details.



Daiva Dalinda, Broker, and Luke Dalinda, Sales Representative  
Royal LePage Real Estate Services Ltd., Brokerage  
416 236 1871 [ldalinda@Dalinda.net](mailto:ldalinda@Dalinda.net)

