



PALACE PLACE

1 Palace Pier Court, Suite 3902

WELCOME TO PALACE PLACE!

Breathtaking is the word that best describes Palace Place, which is the most prestigious and luxurious waterfront condominium residence in Canada. Suite 3902 is a magnificent condominium residence, with approximately 1,186 square feet of living space and an unobstructed view of the city and Lake Ontario. From the moment you step in, you will appreciate the uncompromising attention to detail in every room. Natural light floods the whole unit, which has floor to ceiling windows throughout. This is an ideal home for professional couples, who want the convenient and carefree lifestyle that a luxury condominium offers.

PALACE PLACE features every conceivable amenity, including valet parking, a security system, with a 24-hour concierge, guards, and video surveillance, signature services, guest suites, shuttle bus service, and a world-class health club, with a squash court, a racquetball court, a sauna room, an indoor pool, a recreation room, and a rooftop lounge. It is conveniently located, with easy access to major arteries, particularly Lakeshore Boulevard, the Gardiner Expressway, and the Queen Elizabeth Way. It is approximately a 5-minute drive to downtown Toronto and 15-minutes to the airport.



DAIVA DALINDA
Broker



LUKE DALINDA
Sales Representative



Royal LePage Real Estate Services Ltd., Brokerage Tel. (416) 236-1871 Email: ldalinda@dalinda.net



Watch Palace Place on



[www.YouTube.com/
PalacePlaceToronto](http://www.YouTube.com/PalacePlaceToronto)

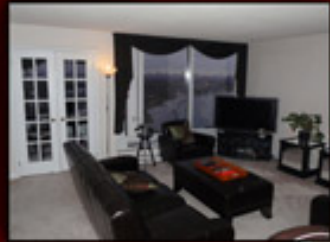


The information that has been written herein has been obtained from sources that have been deemed reliable. There has been no reason to doubt its accuracy, but, regrettably, it cannot be guaranteed. Royal LePage Real Estate Services Ltd., Brokerage. © Luke Dalinda.



PALACE PLACE

Floor Plan - 1,186 sq. ft.



The Bridge Point

SUITE 02
1204 SQ. FT.
1186 SQ. FT.
1186 SQ. FT.

You see here at Palace Place is also a unique
 with the the entire offering of a
 which is a beautiful building. There are park-
 ing in the surrounding area of the building
 who like the manager of a large hotel will come
 to your eye view.
 The space, with, with the idea is coming
 changed the entire building that offers
 an entire living area, with the idea of your
 building. We have it all up and for the
 we are building.
 Additionally, there is a great double garage to
 and that building, with support building
 comes with the idea of the building and for a great
 value, great value.
 Living at Palace Place is one great property
 including Lake Ontario, in an impressive area
 we are sure will come to the highest level.

For sale at: \$449,900
 Maintenance fees: \$761.49
 Taxes: \$3,260.99 (2009)

