



PALACE PLACE

1 Palace Pier Court, Suite 3010

WELCOME TO PALACE PLACE!

Breathtaking is the word that best describes Palace Place, which is the most prestigious and luxurious waterfront condominium residence in Canada. Suite 3010 is a magnificent condominium residence, with approximately 1,395 square feet of living space and a brilliant view of High Park, Grenadier Pond, the northern city skyline, and the Humber Bay. From the moment you step in, you will appreciate the uncompromising attention to detail in every room. Natural light floods the whole unit, which has floor to ceiling windows throughout. This is an ideal home for professional couples, who want the convenient and carefree lifestyle that a luxury condominium offers.

PALACE PLACE features every conceivable amenity, including valet parking, a security system, with a 24-hour concierge, guards, and video surveillance, signature services, guest suites, shuttle bus service, and a world-class health club, with a squash court, a racquetball court, a sauna room, an indoor pool, a recreation room, and a rooftop lounge. It is conveniently located, with easy access to major arteries, particularly Lakeshore Boulevard, the Gardiner Expressway, and the Queen Elizabeth Way. It is approximately a 5-minute drive to downtown Toronto and 15-minutes to the airport.

For Sale at: \$389,000
Maintenance: \$857.45
Taxes: \$2,703 (2007)

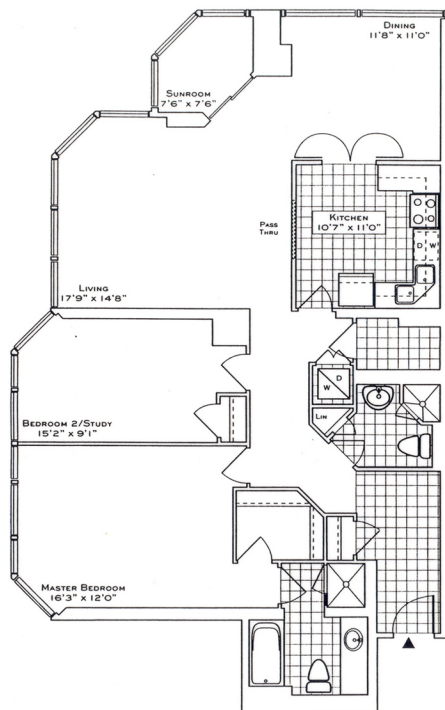
Contact:
DAIVA DALINDA - BROKER
Royal LePage
Real Estate Services Ltd., Brokerage
416.236.1871
ddalinda@DalindaTeam.com





PALACE PLACE

Floor Plan - 1,395 sq. ft.



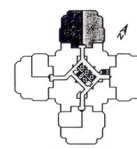
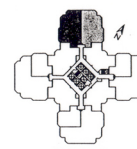
The Park Point

SUITE 09
1388/1387 SQ. FT.
(FLOOR 2 TWR 28/29 TWR 44)

SUITE 10
1388/1395 SQ. FT.
(FLOOR 2 TWR 28/29 TWR 44)

Your new home at Palace Place is about a million miles from the ordinary, offering a unique lifestyle in a landmark building. From valet parking to the unsurpassed service of the concierge who like the manager of a 5-star hotel will come to your every whim. Play squash, swim, work out or relax in a smoking whirlpool. The on-site "Lakeside Club" offers an exclusive dining room, video theatre, and party facilities with 360° views of the city and lake that are truly breathtaking. Additionally, there is a private shuttle service to and from downtown, a fully equipped business centre, lock shop off the lobby and for overnight visitors, guest suites. Living at Palace Place, on your private grounds overlooking Lake Ontario, is an experience that can never be duplicated. Enjoy.

PALACE PLACE



The information that has been written herein has been obtained from sources that have been deemed reliable. There has been no reason to doubt its accuracy, but, regretfully, it cannot be guaranteed. Royal LePage Real Estate Services Ltd., Brokerage. © Luke Dalinda