



# PALACE PLACE, SUITE 703

PRESENTED BY LUKE DALINDA



“WHATEVER MAY BE SAID OF PALACE PLACE,  
YOU MAY SET IT DOWN AS AN UNDERSTATEMENT.  
NOT SIMPLY AN ADDRESS, PALACE PLACE IS A DESTINATION. PALACE  
PLACE OFFERS THE KIND OF LIVING THAT YOU HAVE NEVER SEEN  
BEFORE.”



Style and privilege are words that best describe Palace Place, which is the most prestigious, luxurious, and best managed waterfront condominium residence in Canada.

Born of the ideals from the legendary waterfront estates of the Gilded Age, Palace Place represents a chic and sophisticated view of condominium living, one without precedent in Toronto.

Housing 504 suites, Palace Place soars into Toronto's skyline with 47-storeys that have been enclosed in a spectacular glass façade.

## THE MOST SOUGHT-AFTER SUITE AT PALACE PLACE...

Suite 703 is a highly sought-after, immaculate condominium residence, with approximately 1,985 square feet of living space, 2-bedrooms, and the most enchanting views of the lake, the city skyline, and High Park.















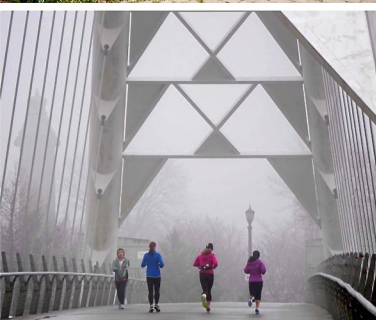
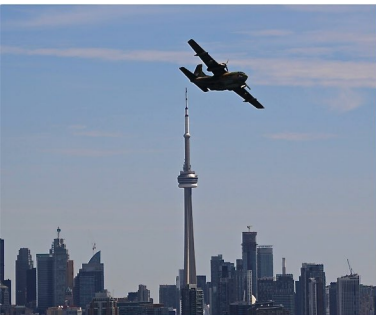
















Palace Place features every conceivable amenity, including valet parking, a security system, with a 24-hour concierge, guards, and video surveillance, signature services, guest suites, shuttle bus service, and a world-class health club, with brand new women's and men's spas, a squash court, a racquetball court, a sauna room, an indoor pool, a recreation room, and a rooftop lounge.





PALACE PLACE,  
1 PALACE PIER COURT,  
SUITE 703



Learn more about Palace Place by ordering,  
**PALACE PLACE: THE BOOK**  
[dalinda.net/PalacePlaceBook](http://dalinda.net/PalacePlaceBook)



## EXCEEDING EXPECTATIONS

Luke Dalinda, Sales Representative  
Royal LePage Real Estate Services Ltd., Brokerage  
W: 416 236 1871 C: 416 725 7170  
[LDalinda@Dalinda.net](mailto:LDalinda@Dalinda.net)



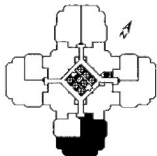
Royal LePage Real Estate Services Limited, Brokerage

**WRITTEN, PRODUCED, AND PRESENTED BY LUKE DALINDA.**

**THE INFORMATION THAT HAS BEEN WRITTEN HEREIN HAS BEEN OBTAINED FROM SOURCES THAT HAVE BEEN DEEMED RELIABLE. THERE HAS BEEN NO REASON TO DOUBT ITS ACCURACY, BUT, REGRETFULLY, IT CANNOT BE GUARANTEED. SOME PHOTOS HAVE BEEN TAKEN FROM OTHER AREAS. PHOTOS ARE OF A PREVIOUS STAGING. THIS IS NOT INTENDED TO SOLICIT CLIENTS THAT ARE UNDER CONTRACT WITH A BROKERAGE. ALL RIGHTS RESERVED. THIS BOOK, IN ALL OR IN PART, IS NOT TO BE REPRODUCED, STORED, RENTED, EXHIBITED, DISTRIBUTED, OR TRANSMITTED IN ANY FORM WITHOUT PERMISSION THAT HAS BEEN WRITTEN BY, AND RECEIVED FROM, LUKE DALINDA. UNAUTHORIZED USE IS PROHIBITED BY LAW. © LUKE DALINDA**

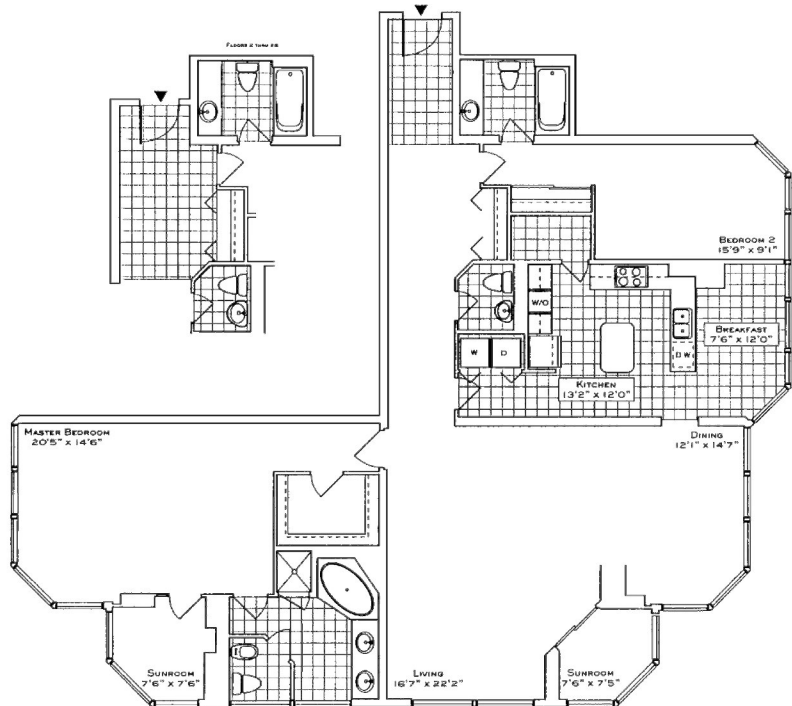
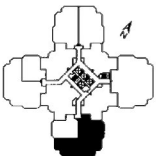
## SUITE 03 - 1985 Sq. Ft.

(FLOORS 2 THRU 28)



## SUITE 03 - 2028 Sq. Ft.

(FLOORS 29 THRU 44)







LUKE DALINDA PRESENTS

PALACEPLACE

[PALACEPLACE.COM](http://PALACEPLACE.COM)