



# GRAND HARBOUR, PENTHOUSE 1501

PRESENTED BY THE DALINDA TEAM



BREATHTAKING IS THE WORD THAT BEST DESCRIBES GRAND HARBOUR,  
WHICH IS AN ARCHITECTURALLY RENOWNED, LUXURIOUSLY  
SPECTACULAR WATERFRONT CONDOMINIUM RESIDENCE CONSISTING OF  
TWO BUILDINGS AND APPROXIMATELY THIRTY-NINE TOWNHOUSES.







## ONE OF THE LARGEST CONDOMINIUM RESIDENCES ON THE WATERFRONT!

Penthouse 1501 is a spectacular condominium residence, with 3,430 square feet of luxury living, plus 1,497 square feet of enchanting outdoor spaces, offering phenomenal water vistas in every direction. This suite features expansive formal rooms, two gas fireplaces, and a fully appointed chef's kitchen, with gas cooktop, breakfast room, and a walkout to a massive terrace, with a gas barbecue. This rare, one of a kind home is your 'bungalow in the sky' and an entertainer's paradise!

































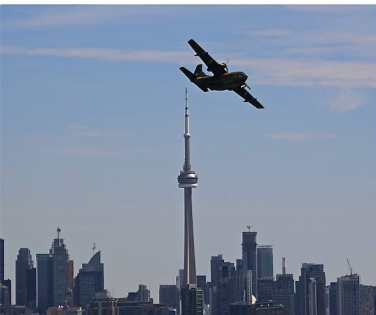














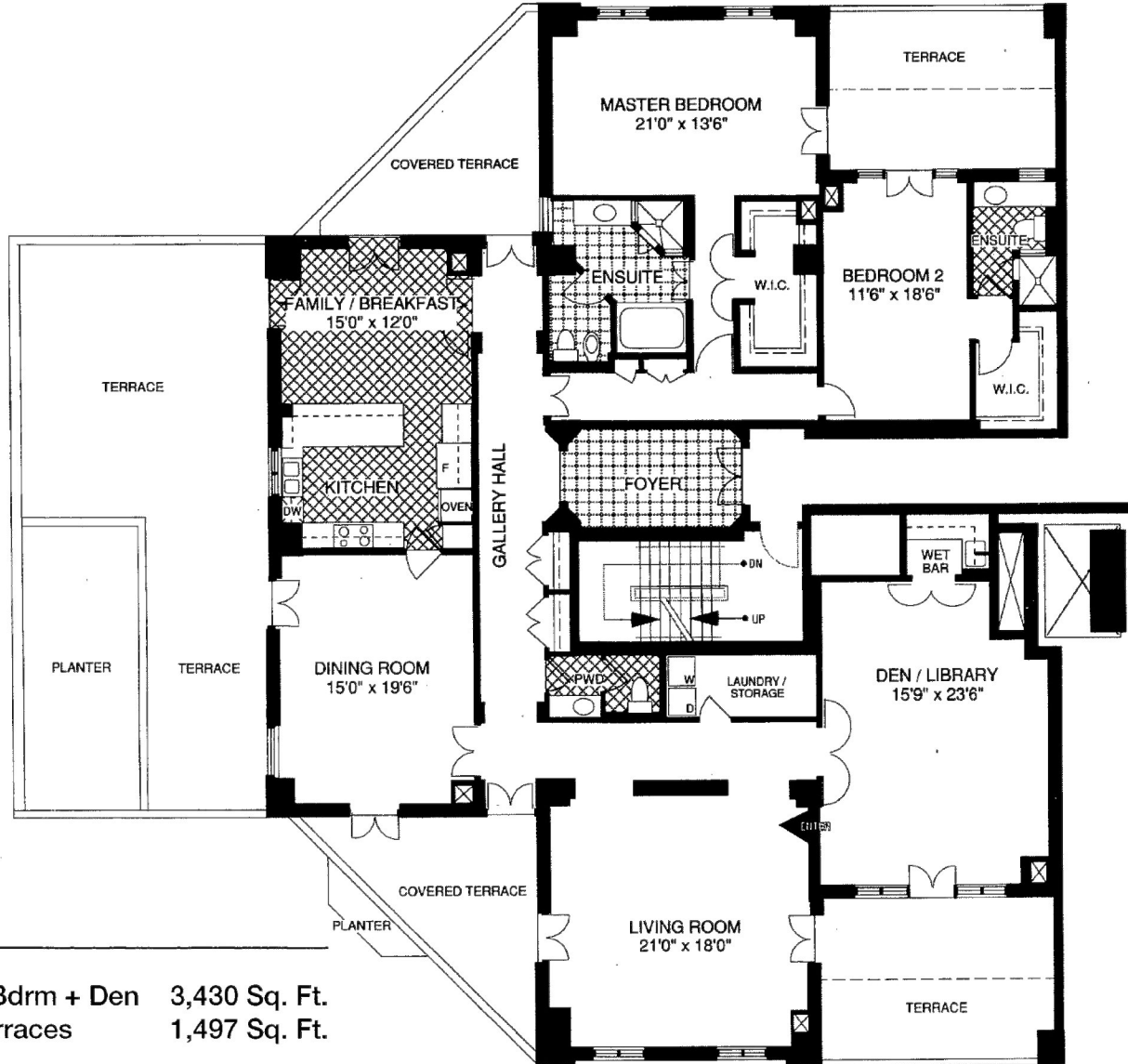




GRAND HARBOUR features many amenities, including concierge services, 1 guest suite, and a health club, with a squash court, a sauna room, an indoor pool, a party room, with catering kitchen, and a lounge. It is conveniently located, with easy access to major arteries, particularly Lake Shore Boulevard, the Gardiner Expressway, and the Queen Elizabeth Way. It is approximately a 10-minute drive to downtown Toronto and 10-minutes to the airport.







2 Bdrm + Den    3,430 Sq. Ft.  
Terraces        1,497 Sq. Ft.









# SPECIAL FEATURES

Pot lighting  
Designer light fixtures  
Hardwood floors throughout  
9-foot ceilings  
Crown mouldings  
Two gas fireplaces  
5 terraces  
Built-in wet bar behind sliding door in family room  
Gas cooktop  
Stainless steel fridge  
New stainless steel built-in dishwasher  
Built-in wall oven and microwave  
Granite counters and kitchen floors  
Custom cabinetry in breakfast room  
Full size washer and dryer  
Roughed-in speakers  
Custom stainless steel pillars in foyer  
Marble floor in foyer  
Newly renovated 3pc in second bedroom  
Window coverings



2287 LAKE SHORE BW,  
PENTHOUSE 1501

	<b>EXCEEDING EXPECTATIONS</b>	
<b>DAIVA DALINDA</b> Broker		<b>LUKE DALINDA</b> Sales Representative
Royal LePage Real Estate Services Ltd., Brokerage    Tel. (416) 236-1871    Email: <a href="mailto:ddalinda@dalinda.net">ddalinda@dalinda.net</a>		

WRITTEN, PRODUCED, AND PRESENTED BY THE DALINDA TEAM.  
THE INFORMATION THAT HAS BEEN WRITTEN HEREIN HAS BEEN OBTAINED FROM SOURCES THAT HAVE BEEN DEEMED RELIABLE. THERE HAS BEEN NO REASON TO DOUBT ITS ACCURACY, BUT, REGRETFULLY, IT CANNOT BE GUARANTEED. SOME PHOTOS HAVE BEEN TAKEN FROM OTHER LOCATIONS. THIS IS NOT INTENDED TO SOLICIT CLIENTS THAT ARE UNDER CONTRACT WITH A BROKERAGE. ALL RIGHTS RESERVED. THIS BOOK, IN ALL OR IN PART, IS NOT TO BE REPRODUCED, STORED, RENTED, EXHIBITED, DISTRIBUTED, OR TRANSMITTED IN ANY FORM WITHOUT PERMISSION THAT HAS BEEN WRITTEN BY, AND RECEIVED FROM, THE DALINDA TEAM. UNAUTHORIZED USE IS PROHIBITED BY LAW.  
© DALINDA TEAM





