



# PALACE PLACE, SUITE 4206

PRESENTED BY LUKE DALINDA



“WHATEVER MAY BE SAID OF PALACE PLACE,  
YOU MAY SET IT DOWN AS AN UNDERSTATEMENT.  
NOT SIMPLY AN ADDRESS, PALACE PLACE IS A DESTINATION. PALACE  
PLACE OFFERS THE KIND OF LIVING THAT YOU HAVE NEVER SEEN  
BEFORE.”





Style and privilege are words that best describe Palace Place, which is the most prestigious, luxurious, and best managed waterfront condominium residence in Canada.

Born of the ideals from the legendary waterfront estates of the Gilded Age, Palace Place represents a chic and sophisticated view of condominium living, one without precedent in Toronto.

Housing 504 suites, Palace Place soars into Toronto's skyline with 47-storeys that have been enclosed in a spectacular glass façade.









## A FUSION OF STYLE AND PRIVILEGE IN A LANDMARK BUILDING...

Suite 4206 is a visually arresting condominium residence, with approximately 2,028 square feet of luxury living space, 2-bedrooms, and the most enchanting views of the lake, the city, and the Humber Bay Shores parklands. This suite has been meticulously renovated for the discerning buyer, who appreciates quality workmanship and sophisticated styling.























































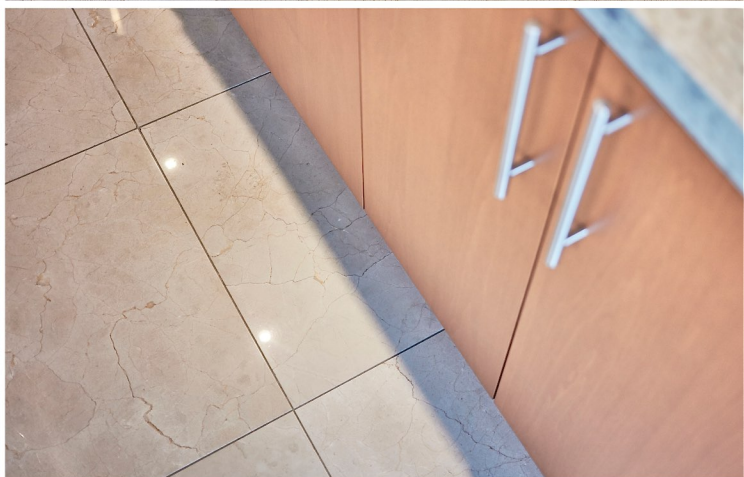
















# SPECIAL FEATURES

METICULOUS ATTENTION TO DETAIL AND UNPARALLELED CRAFTSMANSHIP ARE  
HALLMARKS OF THIS STUNNING SUITE.

- MARBLE HALLWAY & KITCHEN FLOORS
    - LAUZON HARDWOOD FLOORS
  - GRANITE KITCHEN COUNTERS
    - CROWN MOULDINGS
    - SMOOTH CEILINGS
  - CUSTOM CRAFTED KITCHEN & CABINETS
  - PREMIUM ELECTROLUX STAINLESS STEEL APPLIANCES
    - GROHE & CABANO FAUCETS
-





Palace Place features every conceivable amenity, including valet parking, a security system, with a 24-hour concierge, guards, and video surveillance, signature services, guest suites, shuttle bus service, and a world-class health club, with brand new women's and men's spas, a squash court, a racquetball court, a sauna room, an indoor pool, a recreation room, and a rooftop lounge.







PALACE PLACE,  
1 PALACE PIER COURT,  
SUITE 4206



Learn more about Palace Place by ordering,  
**PALACE PLACE: THE BOOK**  
[dalinda.net/PalacePlaceBook](http://dalinda.net/PalacePlaceBook)



## EXCEEDING EXPECTATIONS

Luke Dalinda, Sales Representative  
Royal LePage Real Estate Services Ltd., Brokerage  
W: 416 236 1871 C: 416 725 7170  
[LDalinda@Dalinda.net](mailto:LDalinda@Dalinda.net)

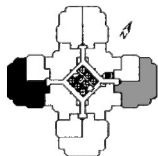


WRITTEN, PRODUCED, AND PRESENTED BY LUKE DALINDA.

THE INFORMATION THAT HAS BEEN WRITTEN HEREIN HAS BEEN OBTAINED FROM SOURCES THAT HAVE BEEN DEEMED RELIABLE. THERE HAS BEEN NO REASON TO DOUBT ITS ACCURACY, BUT, REGRETFULLY, IT CANNOT BE GUARANTEED. SOME PHOTOS HAVE BEEN TAKEN FROM OTHER AREAS. THIS IS NOT INTENDED TO SOLICIT CLIENTS THAT ARE UNDER CONTRACT WITH A BROKERAGE. ALL RIGHTS RESERVED. THIS BOOK, IN ALL OR IN PART, IS NOT TO BE REPRODUCED, STORED, RENTED, EXHIBITED, DISTRIBUTED, OR TRANSMITTED IN ANY FORM WITHOUT PERMISSION THAT HAS BEEN WRITTEN BY, AND RECEIVED FROM, LUKE DALINDA. UNAUTHORIZED USE IS PROHIBITED BY LAW. © LUKE DALINDA

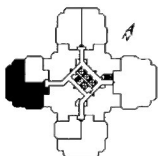
## SUITE 06 - 1985/2028 Sq. Ft.

(FLOORS 2 THRU 28/29 THRU 44)

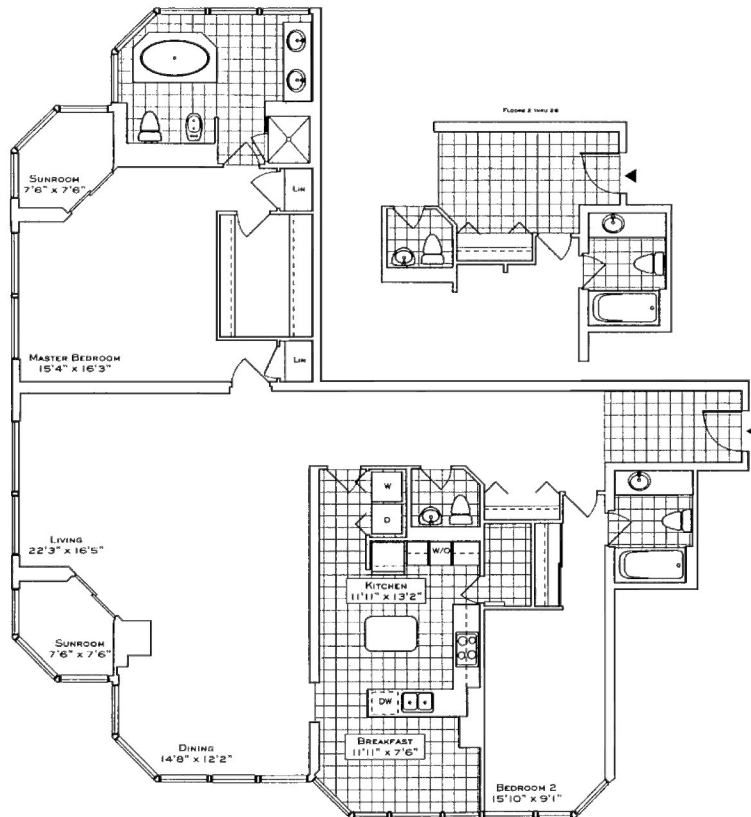


## SUITE 01 - 1985 Sq. Ft.

(FLOORS 2 THRU 28 - REVERSE PLAN)



© LUKE DALINDA









LUKE DALINDA PRESENTS

PALACEPLACE

PALACEPLACE.COM