

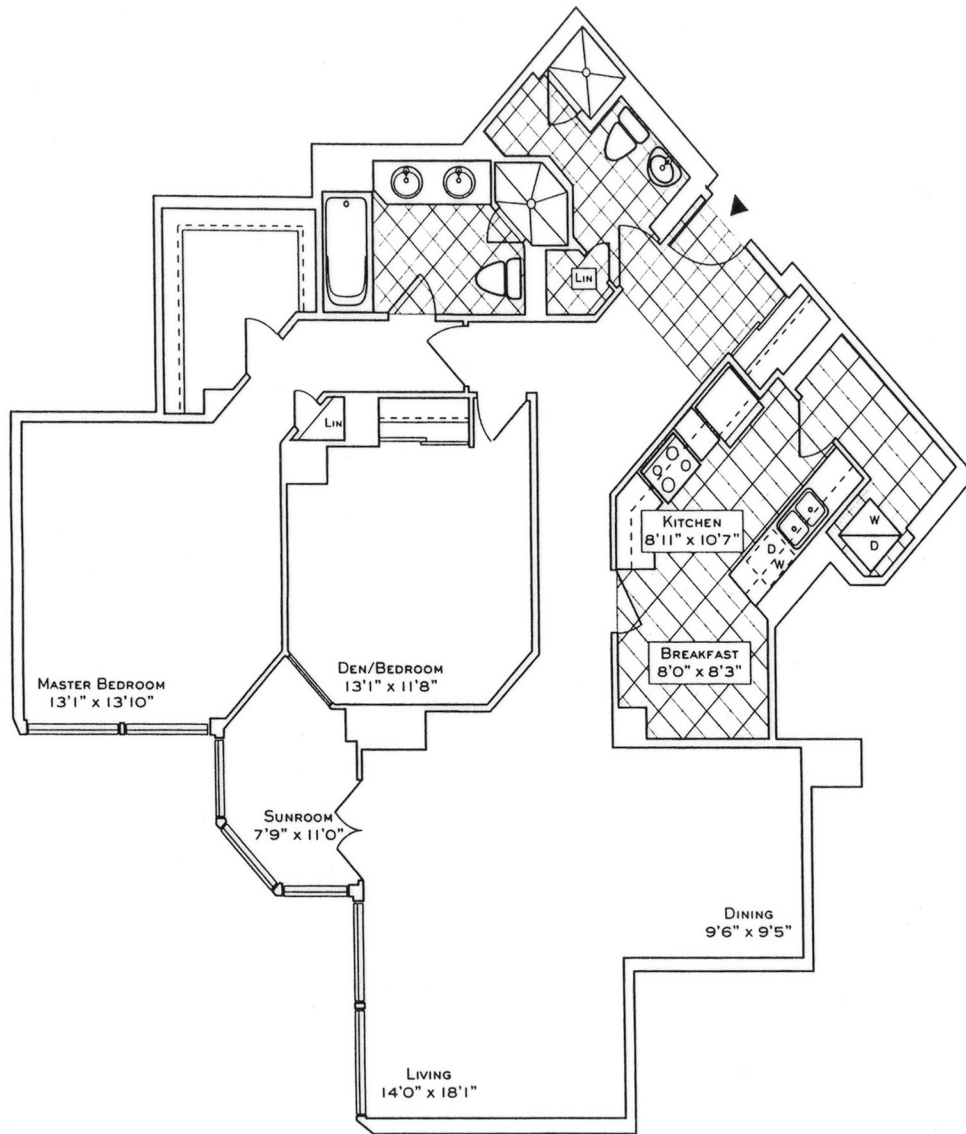
FLOOR PLAN

1 PALACE PIER COURT

SUITE 3105

The
Vista
Point

SUITE 05
1491 SQ. FT.
(FLOORS 29 THRU 44)



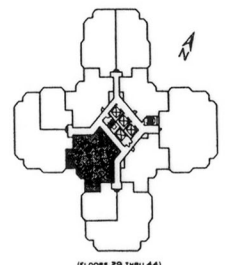
Your new home at Palace Place is about a million miles from the ordinary, offering a sybaritic lifestyle in a landmark building. From valet parking to the unsurpassed service of the concierge who, like the manager of a 5-star hotel, will cater to your every whim.

Play squash, swim, work-out or relax in a soothing whirlpool. The rooftop "Lakeshore Club" offers an exclusive dining room, video theatre, and party facilities with 360° views of the city and lake that are truly breathtaking.

Additionally, there is a private shuttle service to and from downtown, a fully equipped business centre, tack shop off the lobby and, for overnight visitors, guest suites.

Living at Palace Place, on your private peninsula overlooking Lake Ontario, is an experience that can never will never be duplicated. Enjoy.

 PALACE PLACE



(FLOORS 29 THRU 44)

Plans, specifications and dimensions shown are approximate and are for illustrative purposes only and may not coincide with the existing plans or construction. Extra area may be needed by increasing the size or width of the construction plans represented on this. Actual usable floor space may vary from the stated floor area in accordance with OCEAN guidelines. Plans shown are not to scale.



Luke Dalinda, Sales Representative
Royal LePage Real Estate Services Ltd., Brokerage
416 236 1871 ldalinda@Dalinda.net



The information that has been written herein has been obtained from sources that have been deemed reliable. There has been no reason to doubt its accuracy, but, regretfully, it cannot be guaranteed. Royal LePage Real Estate Services Ltd., Brokerage. © DalindaTeam.com.