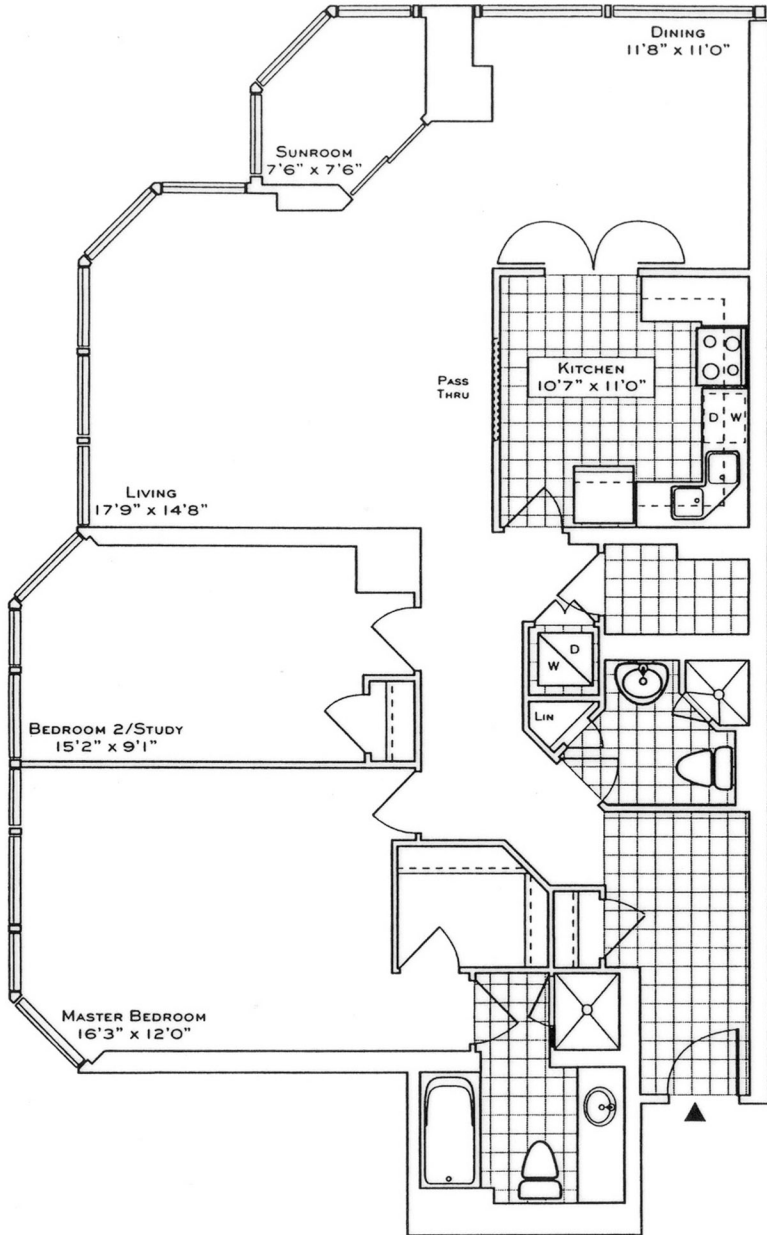


FLOOR PLAN

# 1 PALACE PIER COURT

SUITE 3410



## The Park Point

SUITE 09  
1388/1387 SQ. FT.  
(FLOORS 2 THRU 28/29 THRU 44)

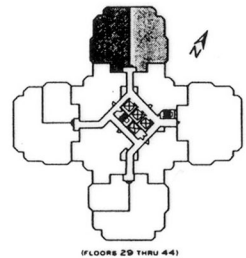
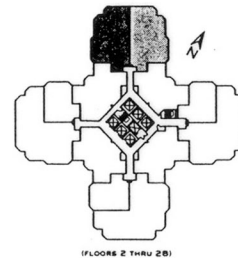
SUITE 10  
(REVERSE PLAN)  
1388/1395 SQ. FT.  
(FLOORS 2 THRU 28/29 THRU 44)

Your new home at Palace Place is about a million miles from the ordinary, offering a sybaritic lifestyle in a landmark building. From valet parking to the unsurpassed service of the concierge who, like the manager of a 5-star hotel, will cater to your every whim.

Play squash, swim, work-out or relax in a soothing whirlpool. The rooftop 'Lakeshore Club' offers an exclusive dining room, video theatre, and party facilities with 360° views of the city and lake that are truly breathtaking.

Additionally, there is a private shuttle service to and from downtown, a fully equipped business centre, tuck shop off the lobby and, for overnight visitors, guest suites.

Living at Palace Place, on your private peninsula overlooking Lake Ontario, is an experience that can never, will never, be duplicated. Enjoy.



Photo, specifications and distribution drawings are approximations and are for illustrative purposes only and may not coincide with the existing conditions or construction. Buyer must verify by inspecting the suite as well as the construction plans registered on title before making their purchase. Buyer must verify from the stated floor area in accordance with OMBLBY guidelines. Plans shown are not to scale.



Luke Dalinda, Sales Representative  
Royal LePage Real Estate Services Ltd., Brokerage  
416 236 1871 | [ldalinda@Dalinda.net](mailto:ldalinda@Dalinda.net)



The information that has been written herein has been obtained from sources that have been deemed reliable. There has been no reason to doubt its accuracy, but, regretfully, it cannot be guaranteed. Royal LePage Real Estate Services Ltd., Brokerage. © DalindaTeam.com.