



DALINDA.COM

1514 PRINCETON CRESCENT

PRESENTED BY LUKE DALINDA & LEIDY MORASKY

Royal LePage Real Estate Services Ltd., Brokerage













MODERN LIVING AMPLIFIED

This home is a sophisticated, contemporary 4,403 total square foot, 4+1-bedroom, 4-bath luxury residence that is located in the heart of Oakville on a lush, pie-shaped lot that offers an enchanting in-ground pool.

Impeccably renovated for the discerning buyer, who seeks unmatched style and the latest high-end finishes, this showpiece by renowned H&H Improvement elevates modern living.



















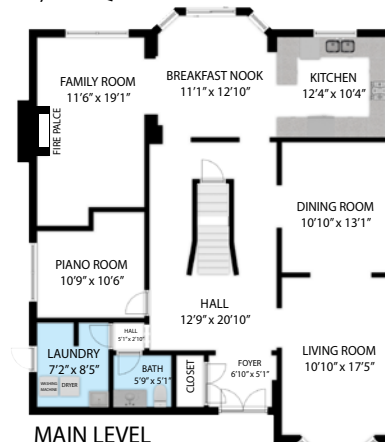
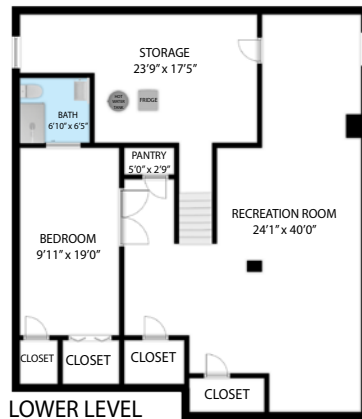








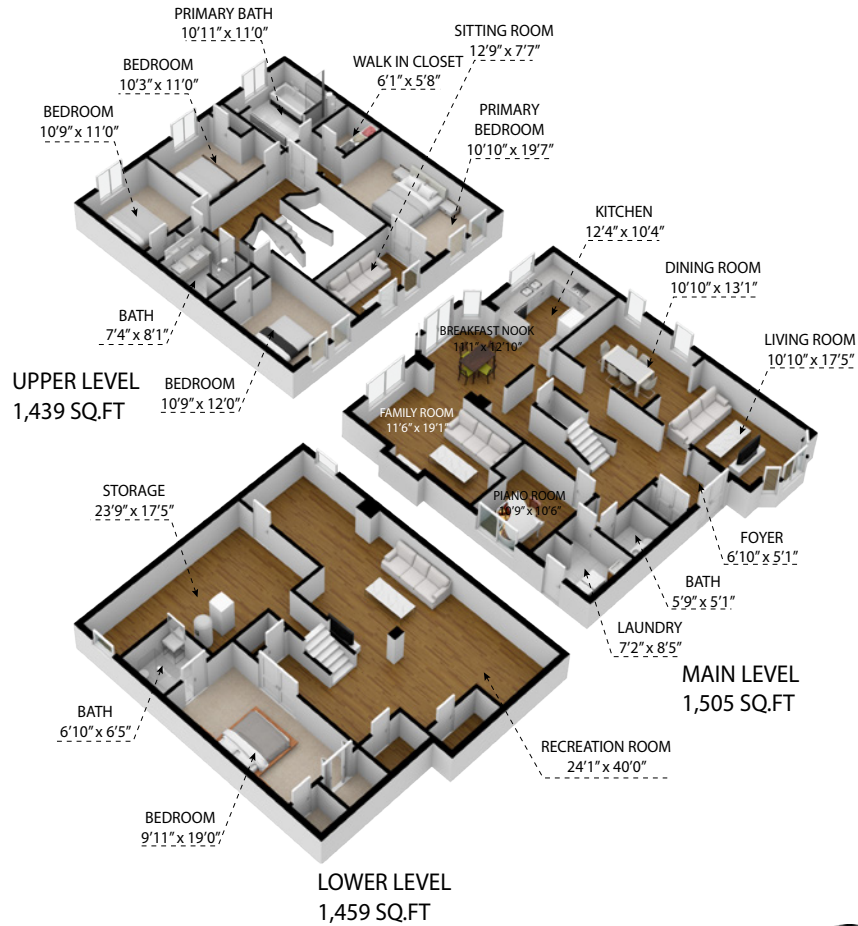




1514 Princeton Crescent, Oakville L6H 4H4
TOTAL APPROX. FLOOR AREA 4,403 SQ.FT

Floor plans and measurements provided are approximate and may not be 100% accurate. Floor plans are for advertising usage only and are not suitable for architecture or construction. We provide cost-effective services for property owners, managers, facility managers, real estate professionals, architects, space planners and interior designers, or any company which would like to verify their lease space size. Clients are responsible for verification and home values should not be set solely based on the floor plans





1514 Princeton Crescent, Oakville L6H 4H4

TOTAL APPROX. FLOOR AREA 4,403 SQ.FT

Floor plans and measurements provided are approximate and may not be 100% accurate. Floor plans are for advertising usage only and are not suitable for architecture or construction.

We provide cost-effective services for property owners, managers, facility managers, real estate professionals, architects, space planners and interior designers, or any company which would like to verify their lease space size. Clients are responsible for verification and home values should not be set solely based on the floor plans





LUKE DALINDA & LEIDY MORASKY

Realtors

Royal LePage Real Estate Services Ltd., Brokerage

Luke: 416.725.7170 | Leidy: 647-237-1317

Office: 416.236.1871

Luke: **LDalinda@Dalinda.net**

Leidy: **LMorasky@DalindaTeam.net**

For more photos and details go to:

DALINDA.COM

LOT SIZE: 32.34 X 154.44 FEET, PIE-SHAPED, NORTH 116.79, REAR 95.31 FEET



DALINDA TEAM
TOP 1% IN CANADA

DAIVA DALINDA, BROKER | VALENTINA MORASKY, REALTOR
LUKE DALINDA, REALTOR | ALEXA KOSTUK, SALES REALTOR
LEIDY MORASKY, REALTOR

Disclaimer: Written, produced, and presented by Luke Dalinda.

The information that has been written herein has been obtained from sources that have been deemed reliable. There has been no reason to doubt its accuracy, but, regrettably, it cannot be guaranteed. Some photos have been taken from other areas. This is not intended to solicit clients that are under contract with a brokerage. All rights reserved. This book, in all or in part, is not to be reproduced, stored, rented, exhibited, distributed, or transmitted in any form without permission that has been written by, and received from, Luke Dalinda. Unauthorized use is prohibited by law. © Luke Dalinda

*Top 1% in Canada, such achievement has been based on the gross, closed commissions that had been collected by the Dalinda Team in 2018, 2019, and 2021 from Royal LePage for teams of 5 or under.

The #1 Top Selling Realtor in Humber Bay Shores (W06, Condos), such achievement has been based on the total combined units and the total selling dollar volume that had been sold from January 1, 2017 to December 31, 2021 from TREB MLS data that had been analyzed by independent third party, RE Stats.*The #1 Top Selling Realtor at Palace Place, such achievement has been based on the number of sales that had been sold from 2010 to 2021 from TREB MLS data.