

FLOOR PLAN

1 PALACE PIER COURT

SUITE 4301

The City Point

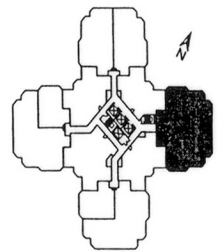
SUITE 01
2836 SQ. FT.
(FLOORS 29 THRU 44)

Your new home at Palace Place is about a million miles from the ordinary, offering a vibrant lifestyle in a landmark building. From valet parking to the unsurpassed service of the concierge who, like the manager of a 5-star hotel, will cater to your every whim.

Play squash, swim, work-out or relax in a soothing whirlpool. The rooftop "Lakeshore Club" offers an exclusive dining room, video theatre and party facilities with 360° views of the city and lake that are truly breathtaking.

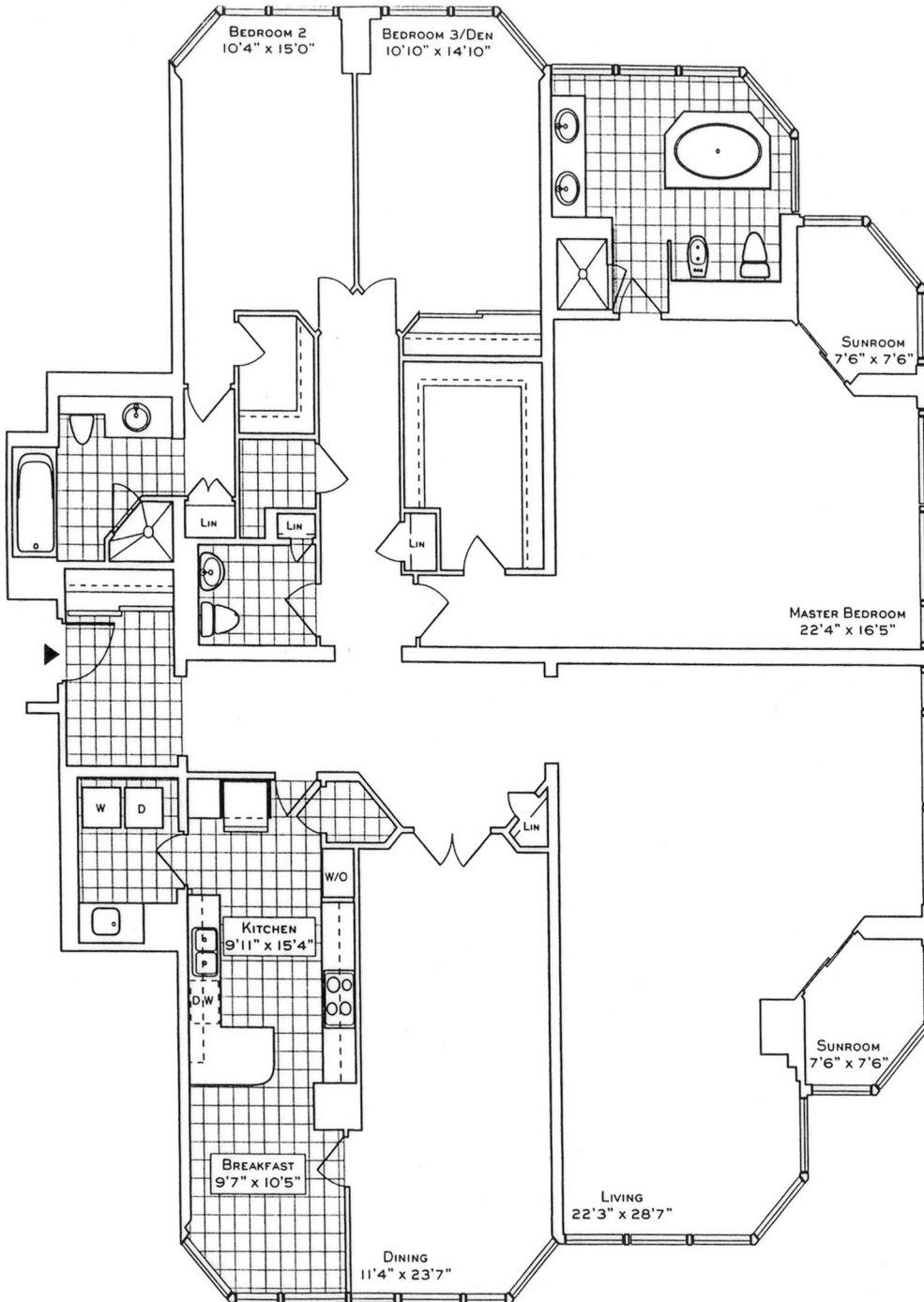
Additionally, there is a private shuttle service to and from downtown, a fully equipped business centre, tuck shop off the lobby and, for overnight visitors, guest suites.

Living at Palace Place, on your private peninsula overlooking Lake Ontario, is an experience that can never, will never, be duplicated. Enjoy.



(FLOORS 29 THRU 44)

Plan, specifications and dimensions shown are approximate and are for illustrative purposes only and may not coincide with the existing site or construction. Buyer must verify by inspecting the site as well as the construction plans prepared on this lot and verify floor space and any other material floor area in accordance with ONZS'7 guidelines. Plans shown are not to scale.



Luke Dalinda, Sales Representative
 Royal LePage Real Estate Services Ltd., Brokerage
 416 236 1871 LDalinda@Dalinda.net

