

25A

ELFORD BLVD.

PRESENTED BY LUKE DALINDA















A FUSION OF STYLE AND PRIVILEGE...

This home is a visually arresting, custom-built 2,928 total square foot, 3-bedroom luxury residence in the Sunnylea area that has been thoughtfully built using the finest materials, refined finishes, one-of-a-kind details, and quality craftsmanship that have all been beautifully combined to create contemporary west coast appeal. This spectacular residence was built with a Tarion Warranty.





































wash
dry
fold
repeat.

























HISTORY

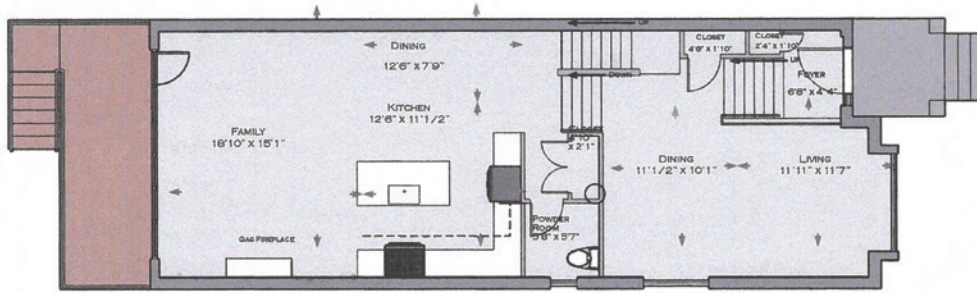
This residence is located in the Sunnylea area, one of Toronto's finest neighborhoods. The Sunnylea neighborhood had been founded and built in 1930, but its fruitful history had begun with Alexander Thompson, who had purchased two hundred acres of land after his discharge from the Kings Rangers in 1803.

The Thompson lands had been renowned for its thriving apple, pear, cherry, and plum orchards. Toward the end of the 1800's, other farmers had moved to Sunnylea, and they had cultivated lush market gardens of fruits and vegetables. Some of these old Sunnylea farmhouses have stood the test of time, and they can be found on both Prince Edward Drive and on Islington Avenue.

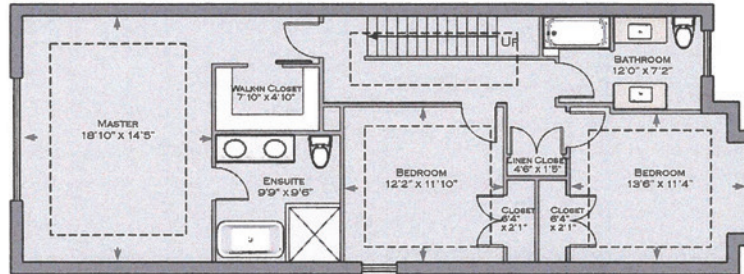
Sunnylea boasts some of Toronto's best shopping and dining destinations, the best schools, and quick travel times to the downtown core and the airport, via car or public transit.

FLOOR PLANS

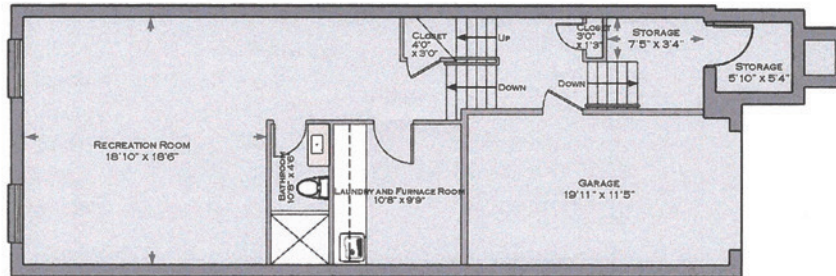
LOT SIZE: 27.49 SF. x 147.93 SF
2278 SF WITH 650 SF LOWER LEVEL



MAIN FLOOR



SECOND FLOOR



LOWER LEVEL

SPECIFICATIONS, MATERIALS, AND FLOOR PLANS ARE SUBJECT TO CHANGE WITHOUT NOTICE. E. & O.E. THE DIMENSIONS SHOWN ON THIS PLAN ARE APPROXIMATE ONLY. ALL RENDERING ARE ARTIST'S CONCEPTIONS. ACTUAL USABLE FLOOR SPACE WITHIN THE UNIT MAY VARY FROM ANY STATED FLOOR AREAS OR DIMENSIONS ON THIS PLAN.





LUKE DALINDA

Realtor®

Royal LePage Real Estate Services Ltd., Brokerage

Direct: 416.725.7170

Office: 416.236.1871

ldalinda@dalinda.net

Dalinda.com

For more photos and details go to:

DALINDA.COM

25A ELFORD BOULEVARD



DALINDA TEAM TOP 1% IN CANADA

DAIVA DALINDA, BROKER | VALENTINA MORASKY, SALES REPRESENTATIVE
LUKE DALINDA, SALES REPRESENTATIVE | ALEXA KOSTUK, SALES REPRESENTATIVE
LEIDY MORASKY, SALES REPRESENTATIVE

Written, produced, and presented by Luke Dalinda

The information that has been written herein has been obtained from sources that have been deemed reliable. There has been no reason to doubt its accuracy, but, regrettably, it cannot be guaranteed. Some photos have been taken from other areas. This is not intended to solicit clients that are under contract with a brokerage. All rights reserved. This book, in all or in part, is not to be reproduced, stored, rented, exhibited, distributed, or transmitted in any form without permission that has been written by, and received from, Luke Dalinda. Unauthorized use is prohibited by law. © Luke Dalinda

*Top 1% in Canada, such achievement has been based on the gross, closed commissions that had been collected by the Dalinda Team in 2018, 2019, and 2021 from Royal LePage for teams of 5 or under.

The #1 Top Selling Realtor in Humber Bay Shores (W06, Condos), such achievement has been based on the total combined units and the total selling dollar volume that had been sold from January 1, 2017 to December 31, 2021 from TREB MLS data that had been analyzed by independent third party, RE Stats.*The #1 Top Selling Realtor at Palace Place, such achievement has been based on the number of sales that had been sold from 2010 to 2021 from TREB MLS data.