



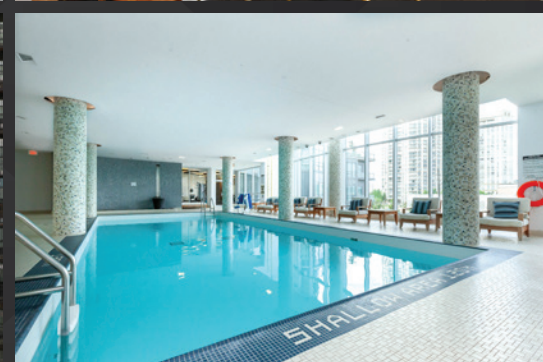
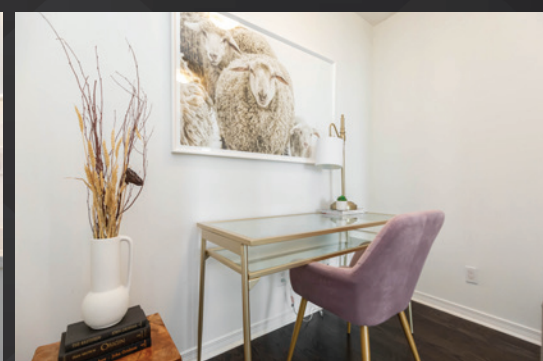
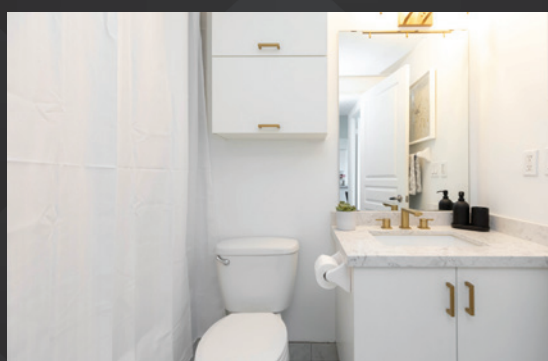
DALINDA.COM

15 LEGION RD #1105

Welcome to sought-after 1 bed + full den, 1 bath suite in the prestigious Beyond the Sea! This open concept, sun filled unit, features floor to ceiling windows, the most breathtaking views of nature, Lake Ontario, and Mimico Creek - all from your sprawling private terrace.

Royal LePage Real Estate Services Ltd., Brokerage





Enjoy an updated chef's kitchen, with quartz counter tops + large breakfast bar, full sized stainless steel appliances, and sleek hardwood floors throughout. Efficient layout allows for a sizeable dining room table, perfect for entertaining. Unit also boasts 9 foot ceilings, a true den, excellent for a work from home office or for an adorable nursery. Minutes from Mimico Go Train Station, commuter highways, St. Joseph's hospital, and the downtown TO Core. Located only steps to the Humber Bay Trail + nature paths/trails, the lake, marina, restaurants, cafes, patios, and shops.



ALEXA KOSTUK
Sales Representative

Royal LePage Real Estate
Services Ltd. Brokerage

Direct: 647.893.1206
Office: 416.236.1871

akostuk@dalindateam.net
Dalinda.com



DALINDA.COM

ROYAL LE PAGE
Royal LePage Real Estate Services Ltd., Brokerage

Disclaimer: Written, produced, and presented by Luke Dalinda. The information that has been written herein has been obtained from sources that have been deemed reliable. There has been no reason to doubt its accuracy, but, regrettably, it cannot be guaranteed. Some photos have been taken from other areas. This is not intended to solicit clients that are under contract with a brokerage. All rights reserved. This book, in all or in part, is not to be reproduced, stored, rented, exhibited, distributed, or transmitted in any form without permission that has been written by, and received from, Luke Dalinda. Unauthorized use is prohibited by law. © Luke Dalinda