

WELCOME TO 1311 GREENEAGLE DRIVE



FOR SALE AT: \$1,575,000 LOT SIZE: 88.4 x 106.85 Feet
ANNUAL ASSOCIATION FEE: \$800 TAXES: \$12,395.18 / 2012



DAIVA DALINDA
Broker



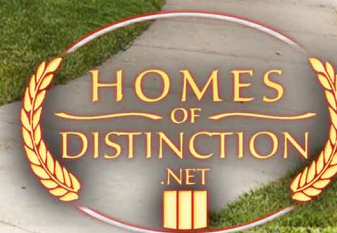
LUKE DALINDA
Sales Representative



Royal LePage Real Estate Services Ltd., Brokerage Tel. (416) 236-1871 Email: ddalinda@dalinda.net

The information that has been written herein has been obtained from sources that have been deemed reliable. There has been no reason to doubt its accuracy, but, regrettably, it cannot be guaranteed. Royal LePage Real Estate Services Ltd., Brokerage. © DalindaTeam.com.

WELCOME TO 1311 GREENEAGLE DRIVE



This home is a breathtaking 3,758 square foot, 4+1-bedroom luxury residence on a cul-de-sac in a gated community that backs onto Glen Abbey Golf Course, with 5th Fairway vistas.



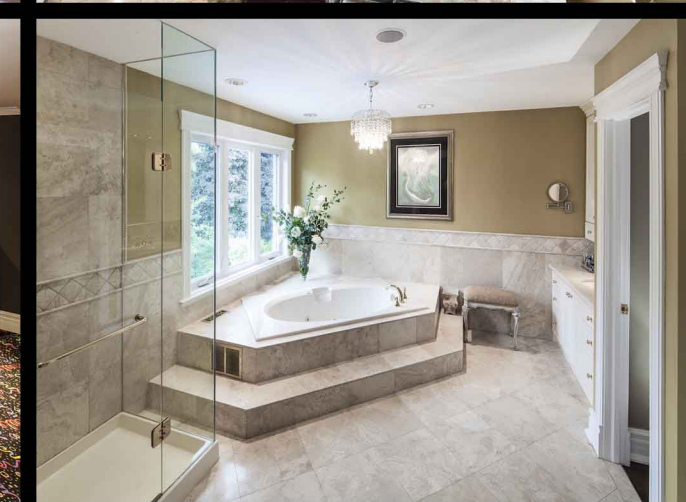
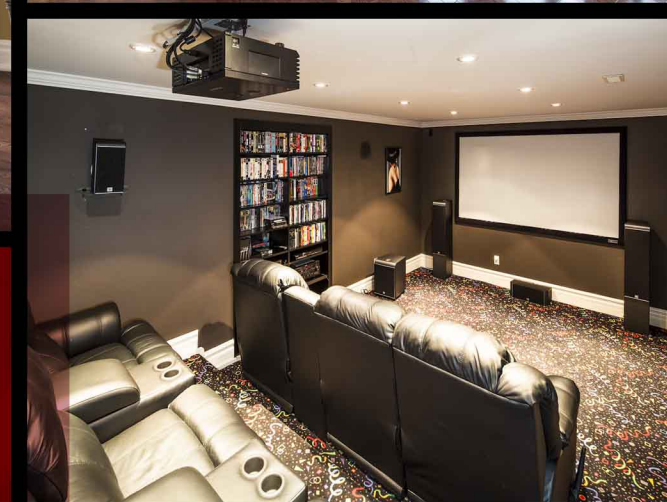
DAIVA DALINDA
Broker



LUKE DALINDA
Sales Representative



Royal LePage Real Estate Services Ltd., Brokerage Tel. (416) 236-1871 Email: ddalinda@dalinda.net



The majestic foyer opens to formal principal rooms and a state of the art kitchen, with granite counters, a center island, with a breakfast bar, and a breakfast room, with a walkout to enchanting, professionally landscaped gardens. This home features elegant woodwork, crown mouldings, and hardwood floors, with limestone floors in the foyer and kitchen. The finished basement features a luxurious home theatre room, wine cellar, and recreation room.

