



[WWW.PALACEPLACE.COM](http://WWW.PALACEPLACE.COM)



PALACE PLACE, SUITE 2302

PRESENTED BY LUKE DALINDA

“WHATEVER MAY BE SAID OF PALACE PLACE,  
YOU MAY SET IT DOWN AS AN UNDERSTATEMENT.

NOT SIMPLY AN ADDRESS, PALACE PLACE IS A  
DESTINATION. PALACE PLACE OFFERS THE KIND OF  
LIVING THAT YOU HAVE NEVER SEEN BEFORE.”



STYLE AND PRIVILEGE ARE WORDS THAT BEST DESCRIBE PALACE PLACE, WHICH IS THE MOST PRESTIGIOUS, LUXURIOUS, AND BEST MANAGED WATERFRONT CONDOMINIUM RESIDENCE IN CANADA.

BORN OF THE IDEALS FROM THE LEGENDARY WATERFRONT ESTATES OF THE GILDED AGE, PALACE PLACE REPRESENTS A CHIC AND SOPHISTICATED VIEW OF CONDOMINIUM LIVING, ONE WITHOUT PRECEDENT IN TORONTO.

HOUSING 504 SUITES, PALACE PLACE SOARS INTO TORONTO'S SKYLINE WITH 47-STOREYS THAT HAVE BEEN ENCLOSED IN A SPECTACULAR GLASS FAÇADE.















SUITE 2302 IS A DRAMATIC, COMPLETELY RENOVATED CONDOMINIUM RESIDENCE, WITH APPROXIMATELY 1,204 SQUARE FEET OF LIVING SPACE AND AN UNOBSTRUCTED VIEW OF THE CITY AND LAKE ONTARIO.











































**Global** – Renovated unit, Neutral paint colours, freshly painted baseboards, granite floors throughout, upgraded appliances, new light fixtures, in-suite alarm, stunning views throughout, quiet, 2 desirable parking spots under building in east garage (P1 east 96, P2 east 184)

### **Kitchen**

All stainless steel appliances:

- built-in Kitchen Aid convection oven/microwave
- glass cooktop stove, w/ hood exhaust
- large Kitchen Aid fridge
- quiet Miele dishwasher
- GE wine fridge

Granite countertops

Custom wood cabinets, soft-close drawers

New Moen kitchen faucet/sprayer, with Premier filtered water tap

Pot lights

Easy-to-clean laminate panel backsplash

Under-cabinet lighting

Hailo built-in waste bins

### **Dining Room**

Custom lighting

Pendant chandelier

(Slate wall-mounted water feature, with lighting can be included)

### **Living room**

Custom lighting feature

(Wall-mounted electric fireplace can be included)

Speaker wires built-in to floor

Horizontal pleated blinds

### **Solarium**

Pot lights

### **Den/2<sup>nd</sup> bedroom**

Pot lights

Double doors

Window to solarium

### **Hallway**

New light fixtures

### **Foyer**

New mirrored closet doors

Large front closet, with custom organizers and interior light

### **Guest bathroom**

Kohler low-flow toilet (1.6 gallon/6 litre)

Kohler Stainless steel bar sink

American Standard faucet

Granite countertop

Laundry

Whirlpool Duet stackable washer/dryer

### **Bedroom**

Custom ceiling lights

New mirrored closet doors

Large closet, with separate walk-in closet – custom closet organizers in both

Vertical blinds

### **Master bath**

Kohler low-flow toilet (1.6 gallon/6 litre)

Kohler sink and new Roman-style Pfister faucet

Separate shower and tub with pot lights and Italian Trend-

VI unique recycled glass mosaic tiles:

- deep Mirolin tub, with lumbar slope and deck-mounted faucets
- glass shower stall and handheld and wall-mounted shower head

Granite countertop

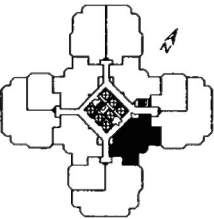
Granite floor

Built-in custom cabinets



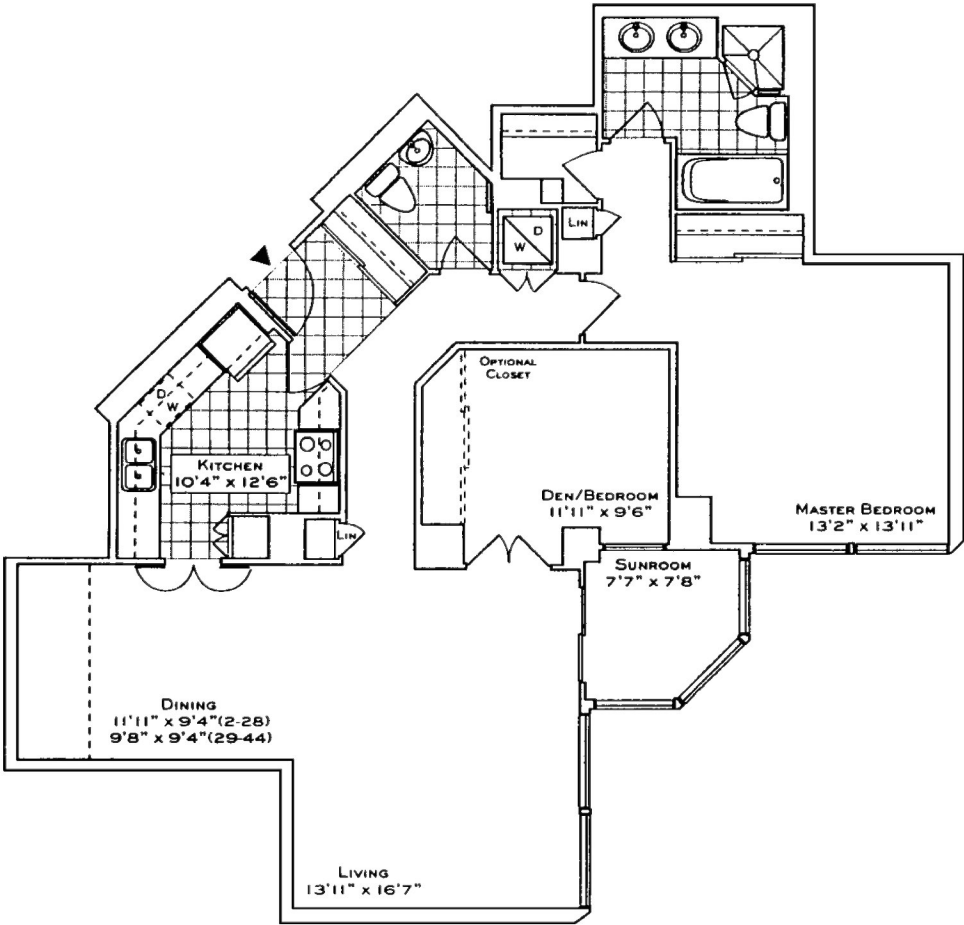
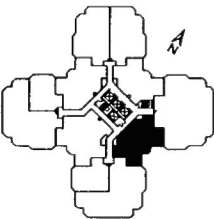
**SUITE 02 - 1204 Sq. Ft.**

(FLOORS 2 THRU 28)



**SUITE 02 - 1186 Sq. Ft.**

(FLOORS 29 THRU 44)







*A modern mix of Oriental and Louis XV inspired  
furnishings and accessories*



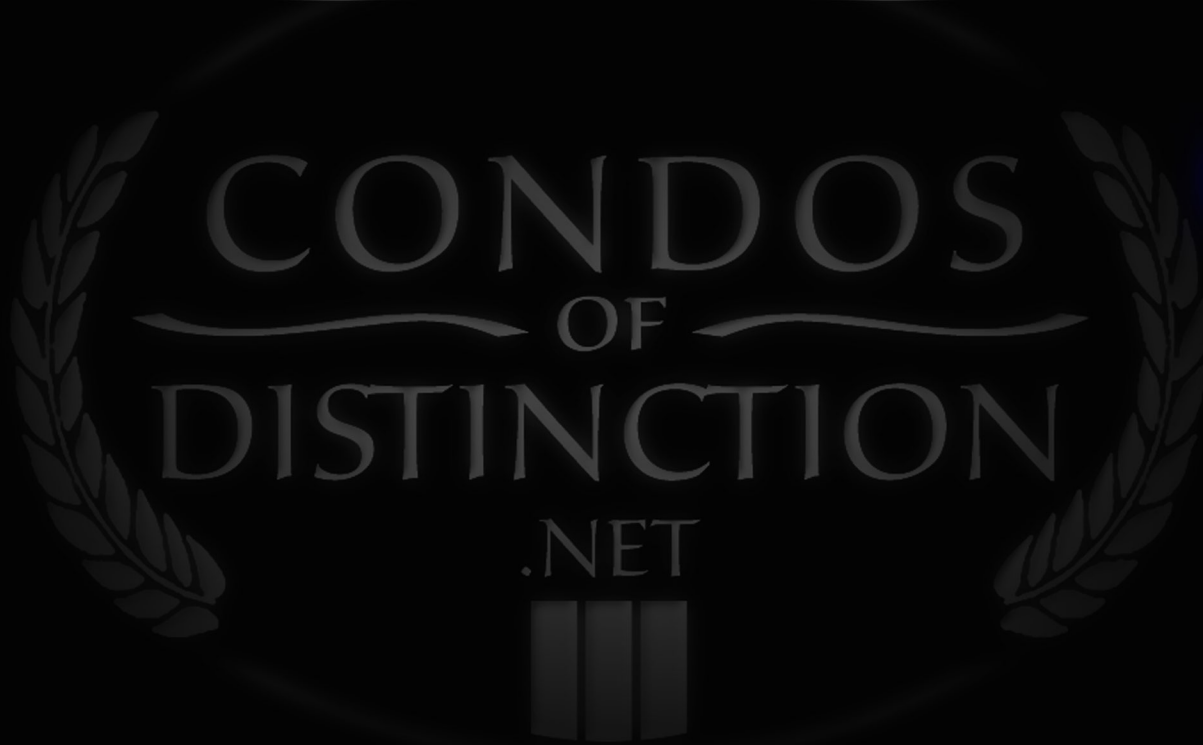
PALACE PLACE FEATURES EVERY CONCEIVABLE AMENITY, INCLUDING VALET PARKING, A SECURITY SYSTEM, WITH A 24-HOUR CONCIERGE, GUARDS, AND VIDEO SURVEILLANCE, SIGNATURE SERVICES, GUEST SUITES, SHUTTLE BUS SERVICE, AND A WORLD-CLASS HEALTH CLUB, WITH BRAND NEW WOMEN'S AND MEN'S SPAS, A SQUASH COURT, A RACQUETBALL COURT, A SAUNA ROOM, AN INDOOR POOL, A RECREATION ROOM, AND A ROOFTOP LOUNGE.



IT IS CONVENIENTLY LOCATED, WITH EASY ACCESS TO MAJOR ARTERIES, PARTICULARLY LAKE SHORE BOULEVARD WEST, THE GARDINER EXPRESSWAY, AND THE QUEEN ELIZABETH WAY. IT IS APPROXIMATELY A 5-MINUTE DRIVE TO DOWNTOWN TORONTO AND 15-MINUTES TO THE AIRPORT.







PALACE PLACE,  
1 PALACE PIER COURT,  
SUITE 2302



Learn more about Palace Place by ordering,  
**PALACE PLACE: THE BOOK**  
[dalinda.net/PalacePlaceBook](http://dalinda.net/PalacePlaceBook)



## EXCEEDING EXPECTATIONS

Luke Dalinda, Sales Representative  
Royal LePage Real Estate Services Ltd., Brokerage  
W: 416 236 1871 C: 416 725 7170  
[LDalinda@Dalinda.net](mailto:LDalinda@Dalinda.net)



WRITTEN, PRODUCED, AND PRESENTED BY LUKE DALINDA.

THE INFORMATION THAT HAS BEEN WRITTEN HEREIN HAS BEEN OBTAINED FROM SOURCES THAT HAVE BEEN DEEMED RELIABLE. THERE HAS BEEN NO REASON TO DOUBT ITS ACCURACY, BUT, REGRETFULLY, IT CANNOT BE GUARANTEED. SOME PHOTOS HAVE BEEN TAKEN FROM OTHER 02 SUITES. THIS IS NOT INTENDED TO SOLICIT CLIENTS THAT ARE UNDER CONTRACT WITH A BROKERAGE. ALL RIGHTS RESERVED. THIS BOOK, IN ALL OR IN PART, IS NOT TO BE REPRODUCED, STORED, RENTED, EXHIBITED, DISTRIBUTED, OR TRANSMITTED IN ANY FORM WITHOUT PERMISSION THAT HAS BEEN WRITTEN BY, AND RECEIVED FROM, LUKE DALINDA. UNAUTHORIZED USE IS PROHIBITED BY LAW. © LUKE DALINDA



