

WELCOME TO PALACE PLACE 1 PALACE PIER COURT SUITE # 3705



Palace Place features a modern mix of Oriental and Louis XV inspired furnishings and accessories.



Pool

Taking as its inspiration the legendary waterfront estates of the Gatsby era, Palace Place represents a chic and sophisticated view of condominium living, one without precedent in Toronto.

PALACE PLACE features every conceivable amenity, including valet parking, a security system, with a 24-hour concierge, guards, and video surveillance, signature services, guest suites, shuttle bus service, and a world-class health club, with a squash court, a racquetball court, a sauna room, an indoor pool, a recreation room, and a rooftop lounge. It is conveniently located, with easy access to major arteries, particularly Lakeshore Boulevard, the Gardiner Expressway, and the Queen Elizabeth Way. It is approximately a 5-minute drive to downtown Toronto and 15-minutes to the airport.



View from 47th floor

FOR SALE AT: \$629,000

MAINTENANCE: \$1,142.15



Learn more about Palace Place by ordering,
PALACE PLACE: THE BOOK
dalinda.net/PalacePlaceBook

SPECIAL FEATURES

- Suite 3705 features stunning wood flooring, granite counters, a granite floor in the kitchen, designer Redwood cabinetry, black slate tile floors in foyer and second bathroom, smooth ceilings, and built-in desk, closet organizers, and speakers. The second bedroom has been opened up, but it can be closed very easily.
- Appliances include fridge, stove, microwave, dishwasher, and washer and dryer.
- One parking spot and one locker are included.



DAIVA DALINDA
Broker



LUKE DALINDA
Sales Representative



Royal LePage Real Estate Services Ltd., Brokerage Tel. (416) 236-1871 Email: ldalinda@dalinda.net

The information that has been written herein has been obtained from sources that have been deemed reliable. There has been no reason to doubt its accuracy, but, regretfully, it cannot be guaranteed. Royal LePage Real Estate Services Ltd., Brokerage. © DalindaTeam.com.

WELCOME TO PALACE PLACE 1 PALACE PIER COURT SUITE # 3705



ON A CLEAR DAY, YOU CAN SEE FOREVER!

Breathtaking is the word that best describes Palace Place, which is the most prestigious, luxurious, and best managed waterfront condominium residence in Canada. Suite 3705 is a magnificent condominium residence, with approximately 1,491 square feet of living space and enchanting views of the lake. Suite 3705 has been completely renovated for the discerning buyer, who appreciates quality workmanship and sophisticated styling.



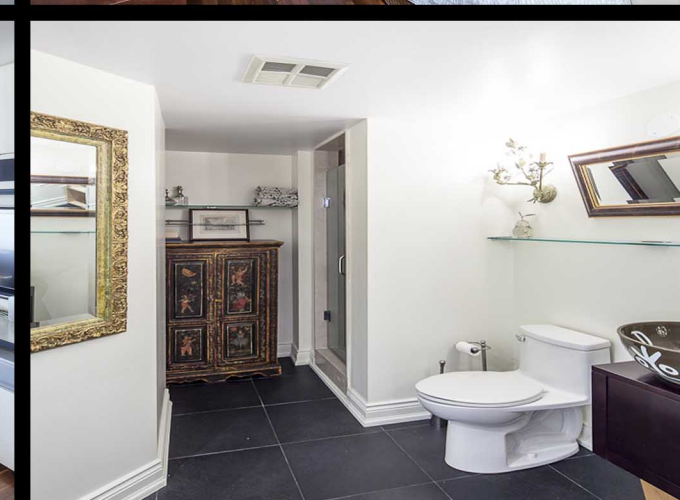
DAIVA DALINDA
Broker



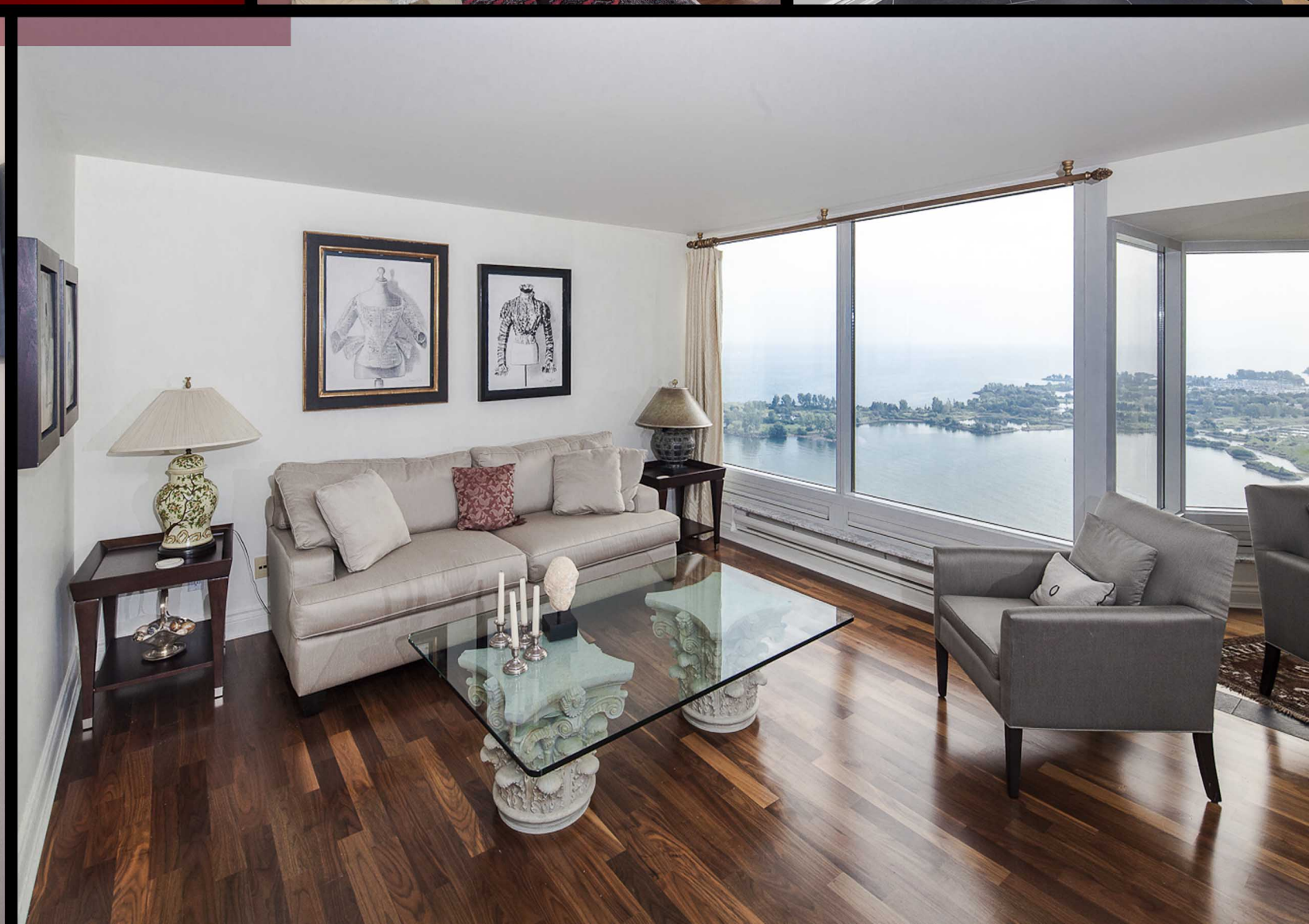
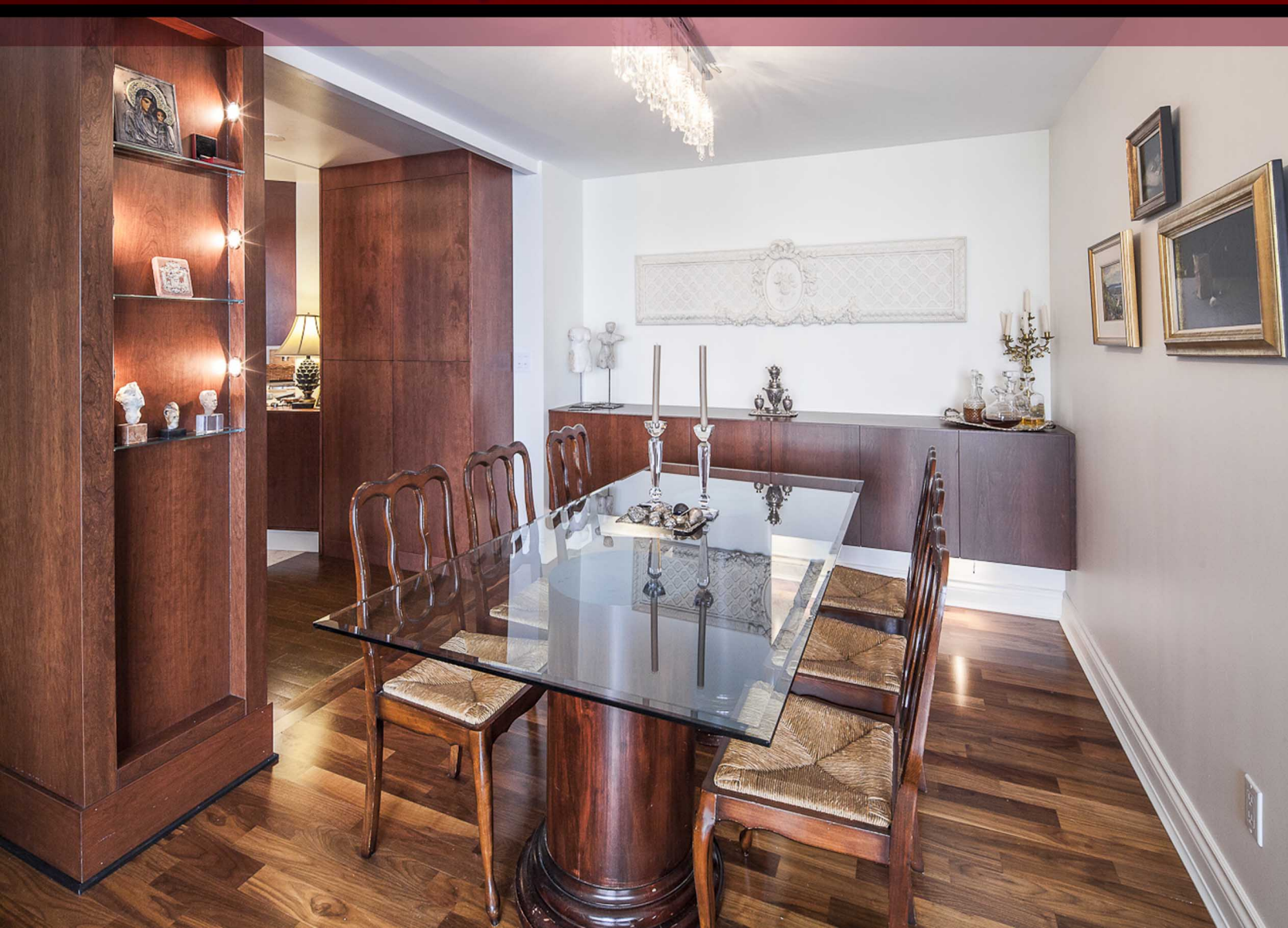
LUKE DALINDA
Sales Representative



Royal LePage Real Estate Services Ltd., Brokerage Tel. (416) 236-1871 Email: ldalinda@dalinda.net



From the moment you step in, you will appreciate the uncompromising attention to detail in every room. Natural light floods the whole unit, which has floor to ceiling windows throughout. This is an ideal home for professional couples, who want the convenient and carefree lifestyle that a luxury condominium offers.



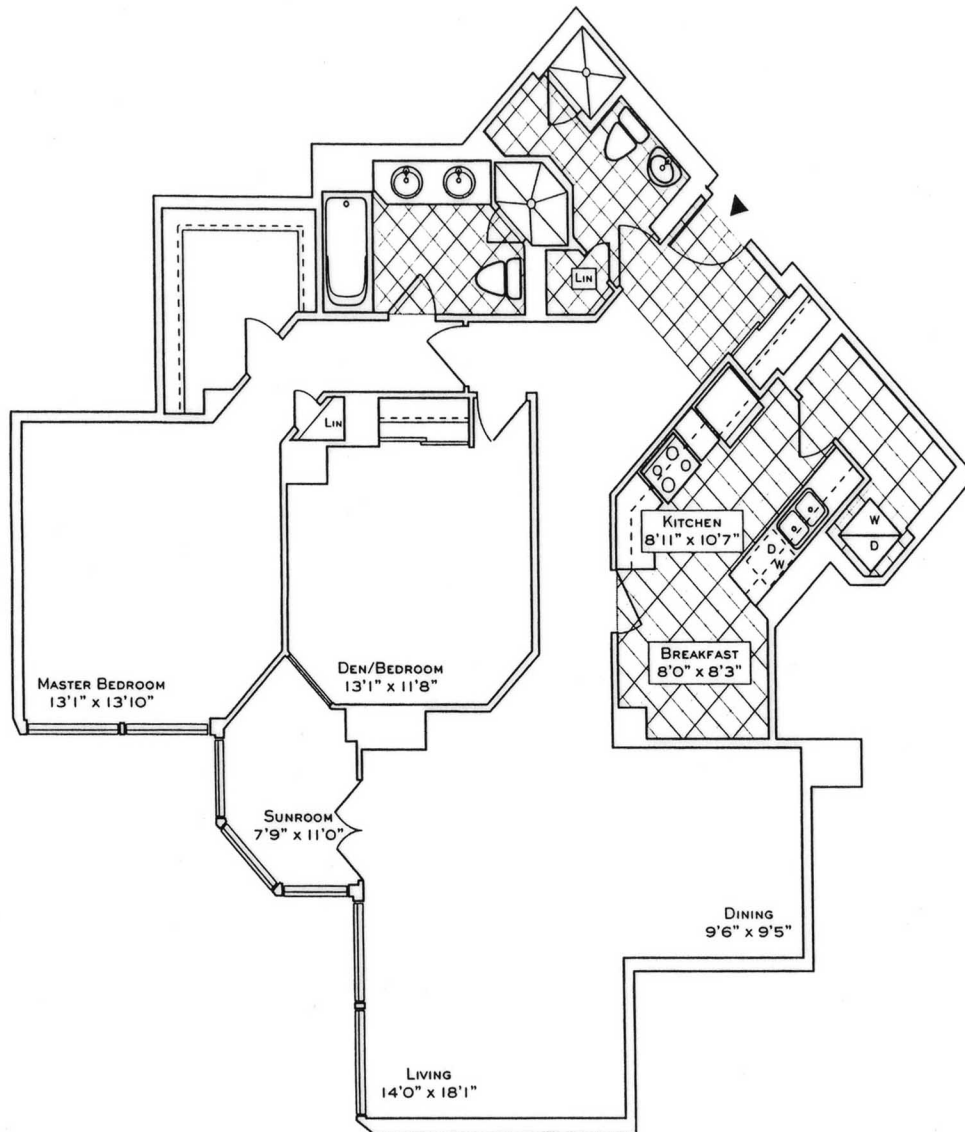
FLOOR PLAN

1 PALACE PIER COURT

SUITE 3705

The
Vista
Point

SUITE 05
1491 SQ. FT.
(FLOORS 29 THRU 44)



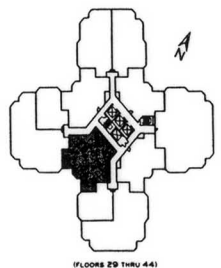
Your new home at Palace Place is about a million miles from the ordinary, offering a symbiotic lifestyle in a landmark building. From valet parking to the unsurpassed service of the concierge who, like the manager of a 5-star hotel, will cater to your every whim.

Play squash, swim, work-out or relax in a soothing whirlpool. The rooftop "Lakeshore Club" offers an exclusive dining room, video theatre, and party facilities with 360° views of the city and lake that are truly breathtaking.

Additionally, there is a private shuttle service to and from downtown, a fully equipped business centre, tuck shop off the lobby and, for overnight visitors, guest suites.

Living at Palace Place, on your private peninsula overlooking Lake Ontario, is an experience that can never, will never, be duplicated. Enjoy.

 PALACE PLACE



(FLOORS 29 THRU 44)

Plans, specifications and dimensions shown are approximate and are for illustrative purposes only and may not coincide with the existing units, as constructed. Floor area may be reduced by increasing the unit or wall or the construction plans represented on this Actual model floor plan may vary from the actual floor area in accordance with OREDA guidelines. Plans shown are not to scale.

ROYAL LePAGE
Royal LePage Real Estate Services Limited, Brokerage

Daiva Dalinda, Broker, and Luke Dalinda, Sales Representative
Royal LePage Real Estate Services Ltd., Brokerage
416 236 1871 ldalinda@Dalinda.net



The information that has been written herein has been obtained from sources that have been deemed reliable. There has been no reason to doubt its accuracy, but, regretfully, it cannot be guaranteed. Royal LePage Real Estate Services Ltd., Brokerage. © DalindaTeam.com.