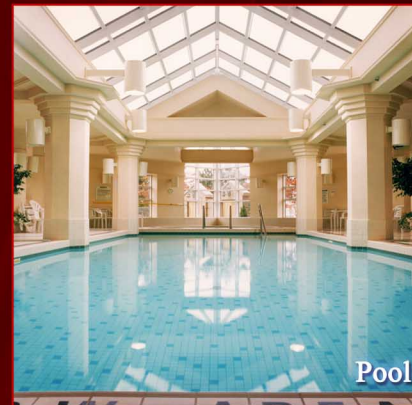


WELCOME TO PALACE PLACE  
**1 PALACE PIER COURT**  
SUITE # 4306



*Palace Place features a modern mix of Oriental and Louis XV inspired furnishings and accessories.*



Pool

*Taking as its inspiration the legendary waterfront estates of the Gatsby era, Palace Place represents a chic and sophisticated view of condominium living, one without precedent in Toronto.*

PALACE PLACE features every conceivable amenity, including valet parking, a security system, with a 24-hour concierge, guards, and video surveillance, signature services, guest suites, shuttle bus service, and a world-class health club, with a squash court, a racquetball court, a sauna room, an indoor pool, a recreation room, and a rooftop lounge. It is conveniently located, with easy access to major arteries, particularly Lakeshore Boulevard, the Gardiner Expressway, and the Queen Elizabeth Way. It is approximately a 5-minute drive to downtown Toronto and 15-minutes to the airport.



View from the 47th floor

**FOR SALE AT: \$957,000**

**MAINTENANCE: \$1,628.27**



Learn more about Palace Place by ordering,  
**PALACE PLACE: THE BOOK**  
[dalinda.net/PalacePlaceBook](http://dalinda.net/PalacePlaceBook)

**SPECIAL FEATURES**

(SEE ENCLOSED INSERT)

- Two parking spots and one locker are included.



**EXCEEDING EXPECTATIONS**

Luke Dalinda, Sales Representative  
Royal LePage Real Estate Services Ltd., Brokerage  
W: 416 236 1871 C: 416 725 7170  
[ldalinda@Dalinda.net](mailto:ldalinda@Dalinda.net)



The information that has been written herein has been obtained from sources that have been deemed reliable. There has been no reason to doubt its accuracy, but, regretfully, it cannot be guaranteed. Royal LePage Real Estate Services Ltd., Brokerage. © DalindaTeam.com.

WELCOME TO PALACE PLACE  
**1 PALACE PIER COURT**  
SUITE # 4306



Breathtaking is the word that best describes Palace Place, which is the most prestigious, luxurious, and best managed waterfront condominium residence in Canada. Suite 4306 is a spectacular condominium residence, with approximately 2,028 square feet of living space and enchanting views of the lake. Suite 4306 has been completely renovated for the discerning buyer, who appreciates quality workmanship and sophisticated styling.



**EXCEEDING EXPECTATIONS**

Luke Dalinda, Sales Representative  
Royal LePage Real Estate Services Ltd., Brokerage  
W: 416 236 1871 C: 416 725 7170  
[ldalinda@Dalinda.net](mailto:ldalinda@Dalinda.net)







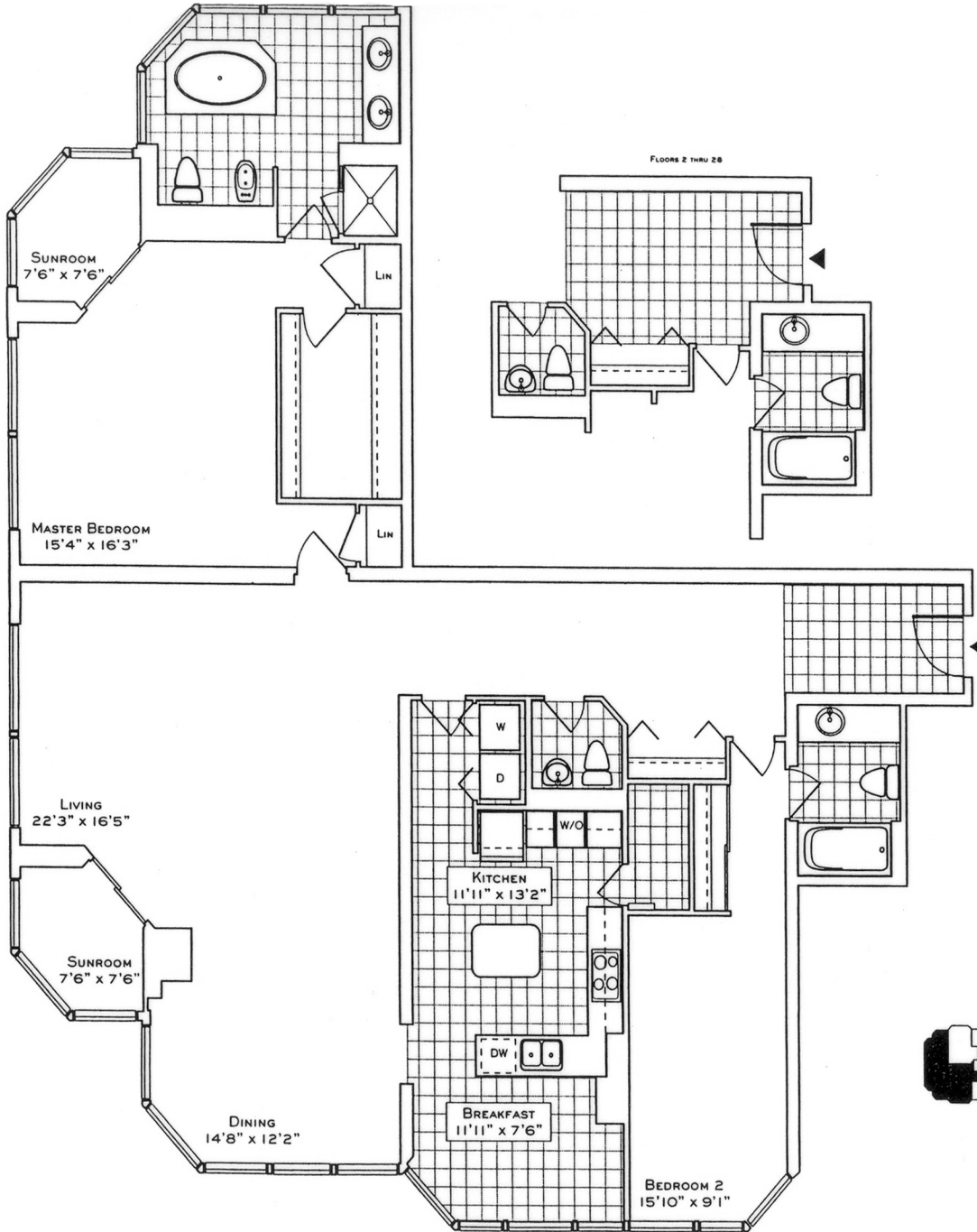
**F**rom the moment you step in, you will appreciate the uncompromising attention to detail in every room. Natural light floods the whole unit, which has floor to ceiling windows throughout. This is an ideal home for professional couples, who want the convenient and carefree lifestyle that a luxury condominium offers.





# FLOOR PLAN

# 1 PALACE PIER COURT SUITE 4306



## The Water Point

**SUITE 06**  
1985/2028 SQ. FT.  
(FLOORS 2 THRU 28/29 THRU 44)  
**SUITE 01**  
(REVERSE PLAN)  
1985 SQ. FT.  
(FLOORS 2 THRU 28)

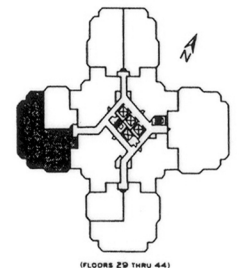
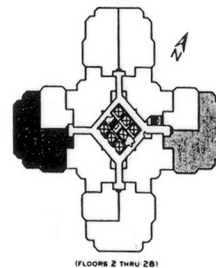
Your new home at Palace Place is about a million miles from the ordinary, offering a symbiotic lifestyle in a landmark building. From valet parking to the unsurpassed service of the concierge who, like the manager of a 5-star hotel, will cater to your every whim.

Play squash, swim, work-out or relax in a soothing whirlpool. The rooftop 'Lakeshore Club' offers an exclusive dining room, video theatre, and party facilities with 360° views of the city and lake that are truly breathtaking.

Additionally, there is a private shuttle service to and from downtown, a fully equipped business centre, tuck shop off the lobby and, for overnight visitors, guest suites.

Living at Palace Place, on your private peninsula overlooking Lake Ontario is an experience that can never, will never, be duplicated. Enjoy.

 **PALACE PLACE**



Plans, specifications and dimensions shown are approximations and are for illustrative purposes only and may not coincide with the existing site, or conditions. Plans are subject to change without notice. The actual floor area may vary from the stated floor area in accordance with OHSFP guidelines. Plans shown are not to scale.

**ROYAL LePAGE**  
Royal LePage Real Estate Services Limited, Brokerage

Luke Dalinda, Sales Representative  
Royal LePage Real Estate Services Ltd., Brokerage  
416 236 1871 lldalinda@Dalinda.net



The information that has been written herein has been obtained from sources that have been deemed reliable. There has been no reason to doubt its accuracy, but, regretfully, it cannot be guaranteed. Royal LePage Real Estate Services Ltd., Brokerage. © DalindaTeam.com.

# SPECIAL FEATURES

# 1 PALACE PIER COURT

## SUITE 4306

- Travertine crema marble floor in entrance.
- Mirage engineered 5-inch plank maple floors throughout.
  - Smooth ceilings throughout.
- Coffering installed, with classic crown mouldings on inner edge, containing three circuits of 12 Volt pot lights, each with independent transformers and each circuit on independent dimmers.

### Second Bathroom

- Porcelain fully tiled 60" x 32" cultured marble shower base.
  - Fleurco shower doors.
- Hansgrohe raindance chrome thermostatic shower and hand held.
  - Aquabrax three piece faucet in chrome.
  - 24" x 12" porcelain tiled floor.
- Toto one-piece Supreme toilet (eco-approved, with 6L flush)
  - Low voltage lights fitted to vanity units above shower.

### Guest Washroom

- Custom mirrored, with Benjamin vanity and sink, with Aquabrax Volare single faucet.
  - 12 Volt pot lights, each with independent transformers.
- Toto once-piece Supreme toilet (eco-approved, with 6 L flush)
  - Carrara white marble floor

### Kitchen

- Multi custom designed and installed kitchen and pantry.
- Kashmir white granite countertops, with 24" X 12" porcelain tiled floor.
- Miele Dishwasher, Miele Vent Hood, Miele Ceramic Induction Cooktop, Miele Speed Oven, Miele Convection Oven, and Kitchen-Aid fridge.
  - Hansgrohe brushed nickel High Arc faucet.
  - New Form X-Art brushed nickel water filter faucet.
- Villeroy & Boch fired vitreous enamel one and a half sink.
  - LED Countertop and 12 Volt ceiling and track lights.

### Master Bath

- Avanti design by Vanico
- Fitted bathroom cupboards
- Two Aquabrax frosted glass basins, with pop-up drainer.
  - Two Rubi designed brushed nickel single faucets.
  - Black granite countertop.
- Opulence shower doors to fully tied Carrara white marble shower cubicle, with Hansgrohe Raindance thermostatic shower in brushed nickel.
  - Toto one-piece Supreme toilet (eco-approved with 6L flush)
  - Toto one-piece bidet, with Aquabrax bidet faucet set in brushed nickel.
- Stand alone Odesign Island Bath, with brushed nickel LoveMe tower faucet.
  - Ico 19.5" x 47.5" wall mounted heated tower rail, with built-in timer.
  - Black granite walls, with marble and brushed nickel contrast lines.
  - Custom mirrors.

### Exclusions

- Book shelving in hallway entrance (not attached to walls).



Luke Dalinda, Sales Representative  
Royal LePage Real Estate Services Ltd., Brokerage  
416 236 1871 [ldalinda@Dalinda.net](mailto:ldalinda@Dalinda.net)

